

Whittle Bits and Pieces

Mid-Wisconsin Chippers Newsletter for January 2022

Website: <http://midwisconsinchippers.weebly.com/>

Club President : Tim Gosz
Vice-President: Duane Foote
Treasurer: Bill Tuchscherer
Secretary: Cedric Richeson
Annual Show Director: Paul Wolters



*The Chippers Club logo:
"The carver on the stool"
was created by Bob Yancey
MWC Club President
from 1984 - 1985.*



Welcome to New Members!
**Doug Volz, Andrew Marker, Joseph Longo,
Harold Mohr, Richard Young & Virginia Temme!**

**Jeff Brier Presentation
Carving Canes & Walking Sticks**

Join us at the First meeting of 2022:

Sunday, January 2nd!

Gloria Dei Lutheran Church
1140 Tullar Road
Neenah, Wisconsin

Board meeting: 12:30 p.m. General Meeting: 1:30 p.m. Library Open.
Bring your carvings & pyrography for Show 'N Tell!

Mid-Wisconsin Chippers
Woodcarving Club (MWC) Board

- Barb Behm
- Lee Belanger
- Gene Bengel
- Steve Binder
- Dick Krummick
- Rodney Manthey
- Chris Rigotti
- plus the Officers

*Membership Fee is past due -
\$20*

*Membership & mailing list
will be updated after Sunday's
meeting.*

Current paid membership 65.

*Over 50 carvers have signed up for
our 2022 Show. Don't miss out.
Register now!*

Club Webmasters:
Josie Hartzke
Jackie Silva

Club Librarian:
John Goheen

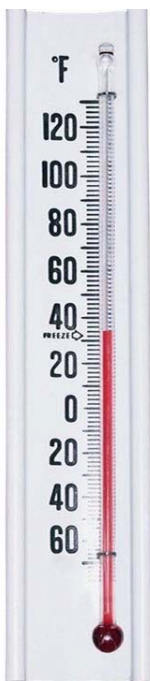


Table of Contents

Meeting Schedule, Location, Membership News.....	Page 2
Featured Carver Don Weyenberg - an Interview by Paul Wolters.....	Page 3
December Club Report.....	Page 4
Show 'N Tell from December Meeting.....	Page 5-6
Betsy Popp Ram Presentation.....	Page 7
2022 Chippers Show featured speaker Frank Ujzdowski.....	Page 8
Gene Bengel Carving Classes.....	Page 9
Richeson & Krummick Pyrography Classes.....	Pages 10-11
Roadtrip Woodcarving Retreats, Workshops & Seminars.....	Page 12
Places to Go Carving in Mid-Wisconsin	Page 13
Annual Woodcarving Shows List (Updated).....	Page 14
A Few Mores Photographs.....	Page 15
Betsy Popp Ram Class Registration Form.....	Page 16
2022 Chippers Show Table Registration Form.....	Pages 17-18

Regular Club Meetings

The Mid. Wis. Chippers Club meets at Gloria Dei Lutheran Church, 1140 Tullar Road, Neenah, Wis. (by Neenah High School) on the first Sunday of each month (except as noted.)

Meetings are at 1:30 p.m. (except our December potluck with a noon setup & lunch at 1:00 p.m.)

Board meetings are at 12:30 p.m. (No Board meeting in December.)

Presentations, demonstrations, activities & events: If you want a particular demonstration, tour, class or teacher, or have another idea, jot a note or send an e-mail to a Board member or Officer.

2021-2022 Meeting Schedule:

- ✓ August 22 *Show 'n Tell (or "How I spent my summer vacation")*
- ✓ October 3 *Show 'N Tell Bring those ribbon winners and more!*
- ✓ November 7 *Ducks vs Decoys - Jerry Lindow*
- ✓ December 5 *Christmas & Holiday Potluck*
- January 2 **1:30 p.m. Canes & Walking Stick Carving - Jeff Breier**
- February 6 1:30 p.m. *How We Got Started in Woodcarving - a Panel Discussion by Longtime Master Carvers*
- March 6 1:30 p.m. *All About Eyes Carving Demonstration - Gene Bengel, Friendship Cane Block Turn In*
- April 3 Annual Show Preview, Judging Entries "How-To", Completed Friendship Canes, Elections
- May 8 1:30 p.m. Show Review

Membership- Our Club has over **65** members including **12** new members in 2021.

Our club identity is the **Mid-Wisconsin** Chippers; our club members come from Appleton, Berlin, Brookfield, Brown Deer, DePere, Eldorado, Fond Du Lac, Fox Crossing, Green Bay, Greenleaf, Hortonville, Kaukauna, Kimberley, Larson, Menasha, Milton, Neenah, New London, Oshkosh, Ripon, Stevens Point, Townsend, Winneconne, and Wisconsin Rapids.

New members learn about our club from our participation in carving shows & events, our website, carving classes, area Senior Centers and carving groups, **and most importantly by personal contact with other club members whose enthusiasm for woodcarving is contagious.**

Through many paths, people find their way to join with us and invigorate our Mid-Wis. Chippers club with their ideas and talents. Please be an ambassador to help someone else join today.

Donald Weyenberg 93 & Chipping Away

Don & Betty Weyenberg, what a beautiful couple who have been so active in their 68 years of marriage. Betty passed in August of 2021. Don continues to be involved with his church (Mt. Calvary Lutheran Church, Menasha), their 5 children, 14 grandchildren, 22 great grandchildren, and the Mid-Wis. Chippers.



Don joined the Mid Wi Chippers in October of 1985 after his retirement of 42 years as a millwright with Kimberly Clark Corp. in Kimberly.

Upon his retirement Don took various wood carving classes, first with Bill Stark carving a duck at the Bubolz Nature Center, Appleton. In 1985, Don joined the Mid-Wis. Chippers and was soon elected to the board of directors for 5 years. He also judged carvings during competition at shows. Betty was the Asst. Secretary of the club. Betty, a good friend of Lu McCutcheon (wife of Stu McCutcheon, secretary of the club), took over kitchen duties for Lu when Lu became ill. Don and Betty were very involved with the wood carving shows they attended and so proud of Don's ribbons he was awarded.

A carver who influenced and encouraged Don in wood carving was Dave Oestrum from the Oshkosh area. Don also took classes with Lyle Kraus at the Senior Center in Oshkosh, plus classes in Winneconne with Ray Pokrandt. As a snowbird, another person who influenced his carving was Pete Blansit from the Rio Grande Valley Woodcarvers Club in Texas. Don carved a violin and other items during the winter months there. Before the pandemic, Don would attend open carving at the Thompson Center in Appleton. Over the years Don has carved various items and has given them to friends and family. As you can see, Don's hutch, to the right, is packed with many of his carvings. Each carving telling a story of family, seasons, classes and places they have been over the years. Believe me, he has everything at his disposal; lights, drills, vacuum, paints and a comfortable chair, maybe even a snooze might be in order!!



Six years ago, Don's involvement with the American Legion gave him the privilege of taking the "Military Honor Flight" to Washington DC from Green Bay to view all of the national monuments. Don was honored 3 years ago by receiving a "Certificate of Continuous Membership" in the American Legion for 60 years. What a honor and dedication to his country!

Thank you for Renewing Your Mid-Wis. Chippers Membership!

Dues support our Club Expenses for Classroom Rental, Library Additions, Coffee & Snacks, Trailer Storage, Show Expenses, Friendship Cane Blocks, Class Scholarships,, Meeting Place, & More.

December Club Report

No Board meeting. Our newest Club member Doug Volz was in attendance with his wife Sue (5 more have joined since the December meeting).

Paul Wolters opened our potluck with a prayer on December 5th with 31 people in attendance. The kitchen was utilized to set up the food. The potluck had a wonderful variety of food. The club provided turkey and ham, rolls, napkins, plates, coffee, disposable utensils, hand sanitizer & disposable gloves. There was German potato salad, beans, bacon wrapped chestnuts, brownies, pasta salad, stuffed dates, spicy mixed nuts & pretzels, olives, cheese, cookies, cake, chips, dips, and so much more. See elsewhere for photos and more.

A table displayed Friendship blocks for pick up as well as a completed Friendship Cane for the Potluck raffle. Tim Gosz volunteered to run the raffle. The Friendship Cane raised \$76. The lucky winner was Donna Johnson's husband Cedric. See photos section for the cane and winner.

Show 'N Tell only had one item to show, but it was a wowser. Bill Tuchscherer's Marilyn Monroe.

A sign up sheet for four potential 2022 carving classes was available to determine interest. There appears to be sufficient interest to go forward with all four classes. The Josh Guge class will be scheduled for next summer. Dates for Jan Jensen Chip Carving & Denny Neubauer Sharpening will be forthcoming. The Betsy Popp class is scheduled for April. Betsy showed her carved ram at the potluck. See page 7 for details.

A reminder: the club approved a cancellation policy for the club's spring show. A full refund will be made of table registration fees for the spring show if requested prior to March 1st.

The Mid-Wis-Chippers Club website has current information, forms, articles, and photographs from club events and meetings. Go to: <https://midwisconsinchippers.weebly.com>

Want to Take Carving Classes Online? Check out:

<https://woodcarvingacademy.com>

Show 'N Tell & Potluck Photos - December 5th Meeting

Bill Tuchscherer saved us from being skunked at Show 'N Tell. Bill brought Marilyn Monroe to the potluck. Miss Monroe was looking pretty good for a 95 year old.



Rodney Manthey (left) scopes out the prospective carving classes, December Newsletter, and Friendship cane blocks. Lower left, a raffling we will go! Mr. & Mrs. Gosz set up the Friendship Cane raffle which helped out the club treasury. Several folks helped with the crockpots, warmers, and buffet line. Disposable gloves, and hand sanitizer were used. Santa brought elf-sized gloves, but we managed to dish up the delicious smorgasbord of glorious salads, meats, appetizers, entrees and desserts. The club (Thank you dues!) provided ham & turkey, rolls and coffee. Chef Paul prepared the turkey.



Potluck Photos - December 5th Meeting



A Happy Christmas & Merry New Year! Reflecting on 2021 we say "so long" greeting 2022 with high hopes.



Betsy Popp Ram Carving Class Presentation



Betsy is a born story teller and that means she is a born teacher. She relates her process from conception to completion and includes the problems and obstacles that naturally occur as well as how she addresses them. The results of her talent and artistry are evident in her carvings, but it is hard to convey her ability as a teacher to one who has not taken one of her classes.

The Mid-Wis. Chippers has the pleasure of offering a Betsy Popp carving class of a Bighorn Sheep Ram in butternut. The class will be held in Neenah at St. Mark's Evangelical Lutheran Church, 140 S. Green Bay Road. The class will be held in a windowed long room which is easily accessible on the first floor.

The first three days will be Thursday, Friday, Saturday, April 7th, 8th, and 9th. Class will resume the week after Easter on April 21, 22, 23, Th, Fr, Sat. Doors will open at 8 am and class will go to 5 pm with time off for lunch.

Member cost will be \$125 plus a material fee of \$55. The materials fee includes one butternut wood ram cutout, eyes, full pattern packet with reference photos, paint & sealer. The fee does not include the material for the base which is to be provided by the student, however, a base example will be present and an explanation given of how it was made. Students wishing to purchase a second cutout should contact Betsy no later than April 1st. betsypopp@gmail.com

The maximum number of students will be 12.

There will be no cast provided. There will be two Betsy ram carvings for examples.

This will be a more advanced class, but Betsy will work with students of any level.

Power carving is advised; students will need to provide their own dust collector.

Students carving *solely* with hand tools may find it hard to keep up.

Students should bring their regular tools, bits, woodburner, paint brushes, Quick Wood or 5 minute epoxy.

Class Registration form is attached; return with \$125 class fee to reserve your spot. (Non-members \$140)

Material fee due to instructor on first day of class.

Betsy Popp is a widely recognized and award-winning artist. She is a UW-Stevens Point graduate with an Art Education degree & a Masters of Fine Arts degree from the Academy of Art University, San Francisco, CA, she owns and operates "Betsy Popp - Fine Art Gallery" in Townsend, WI.

For nearly 20 years, Betsy has instructed adult studio art courses. She has taught art and been artist in residence throughout the country including Northeast Wisconsin Technical College, Green Bay, Nicolet College, Rhinelander, WI, and Upper Iowa University. Her work embraces being "Artist in Residence" in National Parks across the country, including Grand Canyon, AZ, the Everglades, FL, Acadia, ME, the Badlands, SD, Pictured Rocks National Lakeshore and Porcupine Mountain Wilderness Area. Betsy's work is in the collection of these National Parks and other private collections both nationally and internationally.

REGISTER NOW!

2022 MID-WISCONSIN CHIPPERS WOODCARVING SHOW, SALE & COMPETITION

Our Judges are lined up for the woodcarving competition with over two dozen categories. Carvings will be judged against submissions over five skill classes: Masters; Open; Intermediate; Novice; and Youth. Over 50 carvers have registered so far for our 2022 spring show. The Waupaca Woodcarving Club will be there. The Oshkosh Senior Center will be providing information on their woodshop & classes. A fantastic raffle will including Friendship canes, woodcarving books, decorative ceramics, prints, carvings & more. There will be a Pyrography demonstration by Master pyrographer William Tuchscher. The Mid-Wis. Chippers Woodcarving Club will give a "How to Get Started in Woodcarving Presentation" with a power carving demonstration. On site tool sharpening by Denny Neubauer (for a small fee).

On May 1, 2022, the 46th Annual Mid-Wisconsin Chippers Show, Competition & Sale will be held at The Oshkosh Convention Center in downtown Oshkosh, Wisconsin. Located between the Fox River and Ceape Avenue at 2 North Main Street, Oshkosh, Wisconsin, The Oshkosh Convention Center is connected to The Best Western Premier Waterfront Hotel by an elevated pedestrian bridge that crosses Main Street. The Best Western offers a special rate of \$109.99 for Show attendees. The Ground Round Restaurant is located on the street level of the hotel adjacent the river. A food concession with seating will be available on the Convention concourse (just outside our exhibition area) during our event. Register now to guarantee your place in this great 2022 show.

The show theme is: "Everything you need to get started & grow in Woodcarving." Find out about carving classes, woodcarving events, and get equipped by vendors for tools, knives, chisels, gouges, thumb guards, woodburners, wood for various styles of carving and pyrography. Learn from books, clubs, interesting presentations and educational demonstrations. Make our show an enthusiasm dynamo for wood carving generating new carvers partaking in the many woodcarving opportunities in mid-Wisconsin. Learn places to go carve with others.

Woodcarvers, pyrographers, a great judged competition for the best woodcarvings, carved art for sale, chainsaw carver, food concession, and the always popular bucket raffle with carvings and a host of interesting, new and handmade items. We are planning a great fun show for our audience, the carvers, and vendors who make it all happen! We hope to see you in 2022!

Falconer Frank Ujzdowski Featuring a Live Falcon

Bird carvers rejoice!

A Falconry Presentation by Frank Ujzdowski will be featured at our 2022 show.

The presentation will include many facts about the Sport of Kings, Falconing in Wisconsin, and will also feature a live bird.

Frank is a licensed falconer and the Northern Director and Apprentice Coordinator for the Wisconsin Falconry Association.

A friend of Snowy Owls, Frank has also been instrumental in leading a group of falconers who have saved Snowy Owls from destruction as hazards to aviation. These volunteer falconers in cooperation with airport authorities have safely captured and relocated snowy owls far away from area airports. Pilots, crew, passengers, and owls are all safer due to Frank and his fellow volunteers.



Woodcarving & Woodburning Classes

Carving & Pyrography Classes held at the Oshkosh Senior Center (OSC)

200 North Campbell Road, Oshkosh, WI tel: (920) 232-5311

Woodcarving is in the ~~North~~ South Building Woodshop; Pyrography in the South Building.

Gene Bengel Handtool Woodcarving Class - Unfinished Projects



This 5 day carving class is open to anyone who would like to work on completing their carving projects. Master Carver Gene Bengel is available to assist with your project.

This class will be held in the South Building; masks required. No power carving.

Mondays, January 3-31 (5 Mondays) from 1:00 p.m. to 3:00 p.m.

Cost: \$25 Oshkosh Resident / \$30 Nonresident

Register by December 30th.

Gene Bengel Beginner Carving - Sea Turtle

Check the Oshkosh Senior Center **February** Newsletter (comes out in late January)

for costs and registration information & watch for our Club February newsletter too!

A sea turtle in basswood. Use a knife or palm tools.

Gene will guide you step by step. Basswood included; paints not included.

See the December OSC newsletter & Whittle Bits 'n Pieces for details.

Mondays, in February from 1:00 p.m. to 3:00 p.m.

The class size will be a minimum of 5.

Cost \$Cheap for residents and \$A bit more for non-residents.

Watch for registration information in the February OSC newsletter and Whittle Bits 'n Pieces.



*Will
I ever see
you?*

*Pyrography Classes held at the Oshkosh Senior Center (OSC)
200 North Campbell Road, Oshkosh, WI tel: (920) 232-5311
Pyrography in the South Building.*

Richeson & Krummick Woodburning Class Beginning Pyrography

**Tuesdays 1-3 pm, January 4th - February 1st (5 Sessions)
Woodburning Bootcamp - All materials & equipment available.**



This class covers fundamentals of woodburning with a lot of practice & hands on experience.

Learn about temperature control, burn contact time, layering, & various techniques including stippling & hatching using practice boards. Types of wood & other materials to burn.

Students will burn a postage stamp image they select from many available patterns on basswood and also burn a flying mallard on birch plywood.

Books & Other Resources will be discussed. Where to obtain wood, tools & supplies.

Students from last fall's class made these postage stamp burnings.

Course covers:

- Safety
- Woodburner Types & Use
- Nib/Tip Types & Usage
- Types of Wood & Media
- Pattern Transfer Methods
- Hatching & Crosshatching
- Stippling
- Shading & adding color
- Fixing Mistakes
- & much more.



We recommend that you **not** buy a woodburner before the first class.

Equipment types, selection, brands & pros and cons will be discussed.

The Oshkosh Senior Center has Colwood wire nib burners that you may *reserve when you sign up*. If you have your own burner, bring it.

Woodburning Basics Class: Tuesdays January 4 - February 1, 2022 (5 day class - 10 hours total)
Class size will be a minimum of 3; maximum of 12.

Cost: Tuesday Class - \$12 Oshkosh Resident / \$14.50 Nonresident; includes all materials.
Registration open; closes when full or December 30, 2021.

No experience needed. *This Beginner Basics Class has ten (10) hours of instruction and hands on practice. Take it to learn pyrography for the first time, or use it as a refresher course.*

*Pyrography Classes held at the Oshkosh Senior Center (OSC)
200 North Campbell Road, Oshkosh, WI tel: (920) 232-5311
Pyrography in the South Building.*

Richeson & Krummick Woodburning Class - 4 Thursdays, 1-3 pm, January 6-27 - Aw Nuts!

"Aw Nuts!" develops skills burning various textures: nuts, metal, cloth, plastic, and a reflection in this challenging project designed to enhance your pyrographic technique toolbox.

Class includes pattern and an 8" x 10" birch plywood plaque. Students will bring their Woodburner and four nibs: a shader, round heeled skew, medium and small writer nibs, dust mask, tack cloth, graphite paper, a white vinyl eraser, a red or blue ink pen.



Thursdays, January 6-27, 2022 from 1:00 a.m. to 3:00 p.m.

The class size will be a minimum of 3; maximum of 12.

Cost - \$25 Oshkosh Resident / \$30 Nonresident. Registration open; closes when full or January 4th.

Beginner/Intermediate Level. Prerequisite: Beginner Pyrography or permission of instructor.

Upcoming Richeson & Krummick Woodburning Classes



**4 Tuesdays February 8 -
March 5, 1-3 pm**

Woodburning Decorative Plaques

Class size will be a minimum of 3; maximum of 12.

Cost: TBD



**8 Thursdays February 3 -
March 24, 1-3 pm**

Saw-Whet Owl 16" Scalloped Beaded Rim Platter

Class size will be a minimum of 3; maximum of 10.

Cost: \$40 Plus material fee of ~\$28

Registration for both classes will open in late January; look for OSC Current Newsletter .

Roadtrip Woodcarving Retreats, Workshops & Seminars

Carving at the Vesterheim Museum - Decorah, Iowa

Online - Intro to Kolrosing

Wednesdays February 2 & 9 (6:00-8:00 pm CT) with Chelsea Bowen

Online - Figure Carving Inspired by Norwegian Tapestries

Wednesdays March 2, 9, & 16 (6:00-7:30 pm CT) with James Miller

Class Tuition ranges from: \$120-285 Members; \$135-335 Non-members, plus material fees.

For more information go to: <https://folkartschool.vesterheim.org/class>

The Clearing Folk Art School 12171 Garrett Bay Road, Ellison Bay WI 54210

Week Long Residential Classes on a 128 acre campus in western Door County.

Class Cost: \$625 - \$1,325 (\$625 is commuter; higher prices include meals & lodging)

Winter Class Schedule will be available around Thanksgiving week.

22nd Annual Snow Daze Carve In

American Legion Post 398, 2333 Wilshire Boulevard, Mound, MN 55364

Sponsored by Central Minnesota Woodcarver's Association (MNWA) of St. Cloud, MN

March 26 & 27, 2022 8-5 Saturday & 8-5 Sunday Cost: \$100 includes lunch + Class fee

Must be a member of MNWA (\$7.50 to join) These are two day classes.

A. Intanglio Snowy Owl - Mary Kimball (\$30) All levels

B. Bull Moose - Don Fischer (\$35) Intermediate

C. Human Face Figure - Mark Lind (\$30-50) All levels

D. Pyrography - Brenda Lodermeier (\$35) Beginner - Advanced

E. Chip Carving - Bill Ness (\$25-30) Beginner - Advanced

F. Quilting/Fiber Arts - Marion Fischer (\$none) - no project - bring your own

G. Carve/Paint Barn Owl or Pine Tree & Rocks - Ken Ramler (\$25) All levels

H. Climbing Black Bear on Stump - Bob Lawrence (\$30 + \$15 for blanks) Exp. Beginner to Advanced

I. Homie Gnome - Bruce Ankeny (\$40) Intermediate

Registration was due by December 1, 2021. www.minnesotawoodcarvers.com

[Krausman's Wildlife Reference Photos & Woodcarving Studio](#), 1750 Co. Hwy 557, Gwinn, MI

Krausman's Woodcarving Studio 2022 Seminar Schedule

Winter - Virtual Classes

Feather Anatomy and Morphology taught by Keith Mueller. Class length: 4 days

Cost: \$550 + \$50 kit fee.

Decorative, Life-Size, Flushing-into-Flight American Woodcock taught by Keith Mueller

Class Length: 10 days Cost: \$1,395 + Kit

The Doane Experience, Doane University, 1014 Boswell Avenue, Crete, Nebraska

45th Annual week long residential woodcarving classes on the campus of Doane University sponsored by the Mid-America Woodcarvers Association

July 24 - 30, 2022 (February 1, 2022 class descriptions will be sent out and registration begins)

Classes are offered for beginner, intermediate, and advanced carvers. Click on link for mailing list.

*Places to Go Carving: Appleton, Berlin, Fond du Lac ,
Scandinavia, Oshkosh, Green Bay, Princeton, Waupaca, Wausau*

Thompson Center on Lourdes (TCoL), at St. Bernadette Center, 2331 E. Lourdes Drive, **Appleton**, WI
Room 209 at South Building (St. Bernadette School), (door by elevator).

Fridays, 9:00 a.m. to noon - Cost: \$2 daily fee. All ages.

New carvers are welcome! You must register ahead of time(920) 939-3088.

See www.thetcol.org for details.

Berlin Senior Center, 142 Water St., **Berlin**, WI 54923 (920) 361-5422

Wednesdays, 9:00 a.m. to Noon - Cost: Free.

Generally we have about 6-8 people for woodcarving.

Fond du Lac Senior Center Woodcarving Club, 151 East 1st Street, Fond du Lac, WI 54935

tel: (920)322-3630, Mondays, 9:00 a.m. - 11:30 a.m.

Yearly membership (age 50+) is \$10. New members always welcome.

Call to register (920) 322-3630.

ADRC Woodcarvers Group (Aging & Disability Resource Center of Brown County)

300 S. Adams Street, **Green Bay**, Wisconsin, Tuesdays, 8:30 a.m. to 10:00 a.m. - Cost \$2/day

Bring hand tools (no power allowed), wood & project e.g. caricature, chip carving, bark, fish, animals, holiday, etc. No classes, but experienced carvers will help re: tools, sharpening, painting, etc.

Iola Chippers & Sippers, Scandihaus Coffee Shop, 280 N. Main St., **Scandinavia**, WI

Tuesdays, Noon - 3:00 p.m.

No Fee. Informal group. All skill levels. New carvers welcome.

Oshkosh Seniors Center (OSC), North Building Woodshop, tel: (920) 232-5311

200 North Campbell Road, **Oshkosh**, Wisconsin

People are getting woodshop qualified in December with

January being targeted for resuming woodshop operations. Pyrography classes have resumed in the South Building. Currently masks required.

Princeton Carvers, American Legion, 853 W. Main Street, **Princeton**, WI

Tuesdays, 8-11 a.m. - Cost: \$2 daily donation to the Legion.

An informal group of 4-6 people meet Tuesdays to carve and woodburn. New carvers welcome.

Waupaca Senior Center , 407 School Street, **Waupaca**, WI (715) 258-4437

Wednesdays 8:00 a.m. to 1:00 p.m. Enter at School Street entrance.

Yearly membership (age 55+) is \$15 -\$20 depending on residence. Waupaca

Woodcarving Club plus Senior Center carvers, typically 20-25 people meet.

New carvers welcome.

Wausau Area Carvers, Forest Park Village, 2901 N. 7th St., Wausau, WI

(South side of Building, Ground Level; door is marked "Legacy Woodworking Academy")

Tuesdays 10 a.m. to 1 p.m.; Thursdays 5:30 - 8:30 p.m.

Contact Cheryl Ruplinger at cherriruplinger@gmail.com

Woodcarving Annual Show Calendar

2022 Southwest Florida Wood Art Exposition & Competition

Charlotte Harbor Event & Conference Center, 75 Taylor Street, Punta Gorda, Florida

January 7-8, 2022

2 Day woodcarving & woodturning show & competition, tool & wood vendors.

For details & entry forms see: <https://flwoodartexpo.com>

36th Annual Rio Grande Valley Woodcarvers Show & Competition

Nomad Shrine Club, 1044 W. Nolana Loop, Pharr, Texas

January 14-15, 2022 Friday & Saturday 10am -4 pm

Donation: \$3

For details contact Fred Stenman (651) 485-0580

www.rgvwoodcarvers.org

Carve-In 6 @ Bekkum Memorial Library Westby Me Show & Competition

206 North Main Street, Westby, Wisconsin

April 23, 2022 10am to 4 pm Free Admission

The 2021 46th Annual Mid-Wisconsin Chippers Woodcarving Show, Competition & Sale

The Oldest Annual Woodcarving Show in the State of Wisconsin.

Sunday, May 1, 2021, 9:00 am to 4:00 pm. The Oshkosh Convention Center, 2 North Main St.,

Oshkosh, WI between the Leach Amphitheater & the Best Western Premier Waterfront Hotel.

11th Annual Oshkosh Bird Fest

Saturday, May 7, 2022 at Menominee Park, Shelters 1 & 2, **Oshkosh**, Wisconsin 6 a.m. to 1 p.m.

For more event information check the Bird Fest website: <http://www.oshkoshbirdfest.com>

North Arkansas Woodcarvers' 43rd Annual Show & Competition

Baxter County Fairgrounds

May 7-8, 2022 Sat. 10-5; Sun. 10-4

Free Admission

The show features whittlers, woodcarvers, wood turners, vendors, judged competitions, demonstrations, and a carving contest.

www.northarkansaswoodcarvers.org

[International Woodcarvers Congress](http://www.woodcarverscongress.org) - **June 11, 2022 through June 19, 2022.** Jackson County Fairgrounds, 1212 E. Quarry St., Maquoketa, IA 52060. The 54th annual event; the oldest competitively judged, woodcarving art show in the USA with 116 categories judged. The week long Congress also has 1, 2, 3, and 5 day seminars & classes, and an Awards Banquet. In the past the one day class was \$53, 2 day - \$106; 3 day - \$159; and 5 day - \$265 plus materials costs for members.

Membership fee is \$20 per calendar year.

<http://www.woodcarverscongress.org>

A Few



Recent work by Don Weyenberg

Woodburned Bangles & Penguin by Donna Johnson



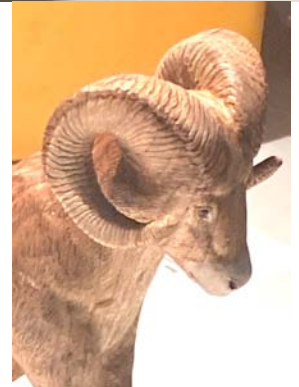
Saint Nicholas & Nativity Carvings from Harold Kinas



Registration for Betsy Popp - Bighorn Sheep/Ram Class

A six day class - Thursday, Friday, Saturday for two spaced apart weeks. Maximum - 12 students

Dates: April 7, 8, 9, & 21, 22, 23, 2022
Time: 8:00 a.m. to 5:00 p.m.
Where: St. Marks Evangelical Lutheran Church
140 S. Green Bay Rd.
Neenah, WI
Cost: \$125.00 + Material Fee (Mid-Wis. Chippers Club Members)
\$140.00 + Material Fee (Nonmembers)
Material Fee: \$55 paid to instructor at class
Students need to provide their own base on which to mount the bighorn sheep ram. Material Fee includes: butternut cutout, pattern, eyes, reference photos, pattern packet and paint.
Students should bring a lunch.
Skill level is more advanced, but instructor will work with any student no matter the level. Power carving is advised; students **will need a dust collector**. Students may carve with hand tools alone, but may find it hard to keep up. Students should bring their regular carving tools/bits/wood burner/paint brushes/Quick Wood or 5 Minute Epoxy.



Name:
(please print)
Address:

Phone:

E-mail:

Payment of Class Fee (\$125.00 members/\$140 nonmembers) at time of registration.
Registration Deadline: when class is full or April 1st.

Make check payable to: MID WIS. Chippers. On check note: "Popp Ram"

Mail to: Bill Tuchscherer
714 Coolidge St.
Neenah, WI. 54956

BE ON THE SPRING SHOW FLOORPLAN MAP BY REGISTERING EARLY!

2022 Mid-Wisconsin Chippers (MWC) 46th Annual "Artistry in Wood"

Woodcarving Show, Competition & Sale - Sunday, May 1, 2022 - 9:00 am to 4:00 pm

The Oshkosh Convention Center, 2 North Main Street, Oshkosh, Wisconsin

Downtown Across from Best Western Premier Waterfront Hotel & Ground Round Restaurant. Ask for Special Hotel Rate!

Over 500,000 people live in a 25 mile radius of Oshkosh!

Mid-Wis. Chippers Show Table Registration Form

(Judging Entries must be registered on Show Day from 7 to 8 a.m.; Judging starts promptly at 8:00.)

Name: _____

Address: _____ City: _____

State: _____ Zip: _____ Phone: (_____) _____

Email: _____

Join/renew membership in the Mid-Wis. Chippers only \$20 (Sep-Aug): New Renew \$ _____

Please reserve the following show tables (You must have a Show Table to Enter the Competition):

Mid-Wis. Chippers Club Member _____ Tables @ \$15.00 (\$20 after January 1, 2022). \$ _____

Are you sharing a Table (See page 2)? If so with whom? _____

Non-Member Artist _____ Tables @ \$25.00 (\$30 after January 1, 2022).....\$ _____

Are you sharing a Table (See page 2)? If so with whom? _____

Club Tables _____ @ \$25.00 (\$30 after January 1, 2022).....\$ _____

(Only one entry per participant at Club Tables.) List Club Table Participants on page 2.

Youth Group Table (under age 18) No Charge; Name of Group _____

Attach list of names and ages of youth.

Competing Youth (under age 18), there is no cost, but indicate Sponsor for Judging.

Sponsor: _____ (See page 2 for more information.)

Commercial Tables _____ Tables @ \$30.....\$ _____

Special Needs/Comments: _____

I, _____, will display my own work. I will not hold the Mid- Wisconsin Chippers Woodcarving Club or The Oshkosh Convention Center/Best Western Premier responsible for loss or damage to my work. Enclosed is check # _____ in the amount of \$ _____.

Signature: _____ Date: _____

Important: Return this entire form with your fee*. Mail by April 1, 2022 (April 15 final deadline for late registration.)

Make checks payable to Mid-Wisconsin Chippers. * Fees current as of May 1, 2021.

Mail to: Paul Wolters, 1273 Meadow Lane, Neenah, WI 54956

Please print and return entire form.

Keep a copy for your records.

Rev.: 4/7/2021

TABLE SET UP BEGINS AT 7:00 A.M.

TABLES MUST REMAIN SET UP FROM 9:00 A.M. UNTIL 4:00 P.M.,

NO EARLY PACK UP.

- Table Fee includes admission for registrant & one helper (two total), except club table admission is only for participants (six total).
- **Sharing a non-club Table** - Each participant pays the full table fee & has 4 entries. (Some share a table for their convenience or because they are only bringing a few items for display.)

Club Table Participants: (Special club rate, only one entry for each participant; Limit 6 for Judging):

- a) _____ b) _____
c) _____ d) _____
e) _____ f) _____

- *****
- **Youth Group Table** - Members of a recognized Youth Group are encouraged to exhibit their carvings at our show by registering for our no charge Youth Group Table. We require a list of participants, ages & organization name and city.
 - **Competing Youth** may enter their carvings through the Youth Group Table or through a Sponsor such as a Club Table or Artist Table whether member or nonmember. The competition fee is waived for Youth under the age of 18 with a maximum of two (2) competition entries per individual. Carvings are required to remain on display at the Sponsor Table throughout the Show except for the time of Judging.

Current Skill Levels of Competition: Youth Novice Intermediate Open Masters

Current Competition Categories: (See Judging Entry Form for rules & number of entries allowed.)

- | | | |
|--------------------|-------------------------|-----------------------------------|
| 1. Waterfowl | 10. Human | 19. Interpretive/Stylized |
| 2. Song Birds | 11. Relief | 20. Carved Canes & Walking Sticks |
| 3. Game Birds | 12. Group* | 21. Pyrography |
| 4. Shore Birds | 13. Mythical | 22. Pyrography With Color |
| 5. Birds of Prey | 14. Santas | 23. Gourds, Carved and/or Burned |
| 6. All other Birds | 15. Caricature | 24. Intarsia |
| 7. Fish | 16. Amphibians/Reptiles | 25. Bark Carving |
| 8. Marine Mammals | 17. Religious | 26. Misc.(Any other woodcarving) |
| 9. Mammals | 18. Chip Carving | |

*A group is two or more subjects on one base, e.g. two adult male chickadees on a single base is eligible for either the group category or the song bird category.

Note: Entry officials may override the choice of category.