

Betsy Popp Wisconsin White Tailed Deer - Buck Class is already half full!

Whittle Bits and Pieces

Mid-Wisconsin Chippers Newsletter for December 2022

Club President : Tim Gosz Vice-President: Duane Foote
Treasurer: Bill Tuchscherer Secretary: Cedric Richeson
Annual Show Director: Paul Wolters

Visit our Website at: <http://midwisconsinchippers.weebly.com/>

Welcome to New Member
Debra Terry!

Christmas & Holiday Potluck

Join us at our Christmas & Holiday Potluck meeting on:

Sunday, December 4th!

Set Up at 12:30; Eating Starts at 1:00 p.m.

What to bring: spouse or guest, Dish to pass, Any needed serving utensil
Club provides: plates, napkins, utensils, cups, coffee, turkey & ham slices

Gloria Dei Lutheran Church, 1140 Tullar Road, Neenah, Wisconsin
No Board meeting in December. No Library Time.



*The Chippers Club logo:
"The carver on the stool"
was created by Bob Yancey
MWC Club President
from 1984 - 1985.*

Mid-Wisconsin Chippers
Woodcarving Club (MWC) Board

Barb Behm Dick Krummick
Lee Belanger Rodney Manthey
Gene Bengel Chris Rigotti
Steve Binder plus the Officers

Club
Webmasters:
Josie Hartzke & Jackie Silva
Librarian: John Goheen

*Register now!
2023 MWC Show
27 Tables Registered;
avoid the Jan 1 increase!*

CONFIRMED VENDORS
WHITLIN' SHACK
GOOD WOOD
CHIEF BOOKS

Dues \$20 are past due



*Thank you to the 67 members
who have paid!*



Table of Contents

Meeting Calendar, Location,.....	Page 2
Robert "Bob" Gehr Obituary.....	Pages 3-4
November Club Report.....	Page 5
Club News.....	Page 5
Show 'N Tell from November 13th Meeting.....	Pages 6-9
Power Carving II Presentation.....	Pages 10-11
47th Annual Mid-Wisconsin Chippers Woodcarving Show, Sale & Competition News.....	Pages 12-15
Bench Hooks and Abranet Sanders for sale.....	Page 16
Jim Hart's Good Wood Taking Orders.....	Page 16
Friendship Cane Blocks & Theme for 2023 Show.....	Pages 17-18
White Tailed Buck Carving Class - Betsy Popp.....	Pages 19, 27
Chip Carving Class - Jan Jenson.....	Pages 20-28
Oshkosh Senior Center Woodshop News & Classes.....	Pages 21-23
Roadtrip Woodcarving Retreats, Workshops & Seminars.....	Page 24
Places to Go Carving in Mid-Wisconsin	Page 25
Annual Woodcarving Shows List (Updated).....	Page 26
47th Annual Mid-wis. Chippers Show Table Registration Form.....	Pages 27-28

Regular Club Meetings

The Mid. Wis. Chippers Club meets at Gloria Dei Lutheran Church, 1140 Tullar Road, Neenah, Wis. (by Neenah High School) on the first Sunday of each month (except as noted.)

Meetings are at 1:30 p.m. (except our December potluck with a noon setup & lunch at 1:00 p.m.)

Board meetings are at 12:30 p.m. (No Board meeting in December.)

2022-2023 Club Meeting Calendar

- ✓ August 28 *Show 'n Tell (or "How I spent my summer vacation")*
- ✓ October 2 *Power Carving Demonstration Part 1 by Chris Rigotti, Steve Binder & Gene Bengel
Flexible shaft, micromotor, rotary and reciprocating tools plus dust collectors
plus Betsy Popp 2023 Buck Class Preview*
- ✓ November 13 *Power Carving Demonstration Part 2 by Keith Melzer & Patrick Pelkey
Bit shapes, sizes, brands, materials from diamond, steel, ceramic, and ruby to
sanding drums, Attachments for hogging, texturing, both rough and detail work*
- December 4 **Christmas & Holiday Potluck**
- January 8 *Relief Carving Demo & Presentation (Shallow, Deep & Pierced) by Gene Bengel*
- February 5 *Creativity, Inspiration & Skill Development Panel Discussion by Barb Behm,
Linda Gomach, Virginia Temme*
- March 5 *Choosing & Applying Protective Coatings to Woodburnings & Carvings by Jeff Becker*
- April 2 **Show Preview, Judging Pre-registration, Friendship Canes, Elections**
- May 7 **47th Annual Show at Oshkosh Convention Center**
- May 21 *Mid-Wis. Chippers Carver Slide Show by Paul Wolters & Annual Show Review*

Pick up a pocket card with meeting dates & presentations at our December potluck!

Long time Chipper Robert "Bob" Gehr Passes Away at 91

Obituary from Kessler Funeral Home reproduced below.



Robert R. Gehr, age 91, of Neenah, passed away on Friday, November 11, 2022 due to complications from a fall. Bob was born in Green Bay, Wisconsin on October 28, 1931, the son of the late William F. and Rosalie J. (Bruyere) Gehr.

Bob graduated from East High School in 1950. He served 4 years in the U.S. Navy. Bob graduated from the University of Wisconsin – Madison in 1959 with a degree in mechanical engineering. He was employed by E.I. DuPont in R & D in Iowa, Texas, Virginia and Wisconsin, and then by American Can. Bob married Betty Lue Carriveau on June 18, 1955. After retiring, Bob took two weeks off. He hit the ground running going into full time volunteer work. He was a 20+ year active member of the Neenah Knights of Columbus with their many charity projects. He especially enjoyed his time with his co-Knights and friends at the Knights' weekly summer

brat fries (AMCO). He was also a member of the Neenah-Menasha Retired Men's Club, the Mid-Wisconsin Chippers wood carving club (he was a master carver). Bob dedicated time tutoring math at Coolidge Elementary School for 6 years. He volunteered at St. Vincent de Paul for over 20 years. He was an active member of the St. Margaret Mary parish, in which he served many capacities over 50 years. In all of his endeavors, Bob had a gift for joyfully serving others.

Bob was a humble, kind man. Bob was a fun husband, father, and grandfather and had such a great sense of humor all his life.

Survivors include his wife, Betty and 4 daughters: Robbin (Richard) Randall, Stevens Point; Kathryn (Tom Somers) Gehr, Garner, NC; Laurie (Rick) Zeininger, Neenah; and Marcia Gehr, Neenah. Bob has a grandson Shayne Morrissey, Burlington, VT and a step-grandson and daughter-in-law in Chapel Hill, NC. Bob has sisters-in-law, Joyce Gehr, Marie Hazen, Eloise Carriveau, Judith Krueger, Jean Carriveau, brother-in-law Michael Carriveau, and many nieces and nephews.

Bob was pre-deceased by his parents, two sisters (June Supita and Doris Turek) and a brother (William Gehr).... An endowment fund is being established for St. Margaret Mary parish in Bob's name.

In 2014, Paul Wolters profiled Bob in *Whittle Bits & Pieces* (excerpted below).

"I stopped by Bob's house for this interview and he was out raking leaves. I asked if I could help and he said "No." Was I relieved!

Bob and his wife, Betty, live in a beautiful home in Neenah and have been married for 59 happy years. They have 4 lovely daughters. Bob is a graduate of the University of Wisconsin

Long time Chipper Robert "Bob" Gehr Passes Away at 91 continued

at Madison with a degree in Mechanical Engineering. He retired after working 28 1/2 years for Pechiney Plastics at Neenah, as a manager in the Staff Engineering Group.

Bob became involved with carving around 1995 when Betty went to a carving show at Sunnyview Expo Center in Oshkosh. When she got home from the show she mentioned to Bob that he should try carving. She told him about this wonderful carver he should meet. Bob had no interest in carving, but decided to meet up with this gentleman. Lo and behold they met and have been close friends ever since. The carver was Lyle Kraus!!

Bob joined the Mid Wis Chippers in 1995 and became an active member. He became president for 4 years from 2004 to 2008, followed by being club treasurer for 5 years. He also took on the responsibility of chairing the annual Wood Carving Show for 10 years and ran it very efficiently.

Bob has carved a variety subjects over the years from caricatures, animals and humans to acanthus carving which is a Norwegian style of carving. Acanthus carving has become Bob's favorite type of carving. It is a classic art form which includes the beauty of relief carving with the flowing shapes of the acanthus leaf.

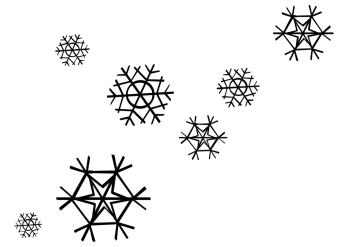
Bob is an active volunteer in his community and in his church, St Margaret Mary in Neenah. He belongs to the Neenah Knights of Columbus and is the past President and Treasurer of the group. For 17 years he chaired the K of C brat fries at Bemis Co, providing lunch for the employees on Wednesdays from April to the end of October. He also volunteers every Monday and Friday at St. Vincent De Paul Thrift Store in Neenah. He helps distribute Christmas gifts to needy children at the Neenah-Menasha Boys and Girls Brigade and helps with the annual "Backpack for Kids" program which provides school supplies for children in need at the beginning of the school year.

Over the years, Bob has taken carving lessons from Harley Ressel (sic Refsyl)(flat plane carving), Lyle Kraus, Richard Young, Hans Sandom (Acanthus Carving), Becky Lusk, Hely Meier, Carol Jean Boyd (Cypress Knees) Stu McCutcheon (turtles), and Marv Kaisersatt (a great caricature carver)

One of the stories that came to mind is when Bob was taking a class from Richard Young, and while using a V tool, slipped and drove the tool into the fatty part of his thumb area resulting in a fountain of blood. Bob's thought was, "I paid for this class and I'm not going to let this stop me now!" [from December 2014 Whittle Bits & Pieces]



November Club Report



The general meeting was opened at 1:35 pm by President Tim Gosz. Total attendance was 40. Tim Gosz welcomed new member Debra Terry.

The Treasurer's Report was made and upcoming classes were reviewed. Dues, 2023 Chippers Show table and class registration fees were collected & made.

After snack & library time, the club held Show 'n Tell.

The Power Carving Part II presentation was given by Keith Melzer & Patrick Pelkey. [Details in this newsletter.] After the presentation, the Club held Show 'N Tell.

The meeting closed at about 3:15.

CHRISTMAS & HOLIDAY POTLUCK MEETING ON SUNDAY!

Set up for potluck at 12:30; eating begins at 1 p.m.

Last meeting for 2022! Our Treasurer Bill Tuchscherer will take table registrations for our 2023 May Show, class registrations for teh Popp & Jenson Classes, and Dues payments for any stragglers. We we also have patches available and you may pick up Friendship Cane blocks!

Since Bill would like to eat too, try to make payments between 12:30 & 1 pm when the buffet line starts.

Yes we will have Show 'n Tell, but no Board Meeting. Library time may happen.



MID-WIS. CHIPPERS CLUB LIBRARY
CATALOG NOW ON LINE!

Our club library book & magazine holdings is now available on line at:

<http://midwisconsinchippers.weebly.com/>

You can search by category, title or author.

Club members! Look on line for carving book. We have lots of reference materials.

Then just bring your list to the meeting and retrieve the wanted books from their bins on the tables.

Ask Librarian John Goheen, if you need help.

Show 'N Tell Photos - November 13th Meeting



Bill Tuchscherer showed his Brett Farve work in progress and also a finished commissioned work of a retired bricklayer. The frame Bill used was from Michaels; Bill likes how the bronze color sets off the woodburning.



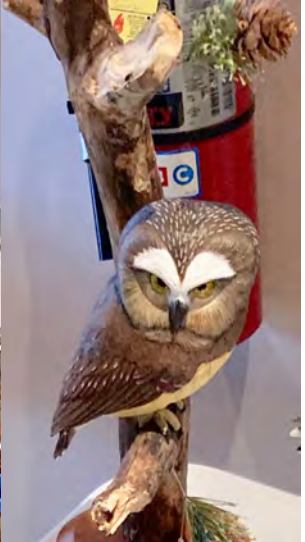
One Fish, Two, Fish, Red Fish, Blue Fish. Well how about a green sea turtle & a red sea turtle? Both Linda Gomach & Dick Krummick received Blue Ribbons at the Waupaca Show for their Sea Turtles. These were class projects taught by Gene Bengel. Very nice work!

Duane Foote carved a Maple Leaf and kept a natural finish. Was it carved in butternut? Duane does a lot of his carving at the Berlin Senior Center.

Show 'N Tell Photos - November 13th



Barb Behm accented her woodburning with a touch of color for the Saw-Whet Owl's eyes. This is a Deborah Pompano pattern from her book "Woodburning Project & Pattern Treasury".



The evergreen needles are clumps of nylon bristles.

Rick Goodell is a blue ribbon birdman. He showed his Saw-Whet Owl, Kingfisher, Cardinal and Humming-bird carvings. Rick made the hummingbird from tupelo & flower from basswood with a stamen from wire & glued sawdust.

Show 'N Tell Photos - November 13th Meeting



Virginia Temme bought a cypress knee at her first Chippers meeting. Here she shows what she did with it. Using only hand tools, she textured by woodburning then painted. Idea is from a carving magazine.

Paul says it will be a relief when he is done with Rodney. Here Rodney is a work in progress.



Lee Belanger showed his caricature carving of McCoy the Gunslinger.

Watch in the coming months for a 360 degree house cottonwood bark carving class that Lee is planning.



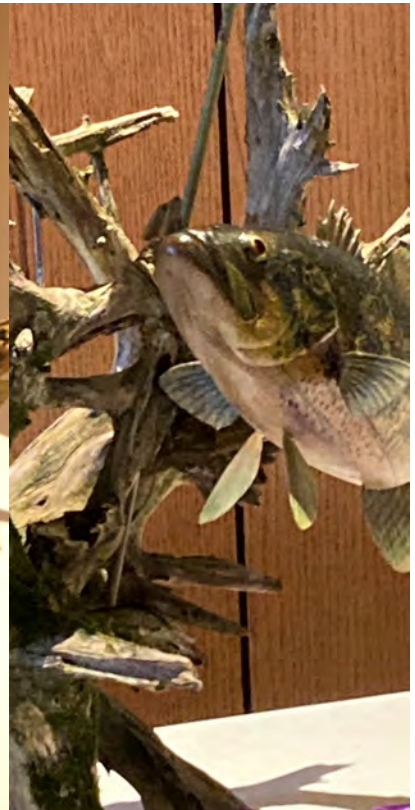
Richard Young and his hound dog band!



Show 'N Tell Photos - November 13th Meeting



Dave Wirth shows another duck and he keeps me guessing. Is it a Canvasback? Ah, no. My notes say a redhead and the October duck was a pinhead. It makes me feel like a pinhead for not knowing my duck names. Dave also carved a wood duck, but that got donated for a sports club raffle.



We have an encore of Steve Noll's Best of Show carving from Waupaca. His dragonfly wings were made from varnished decayed spring leaves.



John Goheen showed a panda that he carved. John and Richard Krummick will be teaching a class in January at the Oshkosh Senior Center to carve, texture and paint this panda. This panda can be adapted to accommodate carving by all skill levels. See details in carving class section.

Power Carving Demonstration Part 2

by Patrick Pelkey & Keith Melzer

Bits Burs, Sanding Drums & Accessories



Keith Melzer (left) and Patrick Pelkey (right) are set up and ready to go for their power carving presentation which focused on bits, burs, sanders and accessories for power carving.



Patrick (near right) demonstrating his Foredom flexible shaft rotary tool.

Another great power carving presentation! Keith started it off showing his Master Carver rotary tool which is similar to a Foredom. Keith emphasized the need to use clean burs and bits and recommended using "Tool-Bit Cleaner" which is available from Jaymes Company. This product is used by simply soaking the burs for one hour then rinsing. The downside is that shipping cost is a minimum of \$18 via UPS.

Keith's Mastercarver is a 1/2 hp rotary tool with a keyless chuck that can accommodate 1/4", 1/8" and 3/32" shaft diameter bits. He uses the MasterCarver for hogging out the wood to get it roughly shaped. This process is very messy and Keith usually does it outside or in the garage. He uses Super coarse bits from Saburr or Kutzall. A typical price would be \$25-30 for a Saburr cylinder shaped bit.



After hogging out the carving, with the powerful MasterCarver, Keith then goes to a Dremel with a

Power Carving Demonstration Part 2

by Keith Melzer & Patrick Pelkey

Bits Burs, Sanding Drums & Accessories

1/4" shank using again Kutzall cylinders or balls. As he progresses in carving, he uses a lot of flame or ball shapes and then proceeds to sanding bits. A 1" x 1" drum sander is recommended (Available from Hummul). Starting with a 50 grit, then 120, then 220, Keith says this is really good for roughing out a duck. Also, cushioned sanders that are 1/2" or 3/4" long with a 1/4" shank are useful. For songbirds, cushion sanders with a 3/32" shank are used.



For finish sanding Keith uses Sand-its with a 3/4" mandrel available from Jaymes. He cautions that you need to watch the lap with respect to the sander rotation. The original kit is Sand-It brand, but a generic kit is sold by Hummul. Keith has made his own using foam pipe insulation.

Another useful item is 3/4" thick white scotch-brite pads cut to a 4"x4" square and placed on a 1/4" mandrel. Just cut the corners to a hexagon and it will round in use.

Patrick Pelkey was next up and he reiterated the need for safety recommending the use of a leather apron and leather gloves or thinner Gorilla brand gloves available at Home Depot or on line. Woven gloves are to be avoid since they can get caught in the rotary bits. Also, he urges use of prescription safety glasses and a dust mask/respirator in addition to a fan/filter or collector. Very good dust masks with replaceable filters are readily available at Woodcraft of Appleton.

Patrick has also used a Foredom, but now prefers his Ram iCube micromotor which has a digital readout and operates forward or reverse up to 45,000 rpm. It comes with a 1/8" handpiece. Patrick's iCube is also equipped to allow hook up and switching between two handpieces. He can have one for 1/8" shank bits and another for 3/32" shank bits and avoid changing collets. While Patrick has not encountered any problems running 1/8" bits at 45,000 rpms, for the smaller 3/32" shaft take extra caution to make sure the bit is seated and locked in. Also, do not run bits above their rated rpm maximum.



In doing comfort birds, Patrick goes from coarse to fine grit using burs instead of sanders. Cylinder burs with smooth "safety" endcaps avoid unwanted sanding at the bur end. The 3/32" shaft fine bur can remove scratches. Patrick also recommends Guge sanding cones. The sanding bits should be run at a slower speed, no more than 15,000 rpms.



The presentation was well attended and it was particularly useful for handcarvers who are contemplating adding power carving to their skillset.



Dear Wood Artist,

The Mid-Wisconsin Chippers Woodcarving Club is hosting its 47th Annual Show, Competition & Sale on Sunday, May 7, 2023. This is the Oldest Woodcarving Show in Wisconsin. Our show will be held at The Oshkosh Convention Center, 2 N. Main Street, Oshkosh, Wisconsin. On the shore of the Fox River in downtown Oshkosh, the Oshkosh Convention Center is a great facility in a beautiful location!

We hope you had a wonderful time at our last event and we would be pleased to have you participate in 2023 by registering for a Table. In 2022 our space was completely booked with 85 tables. Our table fee is \$30 for a standard 8 foot table. **There is a special early bird rate of \$25 if you register before January 1st! Club members early bird rate is \$20!** You provide your own table skirt or skirts may be rented for \$15 from the facility. The fee includes admittance for you and a helper plus your entry of up to 4 carvings (two maximum per category into our judged competition). Parking is free. The Convention Center is across from the Best Western Premier Waterfront Hotel. If you need to cancel attendance, your table fee will be fully refunded as long as cancellation is received prior to March 1st.

A wonderful day is being planned including:

- A Fish Carving Presentation by Harold Mohr
- A Woodcarving Presentation by Mid-Wis. Chippers Club
- Carving Tool & Wood Vendors including Whittlin' Shack and Good Wood, Inc.
- Competition will Judge entries from 27 categories for Master, Open, Intermediate, Novice & Youth Skill Levels
- A new Competition Category for Pyrography - Human
- Our latest Woodcarver Patch and much more

Over 1/2 million people live within a 25 mile radius of Oshkosh, the Event City and home to the EAA Fly In & Aviation Museum. There are plenty of accommodations and things to do and see, including the Oshkosh Public Museum, Paine Art Center & Gardens, and Military Veterans Museum & education Center, the Saturday Night Gallery Walk in downtown, the University, Lake Winnebago, Fox River and more.

If you register for the show now, your name and table # will be included in our Show Program floor map. If you have any questions, please call Paul Wolters, Show Director (920) 727-2139 or visit www.midwisconsinchippers.weebly.com.

Thanks, Cedric Richeson, Secretary
Mid-Wisconsin Chippers Woodcarving Club

P.S. Also, in nearby Neenah, a Jan Jenson 2 Day Chip Carving Class will be held the Thursday & Friday before the Show, and a six day Betsy Popp Leaping White Tailed Deer Buck carving class will be held April 27-29 & May 11-13.

The 47th Annual Mid-Wisconsin Chippers Show, Competition & Sale

Sunday, May 7, 2023

Oshkosh Convention Center

2 North Main Street

Oshkosh, Wisconsin

Judging Registration 7:00 a.m. to 8:00 a.m.

Exhibitor & Vendor setup 7:00 a.m. to 9:00 a.m.

Open to public 9:00 a.m. to 4:00 p.m.

- 500,000 people live within a 25 mile radius of Oshkosh.
- Easy access from Highway 41 via Hwy 45, Hwy 21, 9th Ave. & Hwy 44 (S. Park Ave).
- Plenty of free parking. 225 spaces on Fox River side next to main entrance from lot.
- Additional parking in nearby lots and streets.
- Easy access for loading and unloading.
- Carts available for moving.
- Standard size 8 foot tables.
- Table skirt rental available if scheduled in advance.
- Natural light from riverside glass wall and overhead lighting.
- Glass wall hallway to entrance.
- Carpet tile flooring in exhibition area.
- Food concession adjacent exhibition hall for coffee, soft drinks, continental breakfast and sandwich lunch items for sale with seating.
- Restrooms and drinking fountains.
- ATM by Food Concession
- Show Program will include floorplan map.
(Early registrants will have their show location identified by name/table # on this map.)

Show activities to draw visitors *including*:

- Judged Competition
- Fish Carving Presentation
- Mid-Wis. Chippers Club Presentation
- Demonstrations
- Raffle including carving tools & related items, Friendship Canes, art, books, etc.
- Informational Tables on Woodcarving Clubs, Carving magazines & more

*"The Oldest Annual Woodcarving Show in the State of Wisconsin"
Our 47th year!*

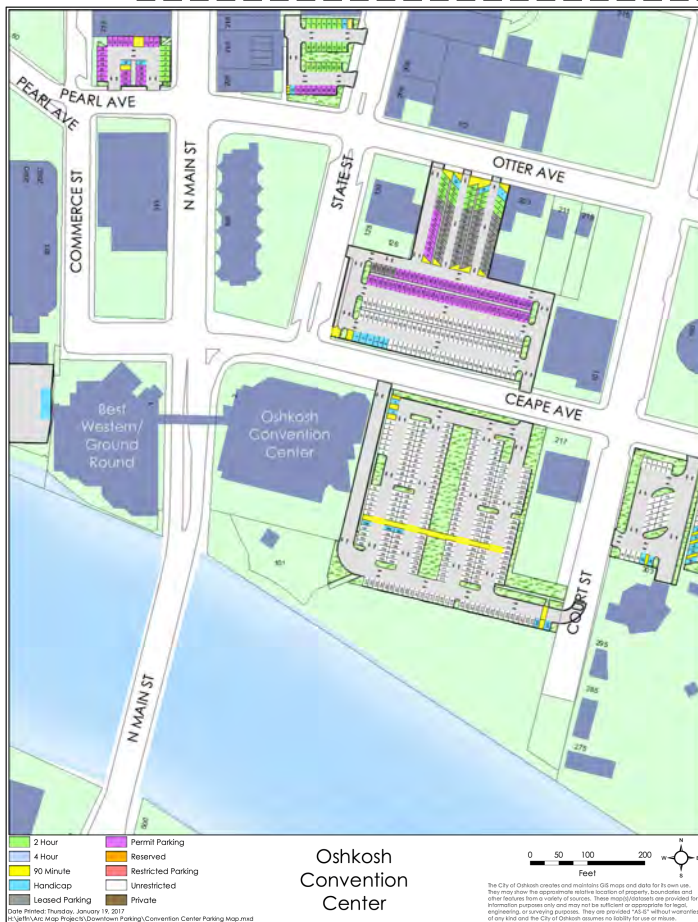
MID-WIS. CHIPPERS WOODCARVING CLUB MAY 7, 2023 SHOW, COMPETITION & SALE AT THE OSHKOSH CONVENTION CENTER

Oshkosh is Event City. Make it a weekend. The day before our show you can check out the EAA Aviation Museum, Oshkosh Public Museum, Military Veterans Museum & Education Center, Paine Art Center & Gardens and more.



The Best Western Premier Waterfront Hotel & Conference Center connects to The Oshkosh Convention Center.

Over 500,000 people live within a 25 mile radius!



Near University, Leach Amphitheater & Downtown business district with easy access from Expressway 41 via Ninth Avenue exit to Main Street. Attractive space & great location!



Off street parking next to main riverside entrance.



Carpet tile flooring.

Plenty of free parking. Show & Parking all at Ground level. Easy unloading & loading. Carts available.

The Mid-Wis-Chippers Club website has current information, forms, articles, and photographs from club events and meetings. Go to: <https://midwisconsinchippers.weebly.com>

**The 47th Annual Mid-Wisconsin Chippers Show, Competition & Sale
will be held on Sunday, May 7, 2023 at
The Oshkosh Convention Center in downtown Oshkosh, Wisconsin.**

Located between the Fox River and Ceape Avenue at 2 North Main Street, Oshkosh, Wisconsin, The Oshkosh Convention Center is connected to The Best Western Premier Waterfront Hotel & Ground Round restaurant by an elevated pedestrian bridge that crosses Main Street.

The adjacent Best Western Premier Waterfront Hotel offers a Show rate for attendees of \$109.99 per night for Saturday & Sunday. Rooms reserved until April 1. Check Best Western for details.

The Ground Round Restaurant is located on the ground level of the hotel adjacent the river.

A food concession with seating available on the Convention concourse (just outside our exhibition area).

Early registrants will have their name and show location marked in our Show Program on a special floorplan map.

This will make it easier for show attendees to find your table. Often attendees browse the whole show before making their purchases; the floor map in the program allows them to easily find and return to your table to buy that art/tool/book/wood/& more that they now know they need and want for themselves/ Aunt Irene/brother Aaron/friend Ruth/ or granddaughter Emily.

Register early to guarantee your place in this great 2023 show!

Woodcarvers, pyrographers, a competition for the best woodcarvings, carved art for sale, bird & fish carvings, caricatures, food concession, and the always popular bucket raffle with carvings and a host of interesting, new and handmade practical and artistic items.

We have planned a great fun show for our audience and the carvers and vendors who make it all happen!

We hope to see you in 2023!

Our 47th Annual Show is the oldest Woodcarving show in the State of Wisconsin.

☆ The Oshkosh Convention Center
B Best Western Premier Waterfront Hotel has Special Show Rates



**BENCH HOOKS FOR SALE! AT OSHKOSH SENIOR CENTER
ALSO, WOOD SANDING BLOCKS WITH ABRANET SANDING MESH**

The Oshkosh Senior Center (OSC) Woodshop has bench hooks for sale.

There are both left handed and righted versions available. Bench hooks protect table tops when carving and are very useful for chip carvers, relief carvings, and other small carving projects. The 10" x 12" Bench hook has a carving surface between the wood stops of approximately 8 3/4" x 10 3/4".

The price is \$25. Proceeds support the OSC Woodshop.



The bench hook bottom is affixed with a slip resistant shelf liner.

The OSC Woodshop also has a sanding kit for sale for \$20.

The kit includes: 2 wood sanding blocks and 8 pieces of Abranet sanding mesh. Each block has a hook fastener surface to removably affix loop backed sanding mesh (Velcro type attachment).

Large block is 2 1/2" x 5".
Small block is 1" x 3 3/4".
Sanding mesh grit sizes are: P80, P120, P240 & P400.

Sanding mesh is wonderful stuff, better & more long lasting than regular sandpaper.

Jim Hart's Good Wood, Inc

Jim Hart will have five tables of wood at our May Show including:

Basswood
Cottonwood Bark
Manzanita Root Burls
Grape Vine

If anyone wishes to make a special order, he will take orders for delivery at the show.

Text or call him at (715) 768-0204.

Jim says:

"If an order is made and it is over \$40 total, I will cut it if materials are available and bring it down to the show. There would be no delivery cost so that alone is substantial savings. The only thing I have to mention at this time is I have no finished bass over 3.5 thick and don't expect to have any by then. It is just so difficult to find the thicker bass. This is important info especially when someone wants a longer piece of wood as we seldom carry much over 12" long. Please give them my phone number and tell them to give me a call. I can discuss the order and shoot a final cost to them. If the wood comes down and it isn't up to their standards, no problem. They can find some wood on the tables that is more to their liking and everyone is happy. This seems to work well with other clubs."

Friendship Cane for 2023 Show

Our Friendship Cane blocks are ready for you to pick up for carving and woodburning!

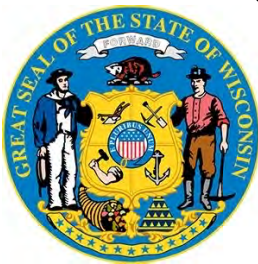
This is a BIG fundraiser for our club with lots of Show attendees buying tickets for this prize. Our goal is to create two canes which means we need 30-40 finished blocks; the more the merrier.

Each year club members, who are able, pick up a rectangular basswood block (there is no fee or charge for the block). The block is carved or woodburned and returned by the March meeting. The blocks are then assembled onto a dowel to make a Friendship Cane which is raffled off at our Annual Show Bucket Raffle. There are three types of blocks. Most of the blocks are 2" x 2" x (4" or 6"), and these make up the bulk of the cane. Each cane (Our goal is two) has a single holed 2" x 2" x 6" base (which is typically woodturned), and a similar top.

One cane has a theme: *The 2023 theme is: "Wisconsin"*.

The other Cane is "Carver's Choice". Any design in good taste is welcome to make an eclectic potpourri of art.

Wisconsin - Dairyland, Vacationland, Packerland Wisconsin



The possibilities are magnificently Wisconsin in the State's rich heritage!

Ideas:

The State Seal of Wisconsin depicts: a Badger, a sailor & a miner. The badger is the state animal and Bucky Badger is the official mascot of UW-Madison. The sailor & miner represent the 2 most important industries at the State's founding.

The Wisconsin maritime industry is long and storied. From the great iron ore ships that sailed then cruised Lake Superior and Lake Michigan (one such ship memorialized in song "The Wreck of the Edmund Fitzgerald" to the Mississippi River barges, houseboats (and in days of yore Paddlewheel Steamboats). The Wisconsin shipbuilding industry has spanned the birchbark and dugout canoes of its ancient Indian tribes to the wooden ChrisCraft pleasure yachts and Mercury Marine and Evinrude powered pontoon boats, fishing craft and speedboats, to the present day navy ships, barges and pleasure craft, Wisconsin also has ports to two Lake Michigan crossing ferries: the SS Badger and the Lake Express .

Mining in Wisconsin began with the lead mines in southwestern Wisconsin where the lead miners lived in temporary hillside caves and were called "Badgers." The Badger State was a reference to these miners. Centuries before these lead miners Wisconsin indians were mining copper in the Superior Lake area. Other minerals mined commercial have been iron and zinc. Perhaps some of that zinc was used in the dry cell batteries that were made by Ray-O-Vac Battery which got its start in Madison in 1906.

Wisconsin State Symbols: bird - Robin; flower - Wood Violet; Fish - Muskellunge; Fruit - Cranberry (Wisconsin produces 59% of the cranberries harvested in the USA); Wildlife animal - White Tailed Deer; Domestic Animal - Dairy Cow; Tree - Sugar Maple; Insect - Western Honeybee; Mineral - Galena (Lead Sulfide); Beverage (NO It is not Beer, nor is it a Brandy Old Fashioned, Sweet, Korbel... it is M I L K!; Dance - Polka.

The Ringling Bros. Circus was founded in 1884 in Baraboo Wisconsin So Circus images, acts & animals are fair game: like Lions, Tigers, Bears, Oh My! Elephants, Performing Seals, Gorillas, Monkeys, Apes, Trapeze Artists, Circus wagons.

Friendship Cane for 2023 Show



More Ideas:

American Ginseng - 95% of the USA production comes from Marathon County, Wisconsin. Wisconsin is also the nation's largest cheese, cranberry and fur producer, and 3rd biggest in potatoes.

Game & Fur Animals: White Tailed Deer, Grouse, Muskie, Walleye, Quail, Turkey, Geese, Ducks, Elk, Bear, Sturgeon, Pheasant, Wolf, Fox, Mink (Wisconsin is the largest Mink fur State).

Literary: Many books are set in Wisconsin. Who can forget Sterling North's raccoon "Rascal." Or Leopold's A Sand County Almanac, Hamlin Garland's "Main Travelled Roads", or works by Laura Ingalls Wilder, Zona Gale, Edna Ferber, Black Hawk, and Ella Wheeler Wilcox.

Sports Teams: Everybody knows about the Brewers, Bucks and Packers, but what about...



Wisconsin Food - Cheese, Cheese, Cheese, Colby is named after a Wisconsin town where it was first made, 100% of American made Limburger Cheese comes from Monroe Wisconsin. Sheboygan Bratwurst, Schlitz The Beer That Made Milwaukee Famous, Blatz, Pabst Blue Ribbon, Miller, Old Style, Point, Leinenkugel, Chief Oshkosh, Brandy Old Fashioned Sweet Korb, and of course MILK.



Other ideas: Horicon Marsh, Whooping Cranes, Ice Age Trail, The Milwaukee Road, Loggers & the Lumberjack & Logrolling Championships, The Fishing Hall of Fame, EAA, the magical Harry Houdini ?

Our Friendship Cane blocks are ready for you to pick up for carving and woodburning!

This is a BIG fundraiser for our club with lots of Show attendees buying tickets for this prize. Our goal is to create two canes which means we need 30-40 finished blocks; the more the merrier.

Note: The Chippers Club Library has "Carving a Friendship Cane with Tom Wolfe & Friends"

Registration Form attached to Newsletter

Jump Buck Jump! White Tailed Deer Leaping Buck- Choice of three patterns!



Betsy is a born story teller and that means she is a born teacher. She relates her process from conception to completion and includes the problems and obstacles that naturally occur as well as how she addresses them. The results of her talent and artistry are evident in her carvings, but it is hard to convey her ability as a teacher to one who has not taken one of her classes.

This Betsy Popp Class is six days total (over 40 hours of classtime instruction, carving & painting). Students will choose from three different Wisconsin White Tailed Deer Buck patterns: The Take Off; Leap!; and Touchdown! The carving will be done in butternut wood. The class fee (\$225 for Mid-Wis. Chipper (MDC) members & \$235 for nonmembers) includes one cutout of your choice (both buck & antlers), eyes, a pattern packet, reference photos; putties & paints. Extra cutouts are available for \$35 each.

To reserve your place in what will be a memorable class make a nonrefundable deposit of \$100. If you want extra cutouts, then include \$35 per extra cutout with your deposit. Class size is limited to 12. The balance of \$125 (\$135 for nonmembers) is due before March 15th. Cutouts (and directions) will be available for pick up on Sunday March 5, 2023 at the MWC meeting (1:30 pm) at Gloria Dei Lutheran Church, 1140 Tullar Road, Neenah, Wisconsin. *Can't make that meeting? No problem! E-mail cedricheson@icloud.com to make an alternative pick up date, time and place.*



While the cutout will be a great time saver, students are encouraged to further shape their cutout prior to class (*Lots of laughs; like that ever happens!*)

Big Bucks! Big Bucks! Big Bucks!

There will be Betsy Buck carvings for examples at the class. This will be a more advanced class, but Betsy will work with students of any level. Power carving is advised; students will need to provide their own dust collector. Students carving *solely* with hand tools may find it hard to keep up. Students should bring their regular tools, bits, dust collector, woodburner, brushes.

Class Registration form is attached.



Betsy Popp is a widely recognized and award-winning artist. She is a UW-Stevens Point graduate with an Art Education degree & a Masters of Fine Arts degree from the Academy of Art University, San Francisco, CA, she owns and operates "Betsy Popp - Fine Art Gallery" in Townsend, WI.

For nearly 20 years, Betsy has instructed adult studio art courses. She has taught art and been artist in residence throughout the country including Northeast Wisconsin Technical College, Green Bay, Nicolet College, Rhinelander, WI, and Upper Iowa University. Her work embraces being "Artist in Residence" in National Parks across the country, including Grand Canyon, AZ, the Everglades, FL, Acadia, ME, the Badlands, SD, Pictured Rocks National Lakeshore and Porcupine Mountain Wilderness Area. Betsy's work is in the collection of these National Parks and other private collections both nationally and internationally.

If you have any questions about the class, contact Betsy Popp at betsypopp@gmail.com.

Jan Jensen 2 Day Chip Carving Class

Thursday & Friday, May 4 & 5, 2023

\$75 (\$85 for nonclubmembers) for 2 days plus material cost.



Old World Chip Carving for the beginner and more experienced carver. Learn to do it with 3 easy cuts! Glue the pattern on without having to do any drawing and start carving right away! First, do a practice piece to learn the technique of Old World chip carving. Students may then choose to carve a beautiful design on a single or two-deck card box, a single recipe box, a napkin holder, a picture frame, or a trivet. Jan Jensen's book, "Blue Ribbon Chip Carving" will also be available with complete instructions and many patterns. Students will need a chip carving knife (available for purchase), a light, and magnifying glasses (if needed).



Woodcarving & Woodburning Classes

Carving & Pyrography Classes held at the Oshkosh Senior Center (OSC)

200 North Campbell Road, Oshkosh, WI tel: (920) 232-5311

Handtool Carving & Woodburning in the South Building; Power Carving in the North (Woodshop).

Monday Power Carving In OSC Woodshop Has Returned Power Carving allowed with dust collector! - Gene Bengel

Bring your own carving projects to work on with others. Bring your power carvers & dust collectors or your hand tools. Gene will be available to guide you. Safety Training required for use of shop machines otherwise bench pass. Machine assistance by monitor will be available.

The Oshkosh Senior Center Woodshop has a new bandsaw! Bandsaws, miter saws, various sanders, drill press, scroll saws available to those with safety training. Monitors can also use resaw bandsaw, table saw, jointer and planer to help you with your project.

Mondays, December 5-19, 2022

Time: 8:00 a.m. to Noon

Cost: \$30 Oshkosh Resident / \$35 Nonresident (3 week session)

Limited enrollment. Maximum 10.

Gene Bengel - December Handtool Woodcarving Class

This carving class is open to anyone who would like to refresh their skills or work on completing their carving projects or starting a new one. Tools are available to beginners; reserve set at registration. Master Carver Gene Bengel is available to guide you with your project.



Mondays, December 5-19 from 1:00 p.m. to 3:00 p.m.

Cost: \$15 Oshkosh Resident / \$20 Nonresident

Enrollment Min/max: 5/12

Beginner Carvers welcome!

*Carving & Pyrography Classes held at the Oshkosh Senior Center (OSC)
200 North Campbell Road, Oshkosh, WI tel: (920) 232-5311*

**Goheen & Krummick
Panda Woodcarving Class
Thursdays in January 10am - Noon**

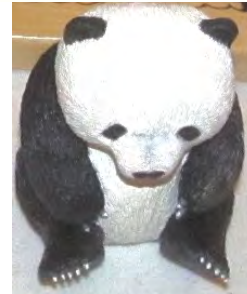
During this five week class students will carve a 3" x 4" Panda from basswood using a combination of hand & power tools (Dremel).

This class focuses upon learning texturing techniques, facial expressions and painting. Base is included.

Students should bring dust collector and Dremel (or similar) rotary power tool. Limited number of Dremels may be reserved.



Panda Carving Class: Thursdays January 5 - February 2, 2023
Class size will be a minimum of 3; maximum of 10.
Cost: \$40 Oshkosh Resident / \$45 Nonresident;
Registration is open; closes December 30, 2022.
Skill Level: Beginner to Advanced



**Richeson & Krummick Pyrography Class
*Snowy Owl***

*Thursdays January 5-26, 2023
1 - 3 pm*

Cost: \$20 Oshkosh Resident / \$25 NR

This 4 week class will teach skills for burning a white bird on a moonlit night. Contrast of dark of night versus the light of the bird. Focus on features such as eyes and talons. 8" x 10" Baltic Birch Plywood included.



Woodcarving & Woodburning Classes

Carving & Pyrography Classes held at the Oshkosh Senior Center (OSC)

200 North Campbell Road, Oshkosh, WI tel: (920) 232-5311

Handtool Carving & Woodburning in the South Building; Power Carving in the North (Woodshop).

Woodshop Guided Hours - Two Sessions Wednesdays

2 1/2 hour woodshop time slots when you may use machines to work on your own projects.

Experienced volunteer woodworkers supply support as needed.

Each session costs \$5 Oshkosh Resident or \$6.50 for Nonresidents.

Wednesday Morning Session 9-11:30 am is walk in or pre-register;

Afternoon session Noon - 2:30 pm is pre-registration only.

Prerequisite: Machine Safety Training.

Woodshop Open House January 26, 2023

Come visit the Oshkosh Senior Center Woodshop Open House from 1 - 3 p.m. on Thursday, January 26, 2023. Come see what kinds of projects Senior Center woodcarvers and woodworkers have been doing. Free tour! You do not have to be an Oshkosh resident. This is the finest senior center woodshop in the country.

The Oshkosh Senior Center Woodshop is available to all people ages 55 and older. There is a small fee differential for Oshkosh residences and non-residents. Woodshop machine users need Machine Safety Training which is good for a year & offered monthly for a nominal cost.

Come tour the shop and ask questions of the Woodshop Leaders who will be happy to chat!



Roadtrip Woodcarving Retreats, Workshops & Seminars

The Clearing Folk Art School 12171 Garrett Bay Road, Ellison Bay WI 54210
Week Long Residential Classes on a 128 acre campus in western Door County.
January 9, 2023 One Day Class in making Portable Vise Cost: \$70 including materials

North House Folk School, 500 W Hwy 61, Grand Marais, Minnesota

Automata: Mechanical Marvels in Wood

the art of making wooden machines & mechanisms that make things move.

January 15-19, 2023, 9 a.m. - 5 p.m.

Class Cost: \$500 plus \$85 material fee. Materials fee includes a basic kit with templates for gears.

Skill Level: Students should have basic wood shop experience coming into this class.

Instructor: Cecelia Schiller

Cranks wind, gears turn, dragons chomp, and birds fly. Welcome to the whimsical world of automata: simple wooden machines that delight and amaze. Starting with the design process in cardboard, students will learn mechanical principles by creating simple cams and levers. Students will cut, drill, and assemble their projects, as well as design and craft the figure, animal, or (insert your imagination here) that surprises and delights viewers when it comes to life with the turn of a crank.

For more information: <https://www.campusce.net/nhfs/>

23rd Annual Snow Daze Carve In

Loyal Order of Moose Lodge, 1300 3rd Street, N., Waite Park MN 56387

Sponsored by Central Minnesota Woodcarver's Association (MNWA) of St. Cloud, MN

April 28-30, 2023 2-5 Friday; 8-5 Saturday & 8-4 Sunday Cost: \$100 includes lunch + Class fee

11 Instructors

Contact them by email at centralmnwoodcarvers@gmail.com and they will forward you a learning seminar booklet or you may also contact Wayne Nicoloff - Show Chairperson (612) 750- 8716.

The Doane Experience, Doane University, 1014 Boswell Avenue, Crete, Nebraska

46th Annual week long residential woodcarving classes on the campus of Doane University

sponsored by the Mid-America Woodcarvers Association

June 3 - 9, 2023 (February 1, 2023 class descriptions will be sent out and registration begins)

Classes are offered for beginner, intermediate, and advanced carvers. Click on link for mailing list.

Marc Adams School of Woodworking

5504 East 500 North Franklin, Indiana 46131

Carving in the Style of Grinling Gibbons:

Foliage Carving With Alexander Grabovetskiy

July 10-14, 2023 5 days Instruction 8-5 pm;

Cost: \$980 includes material fee.

Registration Begins December 1, 2022

<https://www.marcadams.com/workshop/carving-grinling-gibbons-foilage-grabovetskiy/>



Also, Grabovetskiy teaches "Fundamentals of Traditional Carving" April 17-21, 2023 Cost: \$995 at Marc Adams. For on line courses go to: <https://schoolofwoodcarving.com>

*Places to Go Carving: Appleton, Berlin, Fond du Lac ,
Scandinavia, Oshkosh, Green Bay, Princeton, Waupaca, Wausau*

Thompson Center on Lourdes (TCoL), at St. Bernadette Center, 2331 E. Lourdes Drive, **Appleton**, WI

Re-opened!

Room 209 at South Building (St. Bernadette School), (door by elevator).

Fridays, 9:00 a.m. to noon - Cost: \$2 daily fee. All ages.

New carvers are welcome! You must register ahead of time(920) 939-3088.

Berlin Senior Center, 142 Water St., **Berlin**, WI 54923 (920) 361-5422

Wednesdays, 9:00 a.m. to Noon - Cost: Free.

We are growing; we now typically have about 12 people woodcarving.

Fond du Lac Senior Center Woodcarving Club, 151 East 1st Street, Fond du Lac, WI 54935

tel: (920)322-3630, Mondays, 9:00 a.m. - 11:30 a.m.

Yearly membership (age 50+) is \$10. New members always welcome.

Call to register (920) 322-3630.

ADRC Woodcarvers Group (Aging & Disability Resource Center of Brown County)

300 S. Adams Street, **Green Bay**, Wisconsin, Tuesdays, 8:30 a.m. to 10:30 a.m. - Cost \$2/day

Bring hand tools (no power allowed), wood & project e.g. caricature, chip carving, bark, fish, animals, holiday, etc. No classes, but experienced carvers will help re: tools, sharpening, painting, etc.

Iola Chippers & Sippers, Scandihaus Coffee Shop, 280 N. Main St., **Scandinavia**, WI

Tuesdays, Noon - 3:00 p.m.

No Fee. Informal group. All skill levels. New carvers welcome.

Oshkosh Seniors Center (OSC), North Building Woodshop, tel: (920) 232-5311

200 North Campbell Road, **Oshkosh**, Wisconsin

Woodshop safety training required for machine use in woodshop. (See Current newsletter).

Woodshop has Guided Hours to work on projects in woodshop on Wednesdays.

Classes offered in both Woodshop (North) and South Bldg. See Newsletter.

Princeton Carvers, American Legion, 853 W. Main Street, **Princeton**, WI

Tuesdays, 8-11 a.m. - Cost: \$2 daily donation to the Legion.

An informal group of 4-6 people meet Tuesdays to carve and woodburn. New carvers welcome.

Waupaca Senior Center , 407 School Street, **Waupaca**, WI (715) 258-4437

Wednesdays 8:00 a.m. to 1:00 p.m. Enter at School Street entrance.

Yearly membership (age 55+) is \$15 -\$20 depending on residence. Waupaca

Woodcarving Club plus Senior Center carvers, typically 20-25 people meet.

New carvers welcome.

Wausau Area Carvers, Forest Park Village, 2901 N. 7th St., Wausau, WI

(South side of Building, Ground Level; door is marked "Legacy Woodworking Academy")

Tuesdays 10 a.m. to 1 p.m.; Thursdays 5:30 - 8:30 p.m.

Contact Cheryl Ruplinger at cherriruplinger@gmail.com

Woodcarving Annual Show Calendar

2023 Southwest Florida Wood Art Exposition & Competition

Charlotte Harbor Event & Conference Center, 75 Taylor Street, Punta Gorda, Florida

January 6-7, 2023

2 Day woodcarving & woodturning show & competition, tool & wood vendors.

For details & entry forms see: <https://flwoodartexpo.com>

37th Annual Rio Grande Valley Woodcarvers Show & Competition

Nomad Shrine Club, 1044 W. Nolana Loop, Pharr, Texas

January 20-21, 2023 Friday & Saturday 10am -4 pm

Admission: \$5

For details contact Dennis Horstman dhorstman17@gmail.org

www.rgvwoodcarvers.org

32th Annual Desert Woodcarving Show & Sale sponsored by Grand Canyon State Woodcarvers

A Judged Wood Sculpture Competition

Open to the public & all Carvers, Fine Woodworkers and Wood Turners.

Mesa Centennial Hall, 201 N. Center Street, Mesa, AZ

February 25-26, 2023 Saturday 9 am -4 pm; Sunday 10 am - 4 pm.

Admission: \$10 for both days; Free Parking

For more information: <http://www.desertwoodcarvingshow.com>

Karve In 7 K

Westby Elementary School, 122 Nelson Street, **Westby**, Wisconsin

Saturday, April 22, 2023, 10:00 am to 4:00 pm.

Free Admission

Contact John Sutton (608) 634-4396; lbarnfarms@gmail.com

The Annual Kettle Karvers Klub Woodcarving Show, Competition & Sale

Sunday, April 23, 2023, 9:00 am to 4:00 pm.

Emil Mazey Hall, 5425 Superior Avenue, **Sheboygan**, WI

Contact Bob Lawrence (920) 458-4947; bob.kettlekarvers@att.net

Annual Oshkosh Bird Fest

Saturday, May 6, 2023, 6:00 am to Noon

Menominee Park, **Oshkosh**, WI

Contact: <http://www.oshkoshbirdfest.com>

The 47th Annual Mid-Wisconsin Chippers Woodcarving Show, Competition & Sale

"The Oldest Annual Woodcarving Show in the State of Wisconsin"

Sunday, May 7, 2023, 9:00 am to 4:00 pm. Admission: \$5 Age 12 & under free

The Oshkosh Convention Center, 2 North Main St., **Oshkosh**, WI

between the Leach Amphitheater & the Best Western Premier Waterfront Hotel.

Registration Betsy Popp - Leaping White Tailed Buck Class

A six day class - Thursday, Friday, Saturday for two spaced apart weeks. Maximum - 12 students

Dates: April 27, 28, 29 & May 11, 12, 13 2023 Time: 8:00 a.m. to 5:00 p.m. with one hour lunch break.

Where: St. Marks Evangelical Lutheran Church Cost: \$225.00 (Mid-Wis. Chippers Club Members)
 140 S. Green Bay Rd. \$235.00 (Nonmembers)
 Neenah, WI Students should bring a lunch (fast food nearby too).

Includes: your choice one cutout deer & antlers, eyes, reference photos, pattern packet, putties & paints. Extra Cutouts are available: \$35 each, paid with registration deposit. Cutouts will be from butternut wood.

Skill level is more advanced, but instructor will work with any student no matter the level. Power carving is advised, as is roughing out the buck in advance of the class time; students **will need a dust collector**. Students may carve with hand tools alone, but may find it hard to keep up. Students should bring their regular carving tools/bits/wood burner/paint brushes/dust collector.

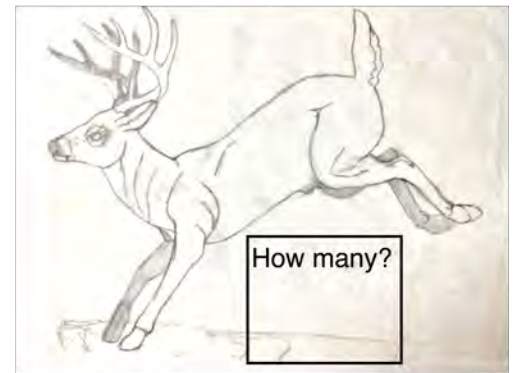
Indicate which cutout you want below & # of extras, if any. Class Fee includes one; extras are \$35@.



Buck beginning to take off.



Buck leaping.



Buck landing from jump.

Name:
 (please print)
 Address:

Phone: E-mail:

Payment of Class Fee Deposit (\$100 + \$35 each for extra cutouts) at time of registration.
 Balance due March 15, 2023. Cutouts will be available with directions at March 5, 2023
 Chippers Meeting: 1:30 pm at Gloria Dei Lutheran Church, 1140 Tullar Road, Neenah, WI.

Registration Deadline: when class is full or February 15th. Amount enclosed: \$_____.

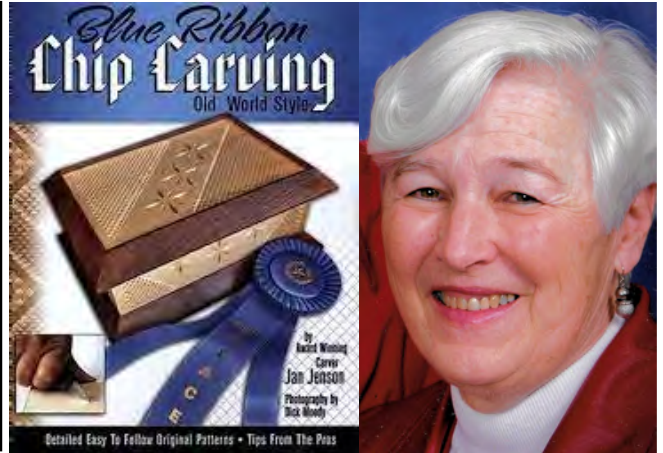
Make check payable to: MID WIS. Chippers. On check note: "Popp Buck"

Mail to: Bill Tuchscherer
 714 Coolidge St.
 Neenah, W I. 54956

Registration for Jan Jenson - Chip Carving Class

A two day class - Thursday & Friday May 4 & 5, 2023 Maximum - 12 students

Dates: May 4 & 5, 2023
Time: 9:00 a.m. to 5:00 p.m.
Where: St. Marks Evangelical Lutheran Church
140 S. Green Bay Rd., Neenah, WI
Cost: \$75.00 Mid-Wis. Chippers Club Member
\$85.00 nonmembers
+ additional Material Fee (see below)
Skill Level: Beginners to Advanced



Material Fee: \$12-45 (average cost is \$12-26) paid to instructor at class.

The class fee includes a practice board. Material Fee varies depending upon the project chosen by student. Available projects include: 1-2 deck card box; napkin holder; picture frame; trivet; single recipe box.

Available for sale will be Jan's two print chip carving books, *Blue Ribbon Chip Carving Old World Style*, and a flash drive book. Chip carving knives will be available for \$22-\$38.

Students will need a chip carving knife, a light, and optionally bench hook, carving glove and magnifying glasses.

Students should bring a lunch.

Name:
(please print)
Address:

Phone:
E-mail:

Payment of Class Fee (\$75.00) at time of registration.
Registration Deadline: when class is full.

Make check payable to: MID WIS. Chippers. On check note: "Jenson Chip"

Mail to: Bill Tuchscherer
714 Coolidge St.
Neenah, W I. 54956

BE ON THE SPRING SHOW FLOORPLAN MAP BY REGISTERING EARLY!

2023 Mid-Wisconsin Chippers (MWC) 47th Annual "Artistry in Wood"

Woodcarving Show, Competition & Sale - Sunday, May 7, 2023 - 9:00 am to 4:00 pm

The Oshkosh Convention Center, 2 North Main Street, Oshkosh, Wisconsin

Downtown Across from Best Western Premier Waterfront Hotel & Ground Round Restaurant. Ask for Special Hotel Rate!

Over 500,000 people live in a 25 mile radius of Oshkosh!

Mid-Wis. Chippers Show Table Registration Form

(Judging Entries must be registered on Show Day from 6:45 to 8 a.m.

Judging starts promptly at 8:00.)

Name: _____

Address: _____ City: _____

State: _____ Zip: _____ Phone: (_____) _____

Email: _____

Join/renew membership in the Mid-Wis. Chippers only \$20 (Sep-Aug): New Renew \$_____

Please reserve the following show tables (You must have a Show Table to Enter the Competition):

Mid-Wis. Chippers Club Member _____ Tables @ \$20.00 (\$25 after January 1, 2023). \$_____

Are you sharing a Table (See page 2)? If so with whom? _____

Non-Member Artist _____ Tables @ \$25.00 (\$30 after January 1, 2023).....\$_____

Are you sharing a Table (See page 2)? If so with whom? _____

Club Tables _____ @ \$30.00 (\$35 after January 1, 2023).....\$_____

(Only one entry per participant at Club Tables.) List Club Table Participants on page 2.

Youth Group Table (under age 18) No Charge; Name of Group _____

Attach list of names and ages of youth.

Competing Youth (under age 18), there is no cost, but indicate Sponsor for Judging.

Sponsor: _____ (See page 2 for more information.)

Commercial Tables _____ Tables @ \$30 (\$35 @ after January 1, 2023).....\$_____

Special Needs/Comments: _____

I, _____, will display my own work. I will not hold the Mid- Wisconsin Chippers Woodcarving Club or The Oshkosh Convention Center/Best Western Premier responsible for loss or damage to my work. Enclosed is check # _____ in the amount of \$_____.

Signature: _____ Date: _____

Important: Return this entire form with your fee*. Mail by April 1, 2023 (April 15 final deadline for late registration.)

Make checks payable to Mid-Wisconsin Chippers.

*** Fees current as of May 1, 2022.**

Mail to: Paul Wolters, 1273 Meadow Lane, Neenah, WI 54956

Please print and return entire form.

Keep a copy for your records.

Rev.: 4/15/2022

TABLE SET UP BEGINS AT 7:00 A.M.

TABLES MUST REMAIN SET UP FROM 9:00 A.M. UNTIL 4:00 P.M.,

NO EARLY PACK UP.

- Table Fee includes admission for registrant & one helper (two total), except Club Table admission is only for participants (six total).
- **Sharing a non-club Table** - Each participant pays the full table fee & has 4 entries. (Some share a table for their convenience or because they are only bringing a few items for display.)

Club Table Participants: (Special club rate, only one entry for each participant; Limit 6 for Judging):

a) _____ d) _____
b) _____ e) _____
c) _____ f) _____

- *****
- **Youth Group Table** - Members of a recognized Youth Group are encouraged to exhibit their carvings at our show by registering for our no charge Youth Group Table. We require a list of participants, ages & organization name and city.
 - **Competing Youth** may enter their carvings through the Youth Group Table or through a Sponsor such as a Club Table or Artist Table whether member or nonmember. The competition fee is waived for Youth under the age of 18 with a maximum of two (2) competition entries per individual. Carvings are required to remain on display at the Sponsor Table throughout the Show except for the time of Judging.

Current Skill Levels of Competition: Youth Novice Intermediate Open Masters

Current Competition Categories: (See Judging Entry Form for rules & number of entries allowed.)

- | | | |
|--------------------|-------------------------|--|
| 1. Waterfowl | 10. Human | 19. Interpretive/Stylized |
| 2. Song Birds | 11. Relief | 20. Carved Canes & Walking Sticks |
| 3. Game Birds | 12. Group* | 21. Pyrography |
| 4. Shore Birds | 13. Mythical | 22. Pyrography With Color |
| 5. Birds of Prey | 14. Santas | 23. Pyrography - Human (New Category) |
| 6. All other Birds | 15. Caricature | 24. Gourds, Carved and/or Burned |
| 7. Fish | 16. Amphibians/Reptiles | 25. Intarsia |
| 8. Marine Mammals | 17. Religious | 26. Bark Carving |
| 9. Mammals | 18. Chip Carving | 27. Misc.(Any other woodcarving) |

*A group is two or more subjects on one base, e.g. two adult male chickadees on a single base is eligible for either the group category or the song bird category.

Note: Entry officials may override the choice of category.