



WHITTLE BITS AND PIECES

Mid-Wisconsin Chippers Newsletter for April 2023

Club President : Tim Gosz Vice-President: Duane Foote
 Treasurer: Bill Tuchscherer Secretary: Cedric Richeson
 Annual Show Director: Paul Wolters

Mid-Wisconsin Chippers Woodcarving Club (MWC) Board

Barb Behm	Lee Belanger	Dick Krummick	Gene Bengel
Steve Binder	Rodney Manthey	Chris Rigotti	plus the Officers

Visit our Website at: <http://midwisconsinchippers.weebly.com/>

Welcome to our New Member Marty Paulik!

Carving Reliefs Presentation

Low, High & Pierced

by Gene Bengel

Sunday, April 5th!

Gloria Dei Lutheran Church, 1140 Tullar Road, Neenah, Wisconsin
 Board meeting 12:30 p.m. General Meeting 1:30 p.m. Library Open.

*The Chippers Club logo:
 "The carver on the stool"
 was created by Bob Yancey
 MWC Club President
 from 1984 - 1985.*

Club Webmasters:
 Josie Hartzke & Jackie Silva

Librarians:
 John Goheen & Duane Foote

**REGISTER NOW !
 2023**

**CHIPPERS SHOW
 66 TABLES
 REGISTERED**

RAFFLE DONATIONS

**Friendship Cane
 Turn In!**

RAFFLE DONATIONS

Show Preview

RAFFLE DONATIONS

Elections

JUDGING

PRE-REGISTRATION

**NORTH
 SNACK
 HOST**

DEBRA TERRY

Ben Hunt Totem Pole Carving in '50s.
 Visit his Museum in Hales Corner, WI.



Table of Contents

Meeting Calendar, Location,.....	Page 2
March Club Report & Membership News.....	Page 3
Club Election Notice.....	Page 3
Library News.....	Page 4
Chippers Club Shirt Order	Page 5
Show 'N Tell from March 5th Meeting.....	Pages 6-8
Bucket Raffle Donations.....	Page 8
Choosing & Applying Protective Coatings by Jeffrey Becker.....	Page 9
MWC 2023 Show News.....	Page 10-14
White Tailed Buck Carving Class - Betsy Popp.....	Page 15
Kettle Karvers Klub Show Returns (30th Annual Show).....	Page 16
Chip Carving Class - Jan Jenson.....	Page 16
Gordon Stiller Carving Award Wisconsin Maritime Museum Contest.....	Page 17
Rock River Valley Woodcarving Club (Janesville) Show.....	Page 18
Capital Area Carvers of Wisconsin (CACW) 32nd Annual Show.....	Page 19
Josh Guge Loggerhead Shrike Class.....	Page 20
Oshkosh Senior Center Woodshop News & Classes.....	Pages 21-23
Roadtrip Woodcarving Retreats, Workshops & Seminars.....	Page 24
Places to Go Carving in Mid-Wisconsin	Page 25
Annual Woodcarving Shows List (Updated).....	Page 26
Form for CACW Show.....	Page 27
Chippers Show Judging Rules and Registration Form.....	Pages 28-29

Regular Club Meetings

The Mid. Wis. Chippers Club meets at Gloria Dei Lutheran Church, 1140 Tullar Road, Neenah, Wis. (by Neenah High School) on the first Sunday of each month (except as noted.)

Meetings are at 1:30 p.m. (except our December potluck with a noon setup & lunch at 1:00 p.m.)

Board meetings are at 12:30 p.m. (No Board meeting in December.)

2022-2023 Club Meeting Calendar

- ✓ August 28 *Show 'n Tell (or "How I spent my summer vacation")*
- ✓ October 2 *Power Carving Demonstration Part 1 by Chris Rigotti, Steve Binder & Gene Bengel
Flexible shaft, micromotor, rotary and reciprocating tools plus dust collectors
plus Betsy Popp 2023 Buck Class Preview*
- ✓ November 13 *Power Carving Demonstration Part 2 by Keith Melzer & Patrick Pelkey
Bit shapes, sizes, brands, materials from diamond, steel, ceramic, and ruby to
sanding drums, Attachments for hogging, texturing, both rough and detail work*
- ✓ December 4 *Christmas & Holiday Potluck*
- ✓ February 5 *Creativity, Inspiration & Skill Development Panel Discussion
by Barb Behm, Linda Gomach, Betsy Popp, Virginia Temme*
- ✓ March 5 *Choosing & Applying Protective Coatings to Woodburnings & Carvings by Jeff Becker*
- April 2 *Show Preview, Judging Pre-registration, Friendship Canes, Elections
Relief Carving Demo & Presentation by Gene Bengel (Rescheduled from January)*
- May 7 **47th Annual Show at Oshkosh Convention Center**
- May 21 *Mid-Wis. Chippers Carver Slide Show by Paul Wolters & Annual Show Review*

Membership- Our Club has **80** members including 17 new members in the past 12 months.

The **Mid-Wisconsin** Chippers Woodcarving Club has members from Appleton, Berlin, Clintonville, DePere, Eau Claire, Fish Creek, Fond Du Lac, Fox Crossing, Greenleaf, Hortonville, Kimberly, Larsen, Manitowoc, Menasha, Milton, Neenah, New London, Oshkosh, Pine River, Ripon, South Milwaukee, Townsend, Watertown, Winneconne, Wisconsin Rapids; and Glenview, Illinois.

The Chippers welcome new people to visit & join; they invigorate our Mid-Wis. Chippers Club with their questions, ideas, and talents. Please be an ambassador to help someone else join today.



Suggestion Box

To facilitate communications a Suggestion Box is set out during meetings to collect your ideas, and comments about club matters. The Board will review the submissions.

Do not use this box for payments, e.g. dues, class fees, table registrations, etc.

See Club Treasurer Bill Tuchscherer for payments to ensure proper credit.

March Club Report

The meeting was opened at 1:35 pm by Tim Gosz. Total attendance was 53.

A new club member Marty Paulik was introduced. The Treasurers report was made and approved. It was announced that Elections will be held at April's meeting for President, Treasurer and two at large Board positions. Tim, and Bill will be running for re-election. Lee is stepping down. Rodney was away, but is expected to run.

Membership interest in placing a club shirt order was noted on a sign up sheet. Interest is sufficient and updated pricing will be obtained and orders solicited. Paul Wolters was treat host. A host is still needed for May. Check with Barb Behm to sign up. Additional items including wood from the Tony Resop estate was available at the March meeting. \$495 was realized for the club at February's silent auction.

After Library Time & Snacks the club held Show 'n Tell and Jeffrey Becker's Presentation on Choosing & Applying Protective Coatings. The meeting ended at about 3:30 and volunteers helped pack up the library and place the room in order.

Elections for Mid Wis. Chippers Board in April

The pandemic threw our staggered board election schedule into turmoil, but we are working out of the chaos.

The following Board members' terms are coming to an end at the close of this carving year in August.

President - Tim Gosz
Treasurer - Bill Tuchscherer
Board member - Lee Belanger
Board member - Rodney Manthey

The elections are held in April, but newly elected members assume their duties beginning with the August meeting to ensure an orderly transition in alignment with the club year which runs from August to August. Tim & Bill are running for re-election; Lee is retiring; Rodney ??; all members are welcome to run.

MID-WIS. CHIPPERS CLUB LIBRARY NEWS

LIBRARIANS: JOHN GOHEEN & DUANE FOOTE



The club has over 40 casts of birds and fish which may be checked out. They are cataloged. A listing will be placed inside the Club Cabinet Door and added to our online catalog. To examine or check out a cast see one of the Librarians who will retrieve it for you.

The casts and quantities include:

Songbirds

Barn Swallow
Bluebirds (3)
Bluejays (2)
Cardinals (2; one is large)
Chickadees (6) includes one
Muehlmatt Chickadee
& 2 baby chickadees (tail up
& tail down)
Goldfinch (1)
Hummingbirds (one pair)
Nuthatch (1)
Oriole (3)

Other Birds

Puffin

Other Casts

Easy Eyes Stick

Birds of Prey

Eagle
Eagle Head
Merlin Falcon
Owls (3) Great Horned, Screech & Saw-Whet
Red Tailed Hawk (2)

Waterfowl & Shorebirds

Bluewing Teal
Canvasback Duck (Bill only)
Kingfisher (1/2 size)
Common Merganser Duck
Pintail Duck (Bill only)

Fish & Sea life

Bluegill
Walleye
Sea Turtle

Also, plans are afoot for late spring arrival of an additional new & improved book cabinet to hold our growing library.

We have lots of reference materials.

Club members! Look at our website for the carving library catalog. Search our club library book & magazine holdings by *category*, *title* **or** *author* on-line at: <http://midwisconsinchippers.weebly.com/>

Just bring your list to the meeting, retrieve the wanted books from their bins on the tables and check them out. See a librarian for assistance.

CLUB LOGO SHIRTS FOR SALE!
TAKING ORDERS & PAYMENT AT APRIL MEETING!!!
LOGOS PRINTED ON FRONT & BACK AS SHOWN

Mens Gildan Short Sleeve Polo (NO POCKET):

https://catalog.companycasuals.com/p/574_SportGrey#?doScrollToGrid=true

S-XL = \$24; 2XL = \$28; 3XL = \$30; 4XL = \$32

Mens Port & Company Short Sleeve Polo (WITH POCKET):

https://catalog.companycasuals.com/p/5728_AthlHthr?text=kp55p

S-XL = \$23; 2XL = \$25; 3XL = \$29; 4XL = \$31

Mens Port Authority Cotton Long Sleeve Polo:

https://catalog.companycasuals.com/p/8400_OxfordHthr#?doScrollToGrid=true

XS-XL = \$39; 2XL = \$41; 3XL = \$45; 4XL = \$47

Mens Performance Short Sleeve Polo:

https://catalog.companycasuals.com/p/3859_TrueNavy?text=st650

XS-XL = \$34; 2XL = \$36; 3XL = \$40; 4XL = \$42

Mens Performance Long Sleeve Polo:

https://catalog.companycasuals.com/p/4048_TrueNavy#?doScrollToGrid=true

XS-XL = \$38; 2XL = \$40; 3XL = \$44; 4XL = \$46

Ladies Cotton Short Sleeve Polo:

https://catalog.companycasuals.com/p/6458_AthlHthr#?doScrollToGrid=true

XS-XL = \$25; 2XL = \$27; 3XL = \$31; 4XL = \$33

Ladies Cotton Blend Long Sleeve Polo:

https://catalog.companycasuals.com/p/1362_Royal?text=l500ls

XS-XL = \$37; 2XL = \$39; 3XL = \$43; 4XL = \$45

Go to the links to see colors and shirt specifications.
Bring a check or cash to the April meeting & fill order form there. Shirts should be delivered at show!

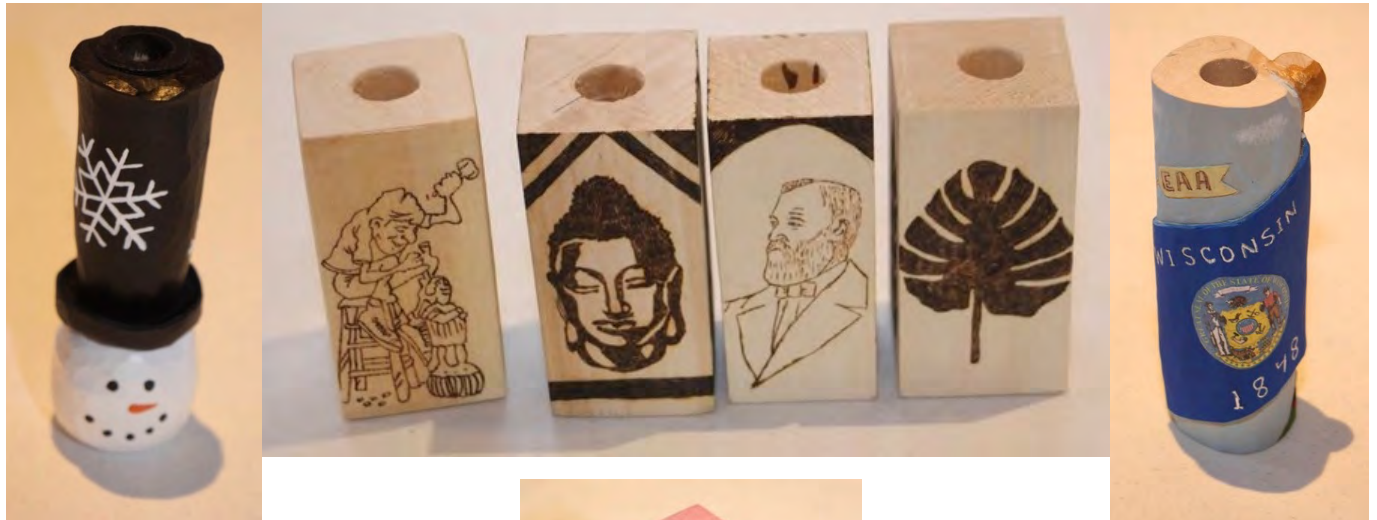


Depending on Shirt color, the logos will be White or Brown.



Show 'N Tell Photos - March 5th Meeting

The Friendship Cane Blocks are coming in; Last chance to drop them off at April's meeting!



Ahmad Pima woodburned three Friendship blocks with religious, leaves, and Presidents motifs.



Carol Brawn made two blocks with a happy snowman and Valentine theme.



Gene Bengel actually addressed the Cane's Wisconsin theme with EAA, State flag & a farm scene.

Thanks to everyone who contributed a Friendship Cane block to our annual fundraising project for the Club!

Our club Friendship canes are a staple in our Show Raffle and very popular with attendees.



Jack Kumm's Friendship Cane block depicted the club logo in a Chippers block finished with a glossy 3X Krylon coating.



Who carved the Syrup cane block? The answer to last month's mystery is Jerry Lindow! Thanks Jerry!

Show 'N Tell Photos - March 5th Meeting

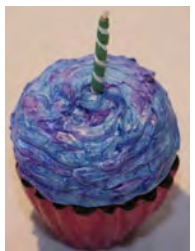


This nice relief carving of a lighthouse and the related carving of the lighthouse keeper were made by Lee Belanger. Lee used a Lora Irish pattern for the lighthouse and Wood Carving Illustrated provided a Sea Captain pattern.

Birds of a feather flock together and our flock of Chipper artists have sculpted some fine feathered flyers.

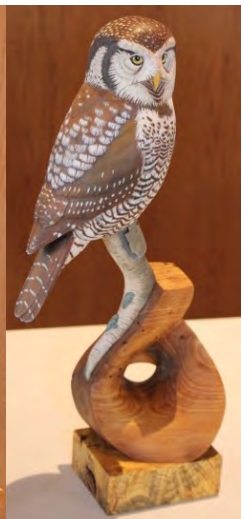


Pat Pelkey takes the cake having carved and donated 702 comfort birds, the latest to Milwaukee Children's Hospital. Pat's cake is carved from butternut.



Dick Young (left) showed his wood duck. Dick began carving as a duck man through his connections with Fox Valley Tech if I am not mistaken.

Bill Wright (right) brought his owl. Bill used oil paint.



Show 'N Tell Photos - March 5th Meeting



A scarecrow from carving Wiz Richard Young.



Bill Tuchscher (r) shows his latest work in progress, a pyrographic rendering of his doctor's father.

Below Bill showed some finishing touches on his collaboration with Paul Wolters. The glasses are made of cardboard with pour on epoxy lens.



I missed one; who's bird is this?



2023 CHIPPERS SHOW BUCKET RAFFLE PRIZE DONATIONS

Donate items for our 2023 Show Bucket Raffle at the April club meeting!

The Club needs donated items for our Big Show Fund Raiser - The Bucket Raffle.

Woodcarving related items are highly desired, but other interesting and fun treasures are valued too. The variety makes it a fun time for everyone at our show. Donate now; the show is only 35 days after our April 2nd meeting (No Fooling!). Bring them to the meeting and give them to one of the raffle coordinators Duane Foote or Steve Noll. *If you need an item picked up, call Duane Foote (920) 369-0327 or Sara Richards (210) 863-2185.*

Items donated so far include: 4 carvings, a birdhouse, squirrel feeder, wine, books, Xacto knife set, Packer flag, Sander& bits, tower of tape; afghan, a coin proof set, Indian bust, candles.

In the past, donations have included:

strops, bench hooks, wood cars, a chainsawed raccoon, handmade baskets, study casts, carving knives, coin collection, Packer football, used tool sets, gift baskets, hobby horse, pyrographic art, airbrush set, woodburned art, ceramic art, art prints, gift baskets, bird feeders, walking stick blanks, cutouts, decoys, gift certificates.

Choosing & Applying Protective Coatings to Wood Carvings & Pyrography

by Jeffrey Becker

In March Jeff Becker delivered the goods on protecting woodcarvings and woodburnings using finishes. The audience raised great questions and Jeff provided many helpful tips. One great new product on the market is clear gesso as a sealant, but this product is not good for a final protective coating. Mayonnaise has a role in removing the white water rings from shellaced table tops.



There was a large turnout to hear Jeff share his knowledge and experience with various protective coatings. Jeff discussed the advantages and disadvantages of finishes as well as different methods of application. With detailed carvings often dabbing is the best method to avoid filling in the intricate designs as can often happen with brush on application.



LAST CHANCE TO REGISTER!

2023 MID-WISCONSIN CHIPPERS WOODCARVING SHOW, SALE & COMPETITION A GREAT SHOW - SUNDAY MAY 7TH

APRIL 2, 2022 CLUB MEETING SHOW PRE-REGISTRATION

Please read! - Pre-Registration for the Competition

If you are entering carvings/pyrography to be judged,

please fill out a Judging Entry Form & bring to the April Meeting.

(If you have already sent your form to Paul & nothing has changed, no need,

but if you have changes **or** have not sent in an entry, *please do so now.*

This will help speed registration on show day.

If you cannot make the April meeting, mail your entry form to Paul now.

A copy of the Entry Form & The Rules is attached to this newsletter.

You may make any changes to your entries on Show Day.

Show Day Check In Process

Prior to Show Day, you will be contacted with your Table Number (Plus a letter designation **if** you are sharing a table **or** part of a club table).

Your Table Number is very important. It identifies where you will be located **and** it is used in the judging registration process.

On Show Day you may arrive to set up beginning at 6:30 am.

First, go to the Show Registration table on the south (river) side of the convention center and get your exhibitor or volunteer wristband and show program with the table locations).

If you have a helper, they will get an exhibitor wristband too.

The Show Registration table is inside the hallway from the building entrance that is adjacent the east side parking lot (it is on the river between the Leach amphitheater and the Convention Center.)

Second, After getting your wristband, you have until 8 am sharp to enter your carvings at the Judging Registration Tables in the hallway on the side of the convention center exhibition hall facing the hotel (same area as in 2022). There will be four lines with registrars receiving carvings at two tables. Each line will be for a range of table numbers.

Go to the line designated for your table number! The registrar will check your entry and receive your carving(s) for placement in the judging area. After your carvings are received, you are done until called to pick them up after judging ends.

All entries for Judging **MUST** be received no later than 8 am.

Judging will start promptly at 8 am.

LAST CHANCE TO REGISTER!
2023 MID-WISCONSIN CHIPPERS
WOODCARVING SHOW, SALE & COMPETITION
A GREAT SHOW - SUNDAY MAY 7TH

APRIL 2, 2022 CLUB MEETING
SHOW NEEDS & VOLUNTEERS

Yard Sign Pick Up
Show Flyer Pick Up
Volunteer Sign Up

Help Wanted

We need people to help with these items:

Show Registration - Need three early birds to help Tim between 6:00 & 9:00 a.m.

Admission - 6 Time slots (one hour each) needed to collect \$ & put on wristbands.

We have 11 time slots (2 people for each hour except the last).

MWChippers Club Table Ambassadors - 1 hour time slots; Sell patches; talk about the club; accept membership applications; accept table registrations for 2023 show & early dues payments.

Trailer Loading & Raffle Teardown - we have a full crew for set up, but need to have a breakdown crew as well. Up to 5 people will make quick work of this task.

Show Constables - One or two people to make sure the venue has been set up correctly.

Helium Balloons for the Show Signs - Someone to obtain these and bring to the show and place on signs & the *Best of* markers.

Vendor Helper - One or two volunteers to offer assistance to vendors, as needed, to transport their wares into the building.

LAST CHANCE TO REGISTER!

2023 MID-WISCONSIN CHIPPERS WOODCARVING SHOW, SALE & COMPETITION A GREAT SHOW - SUNDAY MAY 7TH

Presentations & Demonstrations

- ✓ Texturing Bird Feathers by Ray Claussen
- ✓ Fish Carving by Harold Mohr
- ✓ Making Bird & Fish Cutouts with a Bandsaw by Patrick Pelkey
- ✓ How to Get Started in Woodcarving by Patrick Pelkey
- ✓ Chainsaw Carving by Ken Milbrandt

The Competition

- ✓ 3 Judging Teams: 7 Judges, 3 Recorders & 3 Ribbon Runners
- ✓ 5 Skill Levels: Master, Open, Intermediate, Novice, Youth
- ✓ 28 Categories including a new one: Pyrography - Human
- ✓ 1st - Blue Ribbon; 2nd - Red Ribbon; 3rd - White Ribbon
- ✓ Best of Show and Best of Class Ribbons (Look for the Balloons!)

The Exhibitors & Vendors

- ✓ 80+ carvers & 2022 Best of Show Winner Charlene Lynum
- ✓ 7 vendors: Whittlin' Shack, Good Wood, Chief Books, Badger Blades, The Carving Glove Guy, Woodcraft of Appleton, & the Best Western Food Concession
- ✓ 5 Club Tables from Waupaca, Berlin, Oshkosh, Neenah, Ripon/Princeton; carvers from over a dozen clubs & four states.

LAST CHANCE TO REGISTER!

2023 MID-WISCONSIN CHIPPERS WOODCARVING SHOW, SALE & COMPETITION

The Raffle

- ✓ \$1 per ticket, 6 tickets for \$5, or best deal 📍 30 tickets for \$20
- ✓ Raffle held at 2:30 pm; Do not need to be present to win.
- ✓ Carvings, Friendship Cane, Books, Ceramics, Packer Flag, Tools, & More!

Tickets available at show. Write name & phone # on ticket. Keep ticket stub.

Deposit in bucket for chance on item.

Or Put Your Name, Address & Phone # on our Raffle Log & use your Log # to make it easy.

Collectible Embroidered Carving Patches

- ✓ "Fish Carver" New for this Year!
- ✓ "Myth Carver"
- ✓ "Bird Carver"
- ✓ "MWC Club"

Patches are \$5 each.

Available at:

the Mid-Wis. Chippers Club Table.

Homage
to
Gnome
Carver
Lyle Krause!



LAST CHANCE TO REGISTER!

2023 MID-WISCONSIN CHIPPERS WOODCARVING SHOW, SALE & COMPETITION

Accomodations

On May 7, 2023, the 47th Annual Mid-Wisconsin Chippers Show, Competition & Sale will be held at The Oshkosh Convention Center in downtown Oshkosh, Wisconsin.

Located between the Fox River and Ceape Avenue at 2 North Main Street, Oshkosh, Wisconsin, The Oshkosh Convention Center is connected to The Best Western Premier Waterfront Hotel by an elevated pedestrian bridge that crosses Main Street.

The Best Western Premier Waterfront Hotel offers a special rate of \$109.99 for Chippers Show attendees.

To get this special rate register by April 5, 2023 and request the Mid Wisconsin Chippers Artistry in Wood rate.

The Ground Round Restaurant is located on the street level of the hotel adjacent the river.

(Best Western will also have a food concession with seating available until 2 pm on the Convention concourse (adjacent to our exhibition area) during our event.)

The show theme is: "*Everything you need to get started & grow in Woodcarving.*"

Find out about carving classes, woodcarving events.

Get equipped by vendors for wood, tools, knives, chisels, gouges, thumb guards, woodburners, for various styles of carving and pyrography.

Learn from books, clubs, interesting presentations and educational demonstrations.

Meet dozens of woodcarvers and pyrographers from novices to master craftsmen, amateurs to professional artists.

Our show is an enthusiasm dynamo for wood carving, generating new carvers & woodburners. Learn places to go carve with others. Have fun!

Woodcarvers, pyrographers, a great judged competition for the best woodcarvings, wood sculptures for sale, chainsaw carver, food concession, and the always popular bucket raffle with carvings and a host of interesting, new and handmade items.

We have planned a great fun show for our audience, the carvers, and vendors who make it all happen! We hope to see you in 2023!

Last Chance to Register!

White- Tailed Deer Buck Class



Betsy Popp is teaching a six day butternut carving class of a Wisconsin white tailed buck on April 27-29 & May 11-13 in Neenah. Cost is \$225. See form for details.



Three different poses are available: landing, leaping, and takeoff. Students will receive a cutout of their choice (lower left). The above photos show the cutout after further carving. The antlers will be carved in class separately and added. A beautiful wood sculpture taught by an experienced artist.



Students will choose from 3 different Buck patterns: The Take Off; Leap!; and Touchdown!

The class fee is \$225 for Mid-Wis. Chipper (MDC) members & \$235 for nonmembers including 40+ hours of classtime instruction & carving, one cutout of your choice (both buck & antlers), eyes, a pattern packet, reference photos; putties & paints.

Last day to sign up will be April 8, 2023. Extra cutouts are \$35 each. Class size is limited to 12.

If you have any questions about the class, contact Betsy Popp at betsypopp@gmail.com.

Last Chance to Register!

TWO DAY CHIP CARVING CLASS BY JAN JENSON

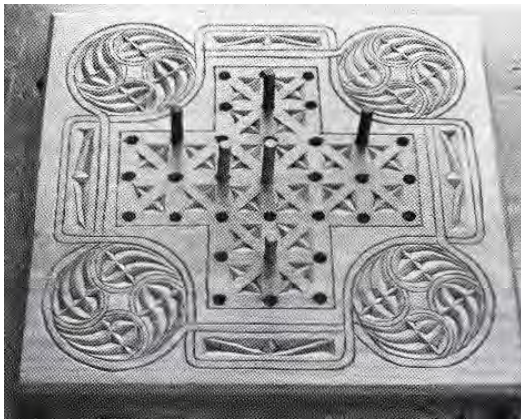
May 4-5 (Thursday & Friday) in Neenah
\$75 (\$85 for nonmembers) plus material cost.

It has been said that if you want to be a better carver, then learn & practise chip carving.

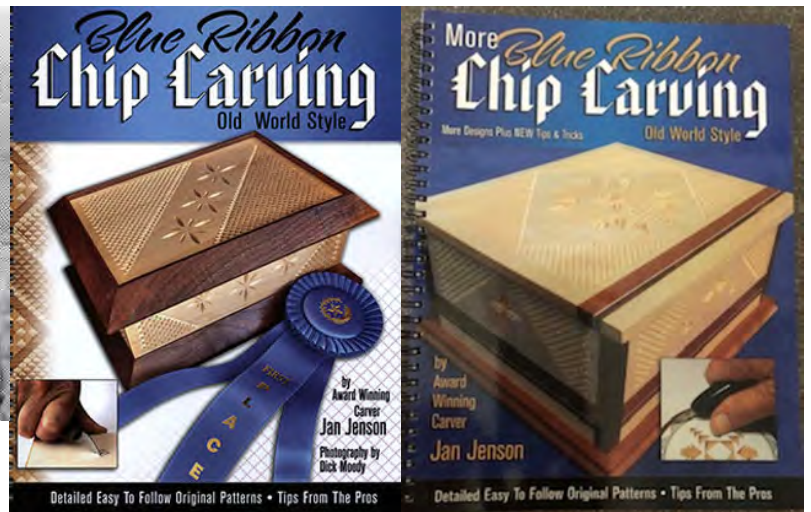
Chip carving uses simple cuts yet it trains the eye and hand to make those cuts perfectly.

Chip carving is a training tool in traditional woodcarving.

Very intricate & pleasing geometric designs create beautiful ornamentation.



Jan Jenson books on right. A chip carved Fox & Geese game board (above) from



THE KETTLE KARVERS SHOW IS BACK!

The Kettle Karvers Klub annual Artistry in Wood Woodcarving & Wood Sculpture Show is on **April 23, 2023 at a new venue in Sheboygan.**

The Kettle Karvers 30th Show is at **Emil Mazey Hall**, 5425 Superior Avenue, Sheboygan, Wisconsin on Sunday, April 23rd from 10:00 a.m. to 4:00 p.m.

The Show includes a **raffle** and **competition**. Donations for the raffle may be made on the show day. Exhibitors cost is \$25 per table. Carvers who sell carvings are responsible for Wisconsin sales tax.

The competition has four skill levels: Novice; Intermediate; Advanced & Masters.

Note: The Kettle Karvers skill placement rules differ from those used by the Chippers.

If you have any questions, please contact Bob Lawrence at (920) 458-4947 or email bob.kettlekarvers@att.net.



**46th Annual Midwestern Model Ships & Boats Contest & Display
May 19-21, 2023
A Nautical Research Guild Associated Contest**

Category V: Nautical Crafts

Models and craft items that are nautically related such as cannons, anchors, figureheads, nautical decorations, maritime carvings (figureheads, fish, water creatures, waterfowl)

Gordon Stiller Best Maritime Carving Award

"Within the category of nautical crafts we're highlighting a call-out for maritime carvings (figureheads, fish, water creatures, waterfowl).

This award is for the single best carved nautical craft or for exceptional wood carving on a ship model.

Deadline for entry is May 1, 2023.

This is a yearly event, so if you are not ready for this year's competition consider next year. Contest details at:

<https://www.wisconsinmaritime.org/programs-and-events/midwestern-model-ship-contest/>

This is the Midwest's largest model contest.

The models will be on display to the public on Saturday and Sunday May 20th & 21st (May 19th is set up).

Museum hours are 9-5; admission is typically \$15.



The Wisconsin Maritime Museum and its Cobia submarine (above).
A past entrant in the Model Contest (right).

17th ANNUAL Show & Sale

Rock River Valley Carvers of Wisconsin, Inc



Saturday, September 9, 2023

9 AM to 4 PM

Featured Carver: **Bud Cunningham**

Free Admission – Donations Welcomed

Raffle, Food Stand

Wood and Tool Vendors.

Spiral Carving Class

Demonstration Carving Cottonwood Bark



Rock County Fair Grounds - Craig Center

1301 Craig Ave, Janesville, WI 53545



For More Information contact

Brad Crandall

608-931-0188

bwkicrandall@gmail.com

or

John Raisbeck

jraisbeck@gmail.com

MARK YOUR CALENDAR!
EXHIBITOR REGISTRATION FORM ATTACHED

**SUNDAY
OCTOBER
29
2023**

**Capital Area Carvers of
Wisconsin
&
Badger Woodturners
32nd Annual Show and Sale**

**OPEN TO THE
PUBLIC
9am
TO
4 pm**

**Over 100
Tables of Art**

**DeForest Area
High School
815 Jefferson Street
DeForest, WI 53532**

**Featured
Carver
Greg Curless**

Free Admission

RAFFLES

CONCESSIONS / FOOD TRUCKS

PEOPLE'S CHOICE AWARDS

WOODTURNING DEMONSTRATIONS

CARVING DEMONSTRATIONS

TURN YOUR OWN PEN

WOOD & TOOL SALES

YE OLDE CARVERS' SHOPPE

CHAIN SAW CARVING

FOR MORE INFORMATION

**WWW.CACW.CLUBEXPRESS.COM
WWW.BWT.CLUBEXPRESS.COM**

**CINDY POTTHAST, 608-712-2989 CYNTHIA.POTTHAST@GMAIL.COM
DAVE HILLER, 608-444-8695 DAVE@DAVEHILLER.COM**

Whittlin' Shack has a Youtube channel
<https://www.youtube.com/@whillockwoodcarving3467/videos>

The Carving Glove Guy has a website with a link to
sharpening Dockyard tools. <https://thecarvinggloveguy.com>

Badger State Blades is a new Wisconsin knife maker with a
website: <https://badgerstateblades.com>

Woodcraft of Appleton, 4731 Michaels
Drive, Appleton, WI has a demonstration
on glue types and uses on Saturday,
April 15th at 1 p.m.
If you aren't glued to filling out your tax
return stop in.

Josh Guge - Loggerhead Shrike Carving & Painting Class

The Loggerhead Shrike is a predatory songbird that eats mice, large insects and small birds. It is 8-10" long with a short hooked black bill. The bird is gray with a black mask, wings and tail with a grayish-white underside. These birds are solitary, hunt in open country, and can be found in Wisconsin. They winter in the south.



Dates:	August 11-14, 2023
Time:	8:00 a.m. to 5:00 p.m.
Where:	St. Marks Lutheran Church 140 S. Green Bay Rd. Neenah, WI
Cost:	\$400.00 + Supply Fee

Students will create a full detailed loggerhead shrike wood carving throughout the four days. All students start with a tupelo wood cut-out. Josh will do a series of demonstrations that will teach students every aspect of carving and painting a realistic bird. Josh instructs with power tools. Students are welcome to use knives or other tools if they are comfortable doing so.

Student supplied tools & materials are listed on the registration form and also on Josh Guge's website. \$100 deposit at registration.

Josh Guge - World Class Fish Carver, Painter, Teacher.

"This art form has captured my family because of its uniqueness. Wood sculpture incorporates drawing, wood-carving, 3-D design, sculpting, and painting. The challenge of this art form is mastering these different forms of art.

My sculptures range from primitive decoys to highly detailed realistic depictions. Each piece is carved with the use of high-speed power tools and wood burners. They are hand painted or airbrushed original works of art. The materials I use are tupelo wood, metals, epoxy, and acrylic paints. My sculptures feature a variety of diverse wildlife, but my passion is for depicting tropical ocean fish and their habitat.

Today I strive to create art that will inspire others. I try to capture the essence of wildlife in my work. My goal is to evoke a mood or emotion. I have a desire to communicate to my audience how God's creation makes me feel. I want to express the emotion I experience when observing something beautiful in nature. With this form of art, comes an intense love not only for creating, but also a lifetime of studying the natural world around me.

Like my father, I have the desire to pass this art form on to others. The past decade of my life, I have taught hundreds of students all over the country from youth to seniors. I want to expose this unique art form to as many people as possible, giving others the opportunity that I was fortunate enough to grow up with. Maybe someday I will accomplish my goal to see wood sculpture thrive in mainstream art. Until then, I will keep creating and sharing my God-given gift to the next generation of artists.

2004 - Josh co-founded The Guge Institute and Art Studio in Elgin, Illinois with Bob Guge. Guge Institute classes include painting, carving, sculpting, drawing, airbrush, and design.

Awards include:

Best of Show – Song Birds, Congress Show, Davenport, Iowa (2008)

Best of Show – Song Birds, World Show, Ocean City, Maryland (2008)

Woodcarving & Woodburning Classes

Carving & Pyrography Classes held at the Oshkosh Senior Center (OSC)

200 North Campbell Road, Oshkosh, WI tel: (920) 232-5311

Handtool Carving & Woodburning in the South Building; Power Carving in the North (Woodshop).

Thursday Mornings in April - Scottie Dog A Beginner Woodcarving Class - Goheen & Krummick



A great class to begin or continue your carving journey!

Carve a 2.25" x 4" basswood Scottie Dog. Basswood included. Carving tools available for beginners; reserve at registration.

Power carvers should bring dust collectors. Two available for beginner power carvers; reserve at registration.

Thursdays, April 6-27, 2023

Time: 10:00 a.m. to Noon

Cost: \$30 Oshkosh Resident / \$35

Enrollment open; Limited enrollment. Maximum 12.

Deadline to Register: Thursday, March 30, 2023



Kitten Portrait Pyrography Class - Richeson & Krummick

Thursdays 1 - 3 pm April 13, 20, 27 & May 18, 2023

Cost: \$25 Oshkosh Resident / \$30 Nonresident



This 4 week class will woodburn a house cat portrait with focus on woodburning fur, ears, eyes and whiskers. Tone and shading plus use of accent color will be covered. Birch plywood plaque & test strip included.



Students will bring their pyrography set up including burner, nibs and graphite transfer paper.

Orchid Davis's book "*The ABCs of Woodburning*" is recommended.

Note: The above dates are correct; due to rescheduling from snow day cancellations.

Portrait of a House Cat Pyrography Class: Thursdays April 13, 20, 27, & May 18, 2023

Class size will be a minimum of 3; maximum of 10.

Cost: \$25 Oshkosh Resident / \$30 Nonresident;

Registration is open; closes April 6, 2023.

Skill Level: Intermediate to Advanced. Pre-requisite Woodburning Basics or permission of Instructor.

Woodcarving & Woodburning Classes

Carving & Pyrography Classes held at the Oshkosh Senior Center (OSC)

200 North Campbell Road, Oshkosh, WI tel: (920) 232-5311

Handtool Carving & Woodburning in the South Building; Power Carving in the North (Woodshop).

Monday Morning Woodshop Power Tool Carving under guidance of Gene Bengel & Don Schettl Bring your dust collector!

Bring your power carvers & dust collectors or your hand tools. Work on your own projects with a group of fellow carvers. Master Carver Gene will be available to guide you. Basic Machine Safety Training required for use of OSC shop power machines otherwise bench pass. Machine assistance by monitor will be available.

The Oshkosh Senior Center Woodshop has benches with wood vises, bandsaws, miter saws, various sanders, drill press, scroll saws and more available to those with safety training. Monitors can also help you with your project if use of resaw bandsaw, table saw, jointer or planer is needed.

Mondays, April 3-24, 2023

Time: 8:00 a.m. to Noon

Cost: \$40 Oshkosh Resident / \$45 Nonresident (4 week session)

Enrollment open; Limited enrollment. Maximum 12.

Deadline to Register: Friday, March 31, 2023



Monday Afternoon Woodshop Hand Tool Carving under guidance of Master Carver Gene Bengel



This class is open to carvers who want to finish old projects or begin a new one.

All skill levels are welcome. Gene will have a selection of beginner projects available and can help get you started on a great new hobby.

Don't have any carving tools? A limited number of sets are available for use in class. Reserve at registration.



Monndays, April 3-24, 2023

Time: 1:00 p.m. to 3:00 p.m.

Cost: \$20 Oshkosh Resident / \$25 Nonresident (4 week session)

Enrollment open; Limited enrollment. Maximum 12.

Deadline to Register: Friday, March 31, 2023

Woodcarving & Woodburning Classes

Carving & Pyrography Classes held at the Oshkosh Senior Center (OSC)

200 North Campbell Road, Oshkosh, WI tel: (920) 232-5311

Handtool Carving & Woodburning in the South Building; Power Carving in the North (Woodshop).

Basic Machine Safety Training (Woodshop) - Jeffrey Becker



Any NEW participants wanting to use the OSC woodshop machines for classes or "Guided Hours" are required to attend machine safety training class.

Both days are required. Training materials will be provided.
Facilitator: Jeff Becker

Upon completion of this class participants may use designated machines in the woodshop.

Training is good for one year from date of training.

Fridays. April 21 & 28 10 am - Noon

Cost: \$5 Oshkosh Resident / \$7.50 (nonresident)

Registration open; closes April 14, 2023

Woodshop Guided Hours - Two Sessions Wednesdays

2 1/2 hour woodshop time slots when you may use machines to work on your own projects.

Experienced volunteer woodworkers supply support as needed.

Each session costs \$5 Oshkosh Resident or \$6.50 for Nonresidents.

Wednesday Morning Session 9-11:30 am is walk in;

Afternoon session Noon - 2:30 pm is pre-registration only; 2 days in advance.

Prerequisite: Machine Safety Training required to use shop machines.

Relief Carving Links

Relief carving **techniques for creating the illusion of depth:**
https://canadianwoodworking.com/techniques_and_tips/relief-carving/

Sample videos from Chris Pye's Woodcarving Workshops
<https://www.woodcarvingworkshops.tv/videos/sample>

Here is a Lora Irish tutorial on a sailboat relief carving:
<https://www.lsirish.com/tutorials/woodcarving-tutorials/woodcarving-projects/relief-carving/sailboat-relief-carving/>



Chippers Show - ICE CREAM PAILS NEEDED!

Plastic ice cream pails **with lids** are needed to supplement our "buckets" for the raffle item tickets. Bring your clean, lidded pails to the April meeting!

Roadtrip Woodcarving Retreats, Workshops & Seminars

23rd Annual Snow Daze Carve In

Loyal Order of Moose Lodge, 1300 3rd Street, N., Waite Park MN 56387

Sponsored by Central Minnesota Woodcarver's Association (MNA) of St. Cloud, MN

April 28-30, 2023 2-5 Friday; 8-5 Saturday & 8-4 Sunday

Cost: \$100 includes lunch + Class fee 11 Instructors

Contact them by email at centralmnwoodcarvers@gmail.com and they will forward you a learning seminar booklet or you may also contact Wayne Nicoloff - Show Chairperson (612) 750- 8716.

The Doane Experience, Doane University, 1014 Boswell Avenue, Crete, Nebraska

46th Annual week long residential woodcarving classes on the campus of Doane University sponsored by the Mid-America Woodcarvers Association

June 3 - 9, 2023 (February 1, 2023 class descriptions will be sent out and registration begins)

Classes are offered for beginner, intermediate, and advanced carvers. Click on link for mailing list.

The 55th International Woodcarvers Congress

Jackson County Fairgrounds, Maquoketa, Iowa

June 10-17, 2023 Instructors include: Engler, Goodson, Hood, Lynum, Thalacker, Janson, Parsons...

For more information: www.woodcarverscongress.org

North House Folk School, 500 W Hwy 61, Grand Marais, Minnesota

Chip Carving

July 8-9, 2023, 9 a.m. - 5 p.m.

Class Cost: \$210 plus \$35 material fee. Materials fee includes a basic kit with templates for gears.

Instructor: Charlene Lynum Winner of Best of Show at 2022 Mid-Wis. Chippers Annual Show

Author of "Chip Carving Starter Guide: Learn to Chip Carve with 24 Skill-Building Projects"

This Chip carving project adds skills as the project proceeds. Small chips are removed from a wood surface to create shadows that transform a very plain item into an ornamental keepsake having beautiful, intriguing designs. We will start with basics: safety, materials, knives and how to hold them, sharpening, wood types, grain & sanding, and applying a pattern. Next we learn how to use a stab knife & four basic chips in chip carving: triangle, 4-sided chip, line and a 2-sided crescent. Additional topics include: how to carve back-to-back chips, undercutting, fixing a chip out, and how to finish a project.

For more information: <https://www.campusce.net/nhfs/>

Marc Adams School of Woodworking

5504 East 500 North Franklin, Indiana 46131

Carving in the Style of Grinling Gibbons: Foliage

Carving With Alexander Grabovetskiy

July 10-14, 2023 5 days Instruction 8-5 pm;

Cost: \$980 includes material fee.

Registration Begins December 1, 2022

<https://www.marcadams.com/workshop/carving-grinling-gibbons-foilage-grabovetskiy/>



Also, Grabovetskiy teaches "Fundamentals of Traditional Carving" April 17-21, 2023 Cost: \$995 at Marc Adams. For on line courses go to: <https://schoolofwoodcarving.com>

*Places to Go Carving: Appleton, Berlin, Fond du Lac ,
Scandinavia, Oshkosh, Green Bay, Princeton, Waupaca, Wausau*

Thompson Center on Lourdes (TCoL), at St. Bernadette Center,
2331 E. Lourdes Drive, **Appleton**, WI
Room 209 at South Building (St. Bernadette School), (door by elevator).
Fridays, 9:00 a.m. to noon - Cost: \$2 daily fee. All ages.
New carvers are welcome! You must register ahead of time (920) 939-3088.

Berlin Senior Center, 142 Water St., **Berlin**, WI 54923 (920) 361-5422
Wednesdays, 9:00 a.m. to Noon - Cost: Free.
We typically have about 12 people woodcarving.

Fond du Lac Senior Center Woodcarving Club, 151 East 1st Street, Fond du Lac, WI 54935
tel: (920)322-3630, Mondays, 9:00 a.m. - 11:30 a.m.
Yearly membership (age 50+) is \$10. New members always welcome.
Call to register (920) 322-3630.

ADRC Woodcarvers Group (Aging & Disability Resource Center of Brown County)
300 S. Adams Street, **Green Bay**, Wisconsin, Tuesdays, 8:30 a.m. to 10:30 a.m. - Cost \$2/day
Bring hand tools (no power allowed), wood & project e.g. caricature, chip carving, bark, fish, animals,
holiday, etc. No classes, but experienced carvers will help re: tools, sharpening, painting, etc.

Iola Chippers & Sippers, Scandihaus Coffee Shop, 280 N. Main St., **Scandinavia**, WI
Tuesdays, Noon - 3:00 p.m.
No Fee. Informal group. All skill levels. New carvers welcome.

Oshkosh Seniors Center (OSC), North Building Woodshop, tel: (920) 232-5311
200 North Campbell Road, **Oshkosh**, Wisconsin
Woodshop safety training required for machine use in woodshop. (See Current newsletter).
Woodshop has Guided Hours to work on projects in woodshop on Wednesdays.
Classes offered in both Woodshop (North) and South Bldg. See Newsletter.

Princeton Carvers, American Legion, 853 W. Main Street, **Princeton**, WI
Tuesdays, 8-11 a.m. - Cost: \$2 daily donation to the Legion.
An informal group of 4-6 people meet Tuesdays to carve and woodburn. New carvers welcome.

Waupaca Senior Center , 407 School Street, **Waupaca**, WI (715) 258-4437
Wednesdays 8:00 a.m. to 1:00 p.m. Enter at School Street entrance.
Yearly membership (age 55+) is \$15 -\$20 depending on residence. Waupaca
Woodcarving Club plus Senior Center carvers, typically 20-25 people meet.
New carvers welcome.

Wausau Area Carvers, Forest Park Village, 2901 N. 7th St., **Wausau**, WI
(South side of Building, Ground Level; door is marked "Legacy Woodworking Academy")
Tuesdays 10 a.m. to 1 p.m.; Thursdays 5:30 - 8:30 p.m.
Contact Cheryl Ruplinger at cherriruplinger@gmail.com

Woodcarving Annual Show Calendar

50th Ward World Championship Wildfowl Carving Competition and Art Festival

April 21, 22 & 23, 2023

Roland E. Powell Convention Center, **Ocean City, Maryland**

Admission: Multi-Day Pass: \$10, Seniors & Students – \$8, Children under 12 free (with adult)

From highly decorative works of art to functional hunting decoys, about 1200 different wildfowl carvings representing more than 150 species from around the world.

<https://www.wardmuseum.org/learn-explore/program-calendar/world-championship/>

Karve In 7 K

Westby Elementary School, 122 Nelson Street, **Westby, Wisconsin**

Saturday, April 22, 2023, 10:00 am to 4:00 pm.

Free Admission

Contact John Sutton (608) 634-4396; lbarnfarms@gmail.com

The 30th Annual Kettle Karvers Klub Woodcarving & Wood Sculpture Show, Competition & Sale

Sunday, April 23, 2023, 10:00 am to 4:00 pm.

Emil Mazey Hall, 5425 Superior Avenue, **Sheboygan, WI**

Contact Bob Lawrence (920) 458-4947; bob.kettlekarvers@att.net

Annual Oshkosh Bird Fest

Saturday, May 6, 2023, 6:00 am to Noon

Menominee Park, **Oshkosh, WI**

Contact: <http://www.oshkoshbirdfest.com>

The 47th Annual Mid-Wisconsin Chippers Woodcarving Show, Competition & Sale

"The Oldest Annual Woodcarving Show in the State of Wisconsin"

Sunday, May 7, 2023, 9:00 am to 4:00 pm. Admission: \$5 Age 12 & under free

The Oshkosh Convention Center, 2 North Main St., **Oshkosh, WI**

between the Leach Amphitheater & the Best Western Premier Waterfront Hotel.

The 40th Annual Northeast Wisconsin Woodworkers Guild (NEWWG) Show

October 28 & 29, 2023

Denmark High School, 450 North Wall Street, **Denmark, Wisconsin**

9:30 - 4 Saturday; 9:30 - 3 Sunday Food Concession; Bucket Raffle; Tools, Wood, Art for Sale!

Admission \$5; 12 & under free Free Parking

The 32nd Annual Show & Sale - Capital Area Carvers of Wisconsin & Badger Woodturners

Sunday, October 29, 2023

Deforest Area High School, 815 Jefferson Street, **Deforest, WI. 53532**

9-4 pm; Free Admission. Peoples Choice Award; Wood & Tool Sales; Concessions, Raffle

Art for Sale! Wood Turning Demonstrations & More. For info: www.cacw.clubexpress.com

The Second Annual Waupaca Woodcarving Show, Sale & Competition

Sunday, November 5, 2023

407 School Street, **Waupaca, WI.**

9-4 pm; Admission is \$4. Ages 6-16 \$2; 5 & under free

Tool & Wood Vendors; Art for Sale! Demonstrations

Exhibitor/Vendor Table Reservation Form

**Capital Area Carvers of Wisconsin & Badger Woodturners - 32st Annual Show & Sale
Sunday, October 29, 2023**



DeForest Area High School
815 Jefferson Street
DeForest, WI 53532



Show Hours are 9:00 A.M. to 4:00 P.M.

Entry for table set up begins at 6:00 A.M. Please: No early pack-ups

Table Fee: \$25.00

(All tables must have table coverings. All tables are 6' in length & 30" in width.)

Return your table reservation form and payment **no later than OCTOBER 15, 2023** to:

Cindy Potthast -W6494 Stewart Road
Poynette, WI 53955

Name _____

Address _____ City _____ State _____ Zip _____

Email Address _____ Phone _____

Electricity Needed: _____ Type of Carvings: _____

Will you be Selling Items _____

Number of Tables _____ X \$25.00 = \$ _____

Make Check Payable to: Capital Area Carvers of Wisconsin (CACW)

Mail to: Cindy Potthast - W6494 Stewart Road - Poynette, WI 53955

Questions: Contact Cindy Potthast at 608-712-2989 – cynthia.potthast@gmail.com

Cancellation/Refund Information

Table cancellations made prior to October 15, 2023 will be refunded less \$10.00 administration fee.

NO REFUNDS GIVEN AFTER OCTOBER 15, 2023

Capital Area Carvers of Wisconsin/Badger Woodturners Photograph, Audio and Video Release

I hereby grant permission to Capital Area Carvers of Wisconsin (CACW) the rights of my image, likeness, and sound of my voice as recorded in photographs, audio or video recordings without payment or any other considerations. I understand that this material may be electronically displayed via the Internet on the Club Webpage, or may be used by CACW in the promotion of future shows and educational activities. There is no time limit on the validity of this release. By signing this form, I acknowledge that I have read and understand this release.

SIGNATURE: _____

Rules & Guidelines for the Mid-Wisconsin Chippers Woodcarving Show

Definitions: "Cut-out" is wood shaped by bandsaw or a similar saw such as a coping saw.
 "Rough-out" is wood shaped by a machine duplicator.

Carvers should enter in one of the following classifications, but once competing cannot retreat to a lower class. Any carver who has won three (3) blue ribbons, Best of Class, or Best of Show in any class, must move up to the next higher Class. Ribbons won at any judged competition count towards class advancement.

<p>Youth: Open to any carver under the age of 18 and who is sponsored through a registered Table. Each youth is limited to two competition entries.</p>
<p>Novice: For the beginning carver, who has not won three (3) blue ribbons in any category, nor Best of Class, nor Best of Show, at <u>any</u> judged carving competition. Carving from Rough-outs and class projects are allowed.</p>
<p>Intermediate: For the more experienced carver who had developed skill beyond the novice level. Carvings from rough-outs and class projects are allowed. This is the next level above novice.</p>
<p>Open: Any carver, except Masters, may enter Open Class. Cut-outs are allowed, but no rough-outs and no class projects where the instructor has carved or painted on the entered piece. This is the next level above intermediate.</p>
<p>Master: This class is for carvers who have developed their skill beyond the Open Class. Cut-outs are allowed, but no rough-outs, and no class projects where the instructor has carved or painted on the entered piece. The ultimate level.</p>

1. Entries must be in the judging area between 6:45 AM and 8:00 AM; judging starts at 8:00 AM.

2. All entries must be created and carved in wood. Pyrography may be on various media (wood, leather, paper, gourds, etc.)
3. You must have a display table to enter judging.
4. Tables may be shared, but in order to enter judging, both entrants must pay the full table fee.
5. Carving entries must have been completed since the last MWC show, and not have been entered in **this** show before.
- 6. All carvings entered in judging must have the date and carvers name fixed to the piece, but covered for judging.**

7. You may enter up to 4 carvings in competition; a maximum of two in the same category. An exception is for a "club table", which may enter up to six carvings, but only one per person (Each person uses a separate entry form.)

8. Best of Class winners will be chosen from the blue ribbon winners from all the categories for each class.
9. Best of Show will be selected from the Best of Class winners from all classes.
10. Ribbons from previous years or from other shows may not be displayed.
- 11. Carvers may rent more than one table, but each carver is still bound by the four entry limit.**
12. Exhibitors must furnish their own covers and floor length table skirts.
13. Tables must be reserved by April 15. **Reservations received after April 15 will be charged an additional \$5.00.**
14. Please observe show hours. **No packing up before 4 PM.** If you carve at your table, please clean up your area.
15. If you sell carvings, you are responsible for collecting sales tax.

rev. 041522

<i>MWC Show Entry Example</i>	<i>Category Number</i>	<i>Brief Description of Carving</i>
<i>1st Entry</i>	<i>2 Songbird</i>	<i>Pair of Chickadees</i>
<i>2nd Entry</i>	<i>15 Caricature</i>	<i>Green & Red Hunter & Dog</i>
<i>3rd Entry</i>	<i>15</i>	<i>Cowboy with Yellow Vest</i>
<i>4th Entry</i>	<i>12 Group</i>	<i>2 finches & a snake</i>

Mid-Wis. Chippers Show Judging Entry Form Table Entrant

If you are sharing a Table, or at a Club Table, each entrant should use a separate form;

note both your table number & letter designation, for example, Table Entrant # 436 (Example)

Entries for judging are registered from 6:45 am to 8:00 am. Rules on Page 2.

Judging starts promptly at 8 am. (See rules for number of entries allowed.)

Categories:

- | | | |
|--------------------|-------------------------|---------------------------------------|
| 1. Waterfowl | 10. Human | 19. Interpretive/Stylized |
| 2. Song Birds | 11. Relief | 20. Carved Canes & Walking Sticks |
| 3. Game Birds | 12. Group* | 21. Pyrography |
| 4. Shore Birds | 13. Mythical | 22. Pyrography with Color |
| 5. Birds of Prey | 14. Santas | 23. Pyrography - Human (New Category) |
| 6. All other Birds | 15. Caricature | 24. Gourds, Carved and/or Burned |
| 7. Fish | 16. Amphibians/Reptiles | 25. Intarsia |
| 8. Marine Mammals | 17. Religious | 26. Bark Carving |
| 9. Mammals | 18. Chip Carving | 27. Misc.(Any other woodcarving) |

*A group is two or more subjects on one base; e.g. 2 adult male chickadees may be entered as a group.

Note: Entry officials may override any entrant's category selection.

I am displaying my own work, handmade by myself, and **carved since May 1, 2022.**

I will not hold the Mid- Wisconsin Chippers Woodcarving Club (MWC) or The Oshkosh Convention Center/Best Western Premier responsible for loss or damage to my work. Permission is granted for MWC to take and/or use photographs/videos of my work for publicity.

Signature: _____ Date: _____

Name: _____

Address: _____ City: _____

State: _____ Zip: _____ Phone: (_____) _____

Email: _____

Circle your current competition class. **Enter # of blue ribbons** previously won while at that level:

Master Open (____) Intermediate (____) Novice (____) Youth (<18)

MWC Show Entry List category number & describe your entries (Example on page 2.)

	<u>Category Number</u>	<u>Brief Description of Carving</u>
1st Entry:	_____	_____
2nd Entry:	_____	_____
3rd Entry:	_____	_____
4th Entry:	_____	_____

Please print and submit form to Paul Wolters 1273 Meadow Lane, Neenah, WI 54956 Keep a copy for your records.

Revised: 8/23/2022

