

Register now! 2024 Chippers Show Table Prices increase January 1st.

Whittle Bits and Pieces

Mid-Wisconsin Chippers Newsletter for December 2023

Club President : Tim Gosz Vice-President: Duane Foote

Treasurer: Bill Tuchscherer Secretary: Cedric Richeson

Annual Show Director: Paul Wolters

Visit our Website at: <http://midwisconsinchippers.weebly.com/>

*Welcome to New Member
Don Schettl!*

Next Meeting **Sunday**, December 3, 2023

Christmas Potluck (See Page 15)!

Gloria Dei Lutheran Church, 1140 Tullar Road, Neenah, Wisconsin
No Board meeting. **Potluck: 1:00 p.m.** Library Open.

Bring your carvings & pyrography for Show 'N Tell!



*The Chippers Club logo:
"The carver on the stool"
was created by Bob Yancey
MWC Club President
from 1984 - 1985.*



PUBLISHED BY CUPPNER & IVES

125 MASSAUI ST. NEW YORK.

THE INGLESIDE WINTER.

Table of Contents

Meeting Calendar, Location,.....	Page 2
Dave Wirth Obituary.....	Page 3
November Club Report.....	Page 4
Ice Sculpture Demonstration by Paul Salmon.....	Page 5
Show 'N Tell from October 1st Meeting.....	Pages 6-9
Tony Resop Banner.....	Page 9
Waupaca Show Photos.....	Pages 10-12
Denmark (NEWWG) Show Photos.....	Page 13
Carving Relief Poem by Cedric Richeson.....	Page 14
Potluck Information and Club Notes.....	Page 15
Woodcarving Class Interest Survey.....	Page 16
2024 Chippers Show Info and Volunteer Requests.....	Pages 16-19
Friendship Cane Theme.....	Page 20
NEWWG January Talk by Annette Aubinger Therapy through Whittling	Page 21
Oshkosh Senior Center Woodshop Open House on January 25th.....	Page 21
Oshkosh Senior Center Carving, Pyrography & Woodshop News.....	Pages 22-24
Floyd Rhadigan April Caricature Carving Class in Stevens Point.....	Page 25
Online Woodcarving Classes.....	Pages 26-27
Places to Go Carving in Mid-Wisconsin	Page 28
Annual Woodcarving Shows List (Updated).....	Page 29
<u>Attachments - Forms</u>	
Membership Dues/Renewal Form.....	Page 30
2024 MWC SHow Table Registration Form.....	Pages 31-32

2023-2024 Club Meeting Calendar:

- ✓ August 27 Visual Aides for Woodcarving by Chris Rigotti
- ✓ October 1 Carving Competitions Part I The Basics
- ✓ November 4 *Ice Sculpture Carving Demo by Paul Salmon of Krystal Kleer Ice Sculptures*
- December 3 **Christmas & Holiday Potluck with 12:30 Setup & lunch at 1 p.m.****
- January 7 Carving Competitions Part II Making a Blue Ribbon Winner
by Master Carver Bill Kempen
- February 4 Carving a Button Tufting Pattern by Master Carver Richard Young
- March 3 *Panel - Pyrography Challenges - skin tones, clouds, foliage, feathers, scales & more*
- April 7 **Show Preview, Judging Pre-registration, Friendship Canes, Elections**
- May 5 48th Annual Show at Oshkosh Convention Center**
- May 19 1:30 p.m. Show Review**

Regular Club Meetings

The Mid. Wis. Chippers Club meets at Gloria Dei Lutheran Church, 1140 Tullar Road, Neenah, Wis. (by Neenah High School) on the first Sunday of each month (**except as noted.**)

Meetings are at 1:30 p.m. (except our December potluck with a noon setup & lunch at 1:00 p.m.)

Board meetings are at 12:30 p.m. (No Board meeting in December.)

Club Webmasters:
Josie Hartzke & Jackie Silva

Librarians:
John Goheen & Duane Foote

Mid-Wisconsin Chippers Woodcarving Club (MWC) Board

Barb Behm Rodney Manthey
Gene Bengel Keith Melzer
Steve Binder Chris Rigotti
Dick Krummick & the Officers

*2023-2024 Club Year Begins
Dues \$20 are now past due!*



*Thanks to the 65 people who
have paid their 2023-2024
dues!*

Dave Wirth Passes Away

Dave Wirth of Berlin was a regular attendee at our meetings and in carving classes at the Oshkosh Senior Centers.

Dave often carved with fellow Chippers at the Berlin Senior Center. His many duck and fish carvings mirrored his long time interest in duck hunting and fishing.

His obituary is reproduced below.



David Joseph Wirth, age 83, of Berlin, died peacefully on Monday, November 13, 2023, at Markesan Resident Home.

He was born September 24, 1940, in Berlin, WI, the son of Clarence and Catherine Stankoski Wirth. Dave was a 1958 graduate of Berlin High School and received a bachelor's degree in economics from UW-Oshkosh in 1964. On June 5, 1976, he was united in marriage to Marcia Vasey at St. Joseph Catholic Church in Berlin.

Dave was a laboratory supervisor, technical director and quality control manager at Berlin Chapman Foundry for 43 years. He was a director of NEW Foundry Society and WI Amateur Retriever Club. Dave had a passion for the outdoors and was well known for his decoy carvings. He was a member of All Saints Catholic Parish, Ducks Unlimited, Walleyes for

Tomorrow, Knights of Columbus Father Fiss Council #1547 and a past treasurer for Berlin Conservation Club.

He is survived by his wife, Marcia; two brothers, Michael (Karen) Wirth and Leon (Debra) Wirth; sisters-in-law; Carol (John) Rusch and Joanne (Roger) Turchany; many nieces, nephews and friends. He was preceded in death by his parents.

Mass of Christian Burial will be held Tuesday, November 28, at 11:00 a.m., at All Saints Catholic Parish in Berlin, Father Bosco Pudhota officiating. Private inurnment will be in Oakwood Cemetery.

A gathering of family and friends will be held on Monday, November 27, from 4:00 p.m. to 7:00 p.m., at Barbola Funeral Chapel in Berlin.

Memorials may be directed to Berlin Food Pantry or All Saints Catholic School. Anyone wishing to send a sympathy card to the family, please mail to David Wirth, c/o Barbola Funeral Chapel, PO Box 201, Berlin, WI 54923.

November Club Report

Tim Gosz opened the Board meeting at 12:36.

The Board discussed upcoming shows, the new club library cabinet installation, a request by the Menasha Library for a club display of carvings & woodburnings, possible future carving classes, club finances & other activities. Keith Melzer has resigned from the Board. Keith is recovering from surgery.

An election to fill the vacant Board position will be held at the December meeting.

The general meeting was opened at 1:33 p.m. by President Tim Gosz. Total attendance was 35.

Following the Treasurer's Report, carving events at Waupaca and Denmark were noted, and upcoming classes were reviewed.

A sign up sheet to gauge interest in possible spring Josh Guge classes for habitat and/or brush painting was made available. One person signed up for each class. The interest sheet will also be available at the December meeting to gauge further interest.

The club was advised of the carving/pyrography display opportunity at the Menasha Public Library in December. Paul Wolters volunteered to coordinate the display. Contact Paul if interested in displaying your art.

At 1:45 the club adjourned to the outside to watch a demonstration of ice sculpturing by Paul Salmon (details below).

Following the demonstration, there was Library time, using our new cabinet, snacks, and Show 'N Tell.

The meeting closed at around 3:30 pm.

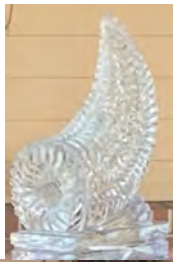
MID-WIS. CHIPPERS CLUB LIBRARY HAS A NEW CABINET!



Librarian John Goheen and our new library cabinet. The club now has room to add more books.

Ice Sculpture Carving - Cornucopia

Demonstration by Paul Salmon of Krystal Klear Ice Sculptures



Paul Salmon is a full time professional ice sculptor with over 30 years experience. He makes his own ice in 300 lb blocks to ensure transparency. Paul showed us the variety of tools employed in his art including chainsaws, angle grinders, hand tools, torches and irons.

After showing various cuts on a small block of ice, Paul did the finish work on a large ice cornucopia. He said it took about 45 minutes of carving to reach the basic shape shown in center left photo. We watched him finish the outside detail as shown above. His sculptures sell for \$600-\$1500 or more.

More of Paul's work can be seen at his Krystal Klear Ice Sculpture website: www.krystalkleerice.com

Show 'N Tell Photos - November 4th Meeting



Jerry Bitter showed pyrography projects from classes that he took at the Oshkosh Senior Center.

At the top, Jerry shows his first two efforts at woodburning a portrait of his granddaughter. Jerry noted how one can make great strides in woodburning with the experience gained from a first effort. Here he was unhappy with the initial result, but viewed it as a practice piece. His second effort shows dramatic improvement. Remember that even DaVinci and Rembrandt often made "studies", that is practice pieces, before beginning what became their celebrated work.

Left & above, Jerry found burning this landscape to be very relaxing and enjoyable.

Show 'N Tell Photos - November 4th Meeting



Barb Behm made the cardinal art from a piece of barn board. The painting and composition of both cardinal and owl are excellent.



Jim Rooker's cowboy caricature is from a Dave Stetson pattern. Another impressive paint job on a well done carving.



Show 'N Tell Photos - November 4th Meeting



Richard Young experimented with adding a reflective color to his button tufted pillow carving. Richard also showed his carving of youth playing soccer. This was carved from a newspaper photo.



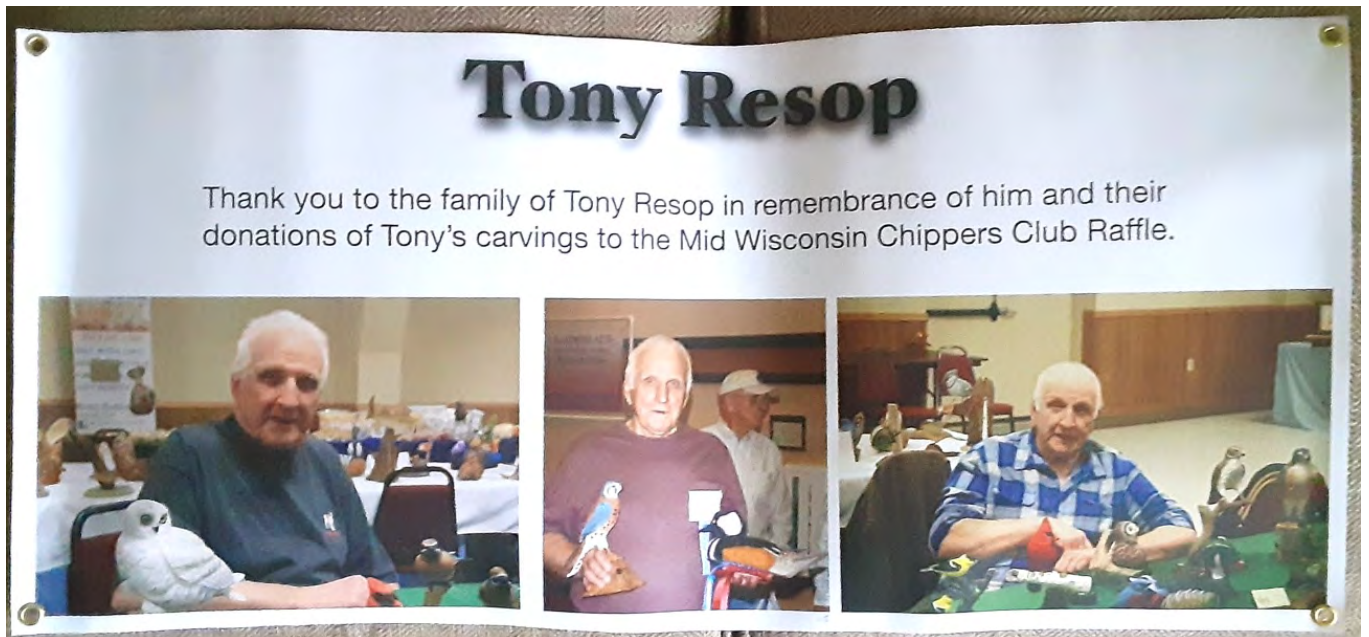
Ahmed Pima made a two sided bear & eagle wood burned plaque with a touch of color added to the Eagle.



Show 'N Tell Photos - November 4th Meeting



Bill Tuchscherer showed his finished Bart Starr pyrography. The background was burned light using Bill's Colwood Detailer and then accented using a mini-torch to add the darker portions. Acrylic paint was used on the jersey.



This banner was made by Paul Wolters to acknowledge Tony Resop's family who donated many of Tony's carvings to benefit the club. The banner will be near Tony's carvings at the 2024 Show Raffle.

Time to Renew Your Membership!

Mid-Wis. Chippers Dues are \$20.

Dues help pay for our Meeting Place, Trailer Maintenance & Storage, Show Expenses, Class Scholarships, Venue Fees for Classes, Meeting Treats, Library Additions & More.

WAUPACA AREA CARVERS 2ND ANNUAL SHOW

There were lots of familiar faces and ribbon winners on November 5th at Waupaca's 2nd Annual Show. Demonstrations by Rich Wetherbee, Ray Claussen and others, raffle, a judged competition, many highlights!



Richard Young was feeling chipper with a couple of blue ribbons, Best of Class and Best of Show. Virginia Temme also garnered a red for her woman in antebellum attire.



Rich Goodell gathered three blue ribbons for three birds. Another Chipper upholding our club's reputation for bird carving.



John Brad is wearing his lucky hat with our club's Bird Carver patch.

It didn't fail him as John brought home a blue ribbon for his songbird, and another blue for a very nice perch.

WAUPACA AREA CARVERS 2ND ANNUAL SHOW



Paul Wolters does a fantastic job. We need Paulcam to look over his shoulder as he carves.



Ron Engen is a master bird man. Ron's woodburned duck is nicely framed.



A trio of bird carvers from left to right: Steve Noll, Barb Behm and Dick Krummick (Dick also got a blue for his Panda).

WAUPACA AREA CARVERS 2ND ANNUAL SHOW



Linda Gomach gets the Elvis Costello award for her red shoes. Linda is constantly challenging herself and the results show her artistry and imagination.



From above clockwise, Richard Young & Harold Mohr, Tom & Rosemary Kautz, Jack Kumm, John & Margie Gehrman, Jayne Neuenfeldt.



Waupaca's Harold Mohr is congratulating Richard on winning Best of Show.



Ron & Marilyn O'Kray were among the many familiar faces at the NEWWG show.



John Novak

The Northeast Wisconsin Woodworkers Guild held its 40th Annual Show on November 11th and 12th. It was well attended and had a raffle with many valuable prizes. There was a large display of canoes built by Stan Fisher, carvers, woodburners, woodturned bowls, scrollsaw art, furniture, and a wide range of the many wood arts.



An American Legion color guard led the audience in the Pledge of Allegiance in a ceremony recognizing Veteran's Day at the Show.



Tom Kautz carved his "Izaak Walton" mug at left from cherry.



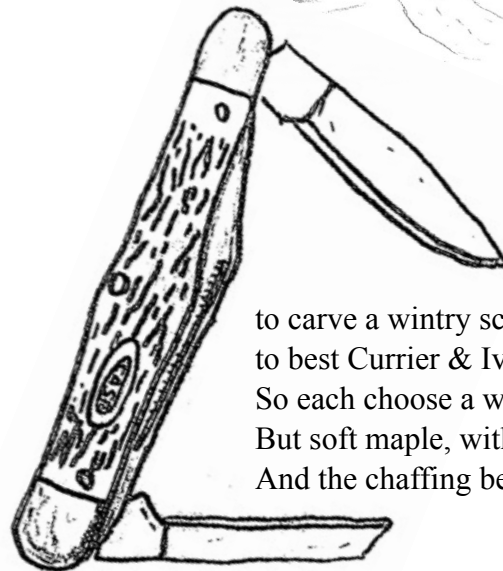
Carving Relief

The North Wind shall blow
And Heap up the Snow
And what will poor carvers do then?

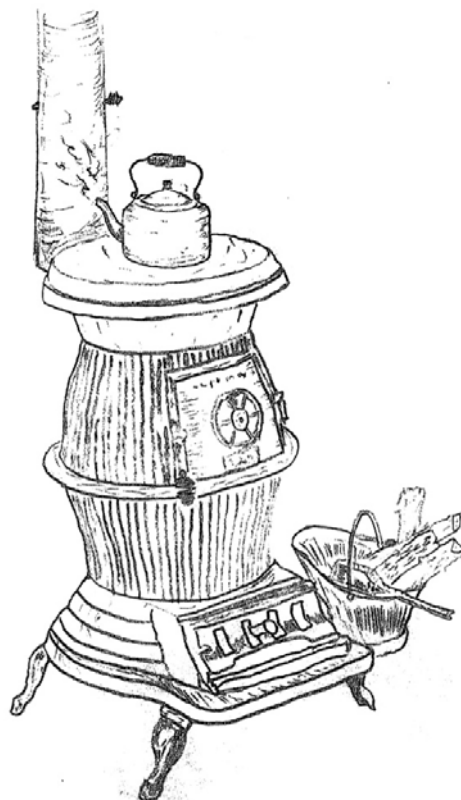
They'll bring wood from the barn,
Round the woodstove they'll yarn
And whittle awhile and then,
Feed the fire with chips,
as they bandy forth quips,
from Gunnar, Paul, Bill and Sven.



Of wood, knives & grain,
they always complain,
They reminisce for hours on end,
of carvers they knew,
who shew what to do
with knife, mallet, tool,
and sanders, hide glue,
to stop cut & fix,
(whittlers knew all the tricks),
chain links & cages, whirly-gigs & whistles,
butternut broncos, and even wood pistols,
...and then,
a challenge is made to all,
to Gunnar & Bill, Sven & Paul,
A challenge is made...



to carve a wintry scene,
to best Currier & Ives, you ken?
So each choose a wood slab; not pine!
But soft maple, with grain, even, fine.
And the chaffing begins agin.



While outside is souging, inside they're roughing
oblivious to the external din, and then...

Set In & Grounded,
their Reliefs are well founded,
But modeling will be a slow go.
So sipping coffee's last sip,
they stand up and stretch,
...rub their hands, ...
and say,
...Paul, ...let's call it a day.

For the North Wind doth blow;
it's heaped up the snow,
and we must shovel to go on our way.

- Cedric Richeson



Last Chance at 2023 Rates!

Time to Secure Your 2024 Show Table!
Remember Member Table Rates are only \$20 per table if you sign up now.
January 1 the rate goes up to \$25.



Christmas & Holiday Potluck Meeting on Sunday!



Set Up begins at 12:30 p.m..
Eating begins at 1 p.m.
Spouses welcome!

President Tim Golz will say grace to begin the buffet style event. The Club will have disposable plates, utensils, cups, turkey & ham. Bring whatever dish you want, side, meat, fruit, vegetable, dessert, smorgasbord item, salad, soup, etc. After all it is a "potluck."

Last meeting for 2023! Our Treasurer Bill Tuchscher will take table registrations for our 2024 May 5th Show (price increases on January 1), and collect dues from any stragglers. You may also pick up Friendship Cane blocks!

Since Bill would like to eat too, try to make payments between 12:30 and 1 p.m. when the buffet line starts. Yes, we will have Show 'n Tell following lunch. Library will be open. No Board meeting.

Renew Your Membership!
See the Renewal form attached to this newsletter.
Membership listing will be updated to current members after the December Meeting.

MID-WIS. CHIPPERS CLUB LIBRARY
CATALOG IS ON LINE!

Our club library book & magazine holdings is available on line at:
<http://midwisconsinchippers.weebly.com/>
You can search by category, title or author.

Club members! Look on line for carving book. We have lots of reference materials. Then just bring your list to the meeting and retrieve the wanted books from our new book cabinet.

Ask Librarians John Goheen or Duane Foote, if you need help.

Interested in taking a Woodcarving Class taught locally in 2024?

Possible Classes: Chip Carving, Bird Carving, Airbrush Painting, Brush Painting or Habitat.

The Club is asking its members to indicate serious interest in specific classes. We will take care to minimize conflicts and overlapping dates. Classes would be set up at a location in the Appleton to Oshkosh area, most likely in Neenah at St. Marks Lutheran Church. We have several excellent instructors in mind. *Possibilities* include:

Airbrush class by Josh Guge; typical cost \$100 for a one day class on a Saturday.

Brush Painting class by Josh Guge; typical cost \$200 for a two day class.

Habitat class by Josh Guge; typical cost \$300 for a three day class.

1/3 Size Goshawk Class by Josh Guge, typical cost \$ 400 for a four day class.

Chip Carving class by Jen Jensen; typical cost \$100-\$150 for a two day class, Th-F, or F-Sat.

The above classes may also have a small material fee.

Before the club contacts a master carver and makes a *commitment* for our club to sponsor a class, the club will need *commitments of interest* from enough club members. What is a "enough"? Depending upon the class, six to ten students. Serious Interest Sign-Up Sheets will be at our Sunday Potluck meeting. Please let the club know this Sunday! If you are interested, but cannot make the meeting, e-mail your particular interest to cedricheson@icloud.com.

MID-WIS. CHIPPERS WOODCARVING CLUB MAY 5, 2024 SHOW, COMPETITION & SALE AT THE OSHKOSH CONVENTION CENTER

Oshkosh is Event City. Make it a weekend. The day before our show you can check out the EAA Aviation Museum, Oshkosh Public Museum, Military Veterans Museum & Education Center, Paine Art Center & Gardens and more.



The Best Western Premier Waterfront Hotel & Conference Center connects to The Oshkosh Convention Center.

The Mid-Wis-Chippers Club website has current information, forms, articles, and photographs from club events and meetings. Go to: <https://midwisconsinchippers.weebly.com>



48th ANNUAL SHOW!

The Mid-Wis. Chippers needs volunteers now!

To learn the ropes of creating a great woodcarving Show, Sale & Competition.

We need volunteers for hospitality, registration, admissions, publicity.
Other important tasks for success are recruiting exhibitors, vendors, judges.

Email cedricheson@icloud.com to volunteer or sign up at the club meeting.

Hospitality.

Hospitality involves:

1. Prepare Welcome Packets & Thank You cards before the show day. Mail thank you cards to non-attending raffle donors.
2. Distribute Welcome Packets on show day before 9 am. Place Table Number Cards in the proper location on Show tables, along with the welcome packets.
3. Show Day Set Up Checker: At 6 am. the venue workers should have the tables, chairs, door locks, carts etc. all in place. The checker verifies this and tells the Club's Show Director if any deficiencies need to be addressed (e.g. popcorn mess on floor from prior night event needs to be cleaned up).

Registration Volunteers

1. Volunteer & Vendor Registration - At the show first thing (6 a.m.) to: (1) put up signs; and (2) register & wristband volunteers, exhibitors, and vendors and provide a show program to guide them to their tables. The times are from 6 am to the show opening at 9 am, these volunteers work shifts of an hour or more. At least four volunteers are needed. Also, order any needed wristbands.

2. Judging Registration - This involves knowledge of Judging Rules & Procedures. Times are early. These volunteers, directly following their check in at the Show registration table, proceed to set up & check the Judging area including table set up & category cards, directional signage, Judging Registration table coverings, and the paraphernalia associated with judging registration.

These volunteers also register the carvings for judging and some of the volunteers act as "runners" to place the carvings in their proper place for judging with their class & category designations intact.

Six to nine people are needed depending upon the number of entries. (4-6 registrars plus 2-3 "runners.") The time is from about 6:15 - 8:00 a.m. (Need to arrive at 6:00 in order to get checked in as volunteers.)



48th ANNUAL SHOW!

Admissions Volunteers

Admissions involves taking money, placing wristbands on show attendees, providing show programs and directions. Wristband start and stop numbers are logged to track attendance. Also, checking in late arrival vendors, volunteers and Presenters. They get special exhibitor/volunteer wristbands. Lots of time slots from 9 am to 4 pm. Volunteers here typically work in 1-2 hour shifts.

Mid-Wis. Chippers Club Table Volunteers

Answer questions, sign up new members, sell club patches, hand out club newsletters, 2025 Show fliers and table registration forms. Set up Club history photo albums. Be an ambassador for the club, and woodcarving. Provide information about upcoming carving events and other club's shows and classes.

Distribute and collect Show surveys. Set up Posterboard displays on tables for any last minute exhibitor cancellations (there are usually one or two).

Volunteers here typically work in 1-2 hour shifts.

Recruiting exhibitors, vendors, judges

People are needed to prepare & mail out table registration forms, Judging Rules & entry forms, and show promotional material. This mailing solicits carvers outside of our club to join us as exhibitors & competitors at our show. In 2021 we solicited 45-50 carvers from outside our club including contacts at 8 area carving clubs. 38 non-club member carvers had one or more tables at our 46th annual event. We also had club tables from three other clubs. This is usually a one time mailing sent out in the fall.

We similarly solicit vendors.

Judges are a special solicitation which is usually done by one or more of our Board members who has contact with master carvers from other clubs. Our membership likes to utilize outside judges.

Another key area is publicity

There are many aspects to publicity and always more avenues that might be explored.

1. Show Flyers - Flyers don't just happen. They are made & printed and handed out at club meetings, for members to use at fall and spring shows. They are widely distributed to family, friends, bulletin boards at stores, companies, banks, supermarkets, senior centers, and business acquaintances to promote the show. Doctors & dentists don't want to become advertising outlets, but YOUR doctor and nurse might not mind receiving a personal copy during your annual checkup. If you, your spouse, children, grandchildren, or siblings are employed, their place of employment might have a bulletin board where events may be posted.



48th ANNUAL SHOW!

Another key area is publicity

2. Carving Magazines -

Information is sent in the fall to carving magazines for their Event Calendars.

Chip Chats - Info sent to: nwca@chipchats.org

Woodcarving Illustrated - editors@woodcarvingillustrated.com

Wildfowl Carving Magazine - mallison@amprycp.com

3. Carving Clubs - Wisconsin area including: Blackhawk Carving Club, Capital Area Carvers of Wisconsin, Iola Chippers & Sippers, Kettle Karvers Klub, NEWWG, Rock River Valley Carving Club, Waupaca Area Carvers, Wausau Area Carvers, West Wisconsin Woodcarver's Guild, Wisconsin River Woodcarvers.

4. The Oshkosh Convention Center Electronic Signboard - The Convention Center the week before the show will advertise our show on at no extra charge. They will need a reminder and ad copy.

5. Press Release - The Oshkosh Visitor Center at no charge will send out a **press release** to radio & television stations, and newspapers advertising our show. Oshkosh is Event City and the Visitor Center does this as part of their mission to publicize Oshkosh venue events. They have a press release questionnaire and will need to receive particulars of the event about one month before the show. In 2023, they provided us with welcome bags and sharpies for our exhibitors and vendors.

6. Newspaper Advertisements - In 2023 we had paid ads in several local weekly newspapers: The Oshkosh Herald, The Neenah News, and the Berlin Journal Newspapers publications of The Billboard, and the Feature Section that goes out with the Berlin Journal, Omro Herald, Green Lake Reporter, Princeton-Times Republic, and Markesan Regional Reporter.

7. Newspaper Articles - In 2023 we provided article copy & photographs on thumb drives to the newspapers that we advertised with for their use. With their edits and choice of photographs, articles appeared in all papers.

8. Yard signs - Yard signs are stored in the trailer. They are updated with adhesive stickers to show the date of the current show. Yard signs are distributed at the March or April club meeting before the show.

9. Other - Radio, Billboards, other possibilities exist. Assistance is needed for any or all of the above categories. What strikes your fancy?



CALLING ALL CARVERS!

THE FRIENDSHIP CANE'S THEME FOR OUR 2024 SHOW IS WISCONSIN WILDFLOWERS & MUSHROOMS!

PICK UP A BLOCK TO CARVE OR WOODBURN AT SATURDAY'S MEETING.
RELIEF CARVING AND WOODBURNING WILL WORK WELL WITH THIS THEME!

ARE YOU UP TO THE CHALLENGE?

IF NOT, MAKE ANY DESIGN FOR OUR POTPOURI FRIENDSHIP CANE.

The Wisconsin State Flower is the Wood Violet, but there are lots of wildflowers native to the Badger State:

- Woodland Phlox
 - Pale Purple Cone Flowers
 - Black Eyed Susans
 - Compass Plant
 - Prairie Smoke
 - Prairie Spiderwort
 - Royal CatchFly
 - Bloodroot & more
- See e.g. wildlifeinformer.com/wildflowers-in-wisconsin
or www.uswildflowers.com



Five States have a State mushroom. Alas, there is no State Mushroom for Wisconsin! However, Wisconsin is home to many fungi, from the delicious Morel at left to the ominous Destroying Angel below!! Other common 'rooms in Wisconsin: Artist's Conk, Crown-tipped coral, puffball, Chicken of the Woods, Chanterelle, Aspen Oyster & more!



Want to peruse Fungi Photos for ideas? Try these websites:
argobuilder.com

wisconsinmycologicalsociety.org

wisconsinmushrooms.com

www.pbases.com

The Next Oshkosh Senior Center Woodshop Open House is Thursday, January 25, 2024 9 o'clock to Noon



Therapy Through Whittling

Annette Aubinger will speak on "Wood Carving - a Life Altering Therapy" at the January 17th Northeastern Wood Workers Guild (NEWWG) meeting.

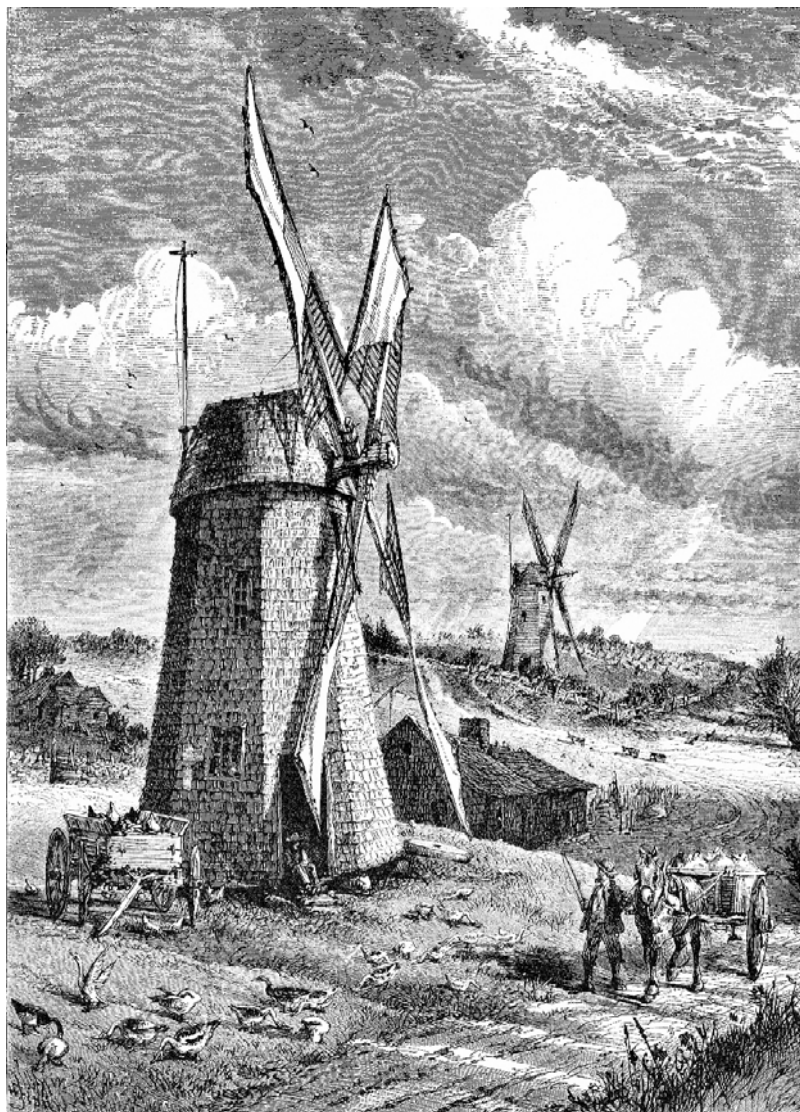
Place: Northeast WI Technical College (NWTC) 2740 W Mason St., Green Bay, WI .

Meeting starts at 7 p.m. Prospective members are welcome to attend a meeting, and meet fellow woodworkers. Annette Aubinger is President of the Ashwaubenon Historical Society and an experienced teacher.

For more information email: info@newwg.org or visit their website at www.newwg.org

*Carving & Pyrography Classes held at the Oshkosh Senior Center (OSC)
200 North Campbell Road, Oshkosh, WI tel: (920) 232-5311*

Richeson & Krummick Pyrography Class- Windmill Scene Thursdays 1-3 pm December 14 - January 18



Thursdays 1-3 p.m. December 14 - January 18, 2024
(6 day class - 12 hours total)

Class size: minimum of 3; maximum of 10.

Cost: \$30 Oshkosh Resident / \$35 Nonresident;

Registration open; closes when full or December 11, 2023.

Skill Level: Advanced, Intermediate & Beginner

(Detail And design elements will be adjusted depending on skill level)

Pyrography techniques are used to burn this classic windmill scene on a 9" x 12" birch plywood plaque.

This pattern may be adapted by students of different skill levels by omitting one or more design elements such as clouds, geese, carts, etc.

Plaque and test strip are included.

Students will bring their pyrography kit including burner machine and pen with their favorite nibs including those suitable to work as a writer, skew, and shader, graphite transfer paper, white vinyl and kneaded erasers, red or blue pen.



Woodcarving & Woodburning Classes

Carving & Pyrography Classes held at the Oshkosh Senior Center (OSC)

200 North Campbell Road, Oshkosh, WI tel: (920) 232-5311

Woodburning in the South Building; Carving in the North Building Woodshop.

Gene Bengel - Project Wood Carving



Refresh skills and work on projects alongside fellow carvers.

This class is open to wood carvers using either power or hand tools.

Power tool carvers must bring a bench fan dust collector.

Only carvers with current machine safety training may use designated OSC shop power equipment.

Carvers without current machine training may carve using handtools and their own hand rotary tools (e.g. Dremels) using a bench pass available from Gene.

Gene is available to instruct, guide, and problem solve to help you with projects.

Mondays, 8:00 a.m. to Noon, December 4 - 18 (3 days; 12 hours total.)

Class size: minimum of 3 / maximum of 14.

Cost: \$30 for Oshkosh residents and \$35 for non-residents. Register by Friday, December 1st.

Woodshop Guided Hours

Wednesdays from 10 am - 2:30 pm

Woodshop time for you to use machines to work on your own projects.

Experienced volunteer woodworkers supply support as needed.

Cost \$5 (Oshkosh Resident) / \$6.50 (Nonresident)

Prerequisite: Machine Safety Training. If you plan an afternoon arrival please call ahead to advise.



Woodcarving & Woodburning Classes

Carving & Pyrography Classes held at the Oshkosh Senior Center (OSC)

200 North Campbell Road, Oshkosh, WI tel: (920) 232-5311

Woodburning in the South Building; Carving in the North Building Woodshop.

Only Two Seats Left!

Don Schettl & Gene Bengel - Bird Carving Monday Afternoons January 8 - March 25, 2024 Lifesize Robin Woodcarving Class



A great class for intermediate to advanced carvers to continue their wood carving journey.

The instructors will teach techniques and methods to carve the state bird of Wisconsin, a full size Robin. Students will carve from a basswood cutout provided by the instructors.

Award winning instructors will help you with step by step instructions to complete your project. Power carvers will require the use of a dust collector/bench fan.

This class is filling up fast, so don't delay if you want to sign up.

Painting & habitat classes will be scheduled and offered at a later dates.

Mondays, 12:30 p.m. to 3:00 p.m., January 8 - March 25

(12 day class; 30 hours total)

Class size: Minimum 3 - Maximum 10.

Cost \$55 for Oshkosh residents and \$60 for non-residents. Bird cutout & eyes included.

Registration is open!

Basic Machine Safety Training (Woodshop) - Jeff Becker

Any NEW participants wanting to use the OSC woodshop machines for classes or "Guided Hours" are required to attend machine safety training class. Both days are required. Training materials will be provided. Upon completion of this class participants may use designated machines in the woodshop. Training is good for one year from date of training.

Fridays. January 19 & 26 10 am - Noon

Register by Friday, January 12, 2024

Cost: \$5 Oshkosh Resident / \$7.50 (nonresident)

3RD ANNUAL SPRING SEMINAR CARICATURE CARVING CLASS WITH FLOYD RHADIGAN

Only One Seat Left!

IN APRIL 2024 AT STEVENS POINT

Dates: Wednesday, Thursday & Friday, April 3-5, 2024

Cost: \$ 160 for 3 days plus roughout cost (~\$15-40 per roughout)

Place: Lincoln Center, Stevens Point, WI

Sponsored by the Wisconsin River Woodcarving Club



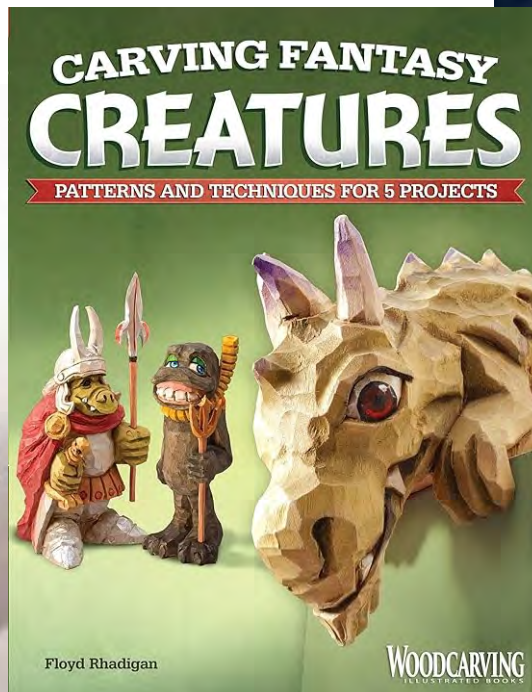
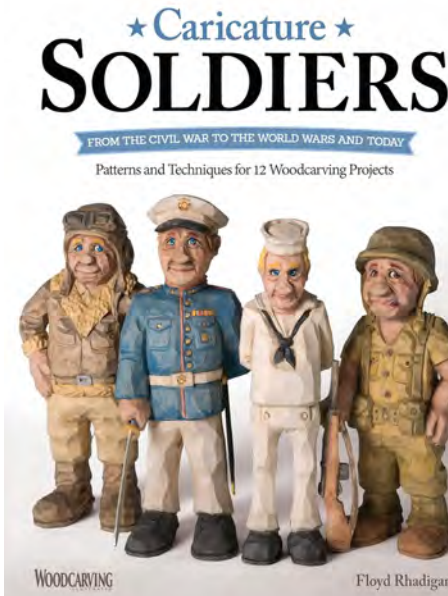
Floyd's
Wood Carving



Floyd Rhadigan describes his style as a mixture of Ozark & Scandinavian Flat Plane Carving.

He has been carving for over 50 years and has authored several books on caricature carving. Floyd won Best of Show in the 2005 CCA competition and is a member of the Caricature Carvers of America.

A couple of Floyd's books.



Online Woodcarving Lessons (that don't cost an arm & a leg)



The Woodcarving Academy offers:

- (1) online video courses by subscription for many different types of carving from a roster of carvers; and
- (2) separate online live classes for a per course fee. The live classes are not included in the subscription. See woodcarvingacademy.com

Subscription Offerings- Recorded video instruction from two dozen instructors:

Free membership Plan

Access to the sample videos

Paid Membership Plans

Full unlimited access to all the videos during the subscription period.

Monthly

\$19.95 Recurring

Quarterly

\$49.95 Recurring

Yearly

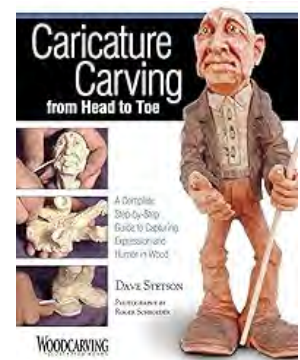
\$139.95 Recurring (Save \$100)

The subscription plan teachers include:

Caricature Carvers:

Dave Stetson (CCA*, 16 videos);
Floyd Rhadigan (CCA, 4 Videos);
Ryan Olsen (CCA, 7 Videos);
Mark Akers (3 Videos);
Rich Wetherbee (CCA, 3 Videos);
Dwyane Gosnell (CCA, 14 Videos);
Tom Wolfe (CCA, 5 Videos).

Kevin Applegate (CCA, 9 Videos);
Pat Moore (8 Videos);
Dale Green (CCA, 6 Videos);
James Miller (5 Videos);
Bob Hershey (CCA, 8 Videos);
Mitch Cartledge (CCA, 2 Videos);



* Caricature Carvers of America Member

Realistic Carvers:

Stu Martin (4 videos);
Janet Cordell (10 Videos);
Maddy Kloeber (2 Videos);

Jim Redhawk (8 Videos);
Dylan Goodson (3 Videos);
Donna Menke (3 Videos)

Relief Carvers:

Dylan Goodson (5 Videos);
Randy Stoner (2 Videos)

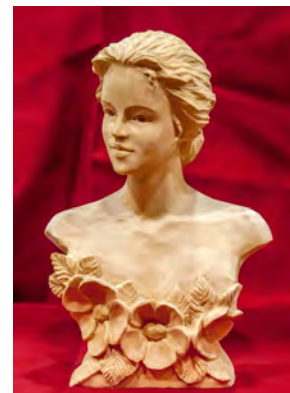
Fred & Elaine Stenman (3 Videos);

Chip Carver:

Carolyn Halbrook (8 Videos)

Wood Spirits and Walking Sticks:

Mark Gargac (5 Videos)



Online Woodcarving Lessons (that don't cost an arm & a leg)



Free Membership - 6+ hours Beginner Lessons plus Guides on tools, sharpening & suppliers

Paid Membership - Full unlimited access to All Lessons plus downloadable templates and livestream every two weeks

Monthly - \$14.99 recurring

Full Year - \$159.99 nonrecurring (10% discount) plus can renew at \$129.99

Mary May is author of the book "Carving the Acanthus Leaf."

For more info and sample lesson:
<https://www.marymaycarving.com/carvingschool/>

Welcome to the wonderful world of woodcarving!
Join me, Mary May, and learn the art of traditional woodcarving through online instructional videos.
We currently offer **288** full-length basic, intermediate, and advanced lessons (currently **611** individual episodes), with a new, HD episode added every week!
Read more about my [woodcarving journey](#).



If you want to carve like Grinling Gibbons learn from this guy!

Alexander Grabovetskiy On Line Courses \$22.95 per month Full access to all video courses
\$229.99 For full year Full access 3000 video segments

Key Points:

Classical design development for carving—the ancient art of design
How to think in 3D before you carve—the art of composition
How to properly use wood carving tools for safety and efficiency
How to work with wood grain issues
How to carve a classical design applicable to any type of woodcarving (furniture, ornamental, architectural)
How to sharpen wood carving tools fast and efficiently
Tips and tricks on how to get the most out of your carvings

Named International Woodcarver of the Year by the UK's Woodcarving Magazine.

For on line courses go to: <https://schoolofwoodcarving.com>



*Places to Go Carving: Appleton, Berlin, Fond du Lac ,
Scandinavia, Oshkosh, Green Bay, Princeton, Waupaca, Wausau*

Thompson Center on Lourdes (TCoL), at St. Bernadette Center, 2331 E. Lourdes Drive, **Appleton**, WI
Room 209 at South Building (St. Bernadette School), (door by elevator).
Fridays, 9:00 a.m. to noon - Cost: \$2 daily fee. All ages.
New carvers are welcome! You must register ahead of time(920) 939-3088.
See www.thetcol.org for details.

Berlin Senior Center, 142 Water St., **Berlin**, WI 54923 (920) 361-5422
Wednesdays, 9:00 a.m. to Noon - Cost: Free.
We typically have about 12 people wood carving.

Fond du Lac Senior Center Woodcarving Club, 151 East 1st Street, Fond du Lac, WI 54935
tel: (920)322-3630, Mondays, 9:00 a.m. - 11:30 a.m.
Yearly membership (age 50+) is \$10. New members always welcome.
Call to register (920) 322-3630.

ADRC Woodcarvers Group (Aging & Disability Resource Center of Brown County)
300 S. Adams Street, **Green Bay**, Wisconsin, Tuesdays, 8:30 a.m. to 10:30 a.m. - Cost \$2/day
Bring hand tools (no power allowed), wood & project e.g. caricature, chip carving, bark, fish, animals,
holiday, etc. No classes, but experienced carvers will help re: tools, sharpening, painting, etc.

Iola Chippers & Sippers, Scandihaus Coffee Shop, 280 N. Main St., **Scandinavia**, WI
Tuesdays, Noon - 3:00 p.m.
No Fee. Informal group. All skill levels. New carvers welcome.

Oshkosh Seniors Center (OSC), North Building Woodshop, tel: (920) 232-5311
200 North Campbell Road, **Oshkosh**, Wisconsin
Woodshop safety training required for machine use in woodshop. (See Current newsletter).
Woodshop has Guided Hours to work on projects in woodshop on Wednesdays.
Classes offered in both North(Woodshop) and South Bldgs. See Newsletter.

Princeton Carvers, American Legion, 853 W. Main Street, **Princeton**, WI
Tuesdays, 8-11 a.m. - Cost: \$2 daily donation to the Legion.
An informal group of 4-6 people meet Tuesdays to carve and woodburn. New carvers welcome.

Waupaca Senior Center , 407 School Street, **Waupaca**, WI (715) 258-4437
Wednesdays 8:00 a.m. to 1:00 p.m. Enter at School Street entrance.
Yearly membership (age 55+) is \$15 -\$20 depending on residence. Waupaca
Woodcarving Club plus Senior Center carvers, typically 20-25 people meet.
New carvers welcome.

Wausau Area Carvers, Forest Park Village, 2901 N. 7th St., Wausau, WI
(South side of Building, Ground Level; door is marked "Legacy Woodworking Academy")
Tuesdays 10 a.m. to 1 p.m.; Thursdays 5:30 - 8:30 p.m.
Contact Cheryl Ruplinger at cherriruplinger@gmail.com

Woodcarving Annual Show Calendar

2024 Southwest Florida Wood Art Exposition & Competition

Charlotte Harbor Event & Conference Center, 75 Taylor Street, Punta Gorda, Florida

January 12-13, 2024

2 Day woodcarving & woodturning show & competition, tool & wood vendors.

For details & entry forms see: <https://swflwoodartexpo.org>

38th Annual Rio Grande Woodcarvers Show 2024

Nomad Shrine Club, 1044 W. Nolana Loop, Pharr, TX 78577

January 19-20, 2024

2 Day woodcarving show & competition, tool & wood vendors.

For details & entry forms see: <https://www.rgvwoodcarvers.org/rgv-woodcarving-show/>

The Woodworking Show Milwaukee (Trade Show)

[More information to come]

February 16-18, 2024 12-6 (Fri) 10-6 (Sat) 10-3 (Sun) Admission \$?? (for all 3 days)

Under 15 free Open to Public. About 50 vendors. Typical attendance ~7,000.

International Woodworking Trade Exhibition for veneers, carving tools and machinery, dovetail jigs, shop safety, dust collection, measuring devices, anything related to woodworking or DIY. Tools, adhesives, exotic woods, stationary machinery, dowels, legs, shop equipment, time savers, measuring devices, finishing tools and products, cabinet tools and hardware, turning tools and supplies, etc.

<http://www.thewoodworkingshows.com/buy-tickets.html>

The 31st Kettle Karvers Klub Artistry in Wood Woodcarving and Wood Sculpture Show

April TBD, 2024, 10:00 am to 4:00 pm.

Emil Mazey Hall, **Plymouth, WI**

Demonstrations, Judged Competition, Vendors, Food

www.kettlekarvers.org

Oshkosh Bird Fest

Saturday, May 4, 2024 at TBD

For more event information check the Bird Fest website: <http://www.oshkoshbirdfest.com>

The 48th Annual Mid-Wisconsin Chippers Woodcarving Show, Competition & Sale

"The Oldest Annual Woodcarving Show in the State of Wisconsin"

Sunday, May 5, 2024, 9:00 am to 4:00 pm. Admission: \$5 Age 12 & under free

The Oshkosh Convention Center, 2 North Main St., **Oshkosh, WI**

between the Leach Amphitheater & the Best Western Premier Waterfront Hotel.

The 56th International Woodcarvers Congress sponsored by the Affiliated Wood Carvers

Jackson County Fairgrounds, Maquoketa, Iowa

June 8-15, 2024 Instructors will be: John Engler, Ryan Olsen, Randy Hansen, Vic Hood, Roger Nadrchal, Carol Leavy, Bruce Shostak, Jan Jenson, Jeff Phares, and Alex Grabovetskiy.

Competitions, Seminars, Show Judges will be: Ryan Olsen, Roger Nadrchal, and Greg Wirtz

For membership & more information: www.woodcarverscongress.org

Mid-Wisconsin Chippers 2023-2024 Membership Form

The Club Year runs from September 1, 2023 through August 31, 2024.

Date _____ New member _____ Renewal _____

Check _____

Cash _____

Name _____ Spouse _____

Address _____

Phone(s) _____

Email _____

Dues are \$20.00 per year. Make check payable to: Mid-Wis Chippers (Dues)

Bring to meeting or Mail to:

Bill Tuchscherer,
714 Coolidge Street,
Neenah, WI 54956

Thank You for Your Support of Our Club.



MID-WIS. CHIPPERS

BE ON THE SPRING SHOW FLOORPLAN MAP BY REGISTERING EARLY!

2024 Mid-Wisconsin Chippers (MWC) 48th Annual "Artistry in Wood"

Woodcarving Show, Competition & Sale - Sunday, May 5, 2024 - 9:00 am to 4:00 pm

The Oshkosh Convention Center, 2 North Main Street, Oshkosh, Wisconsin

Downtown Across from Best Western Premier Waterfront Hotel & Ground Round Restaurant.

Ask before April 1 for Special Hotel Rate!

Over 500,000 people live in a 25 mile radius of Oshkosh!

Mid-Wis. Chippers Show Table Registration Form

(Judging Entries must be registered on Show Day from 6:45 to 8 a.m.

Judging starts promptly at 8:00.)

Name: _____

Address: _____ City: _____

State: _____ Zip: _____ Phone: (_____) _____

Email: _____

Join/renew membership in the Mid-Wis. Chippers only \$20 (Sep-Aug): New Renew \$_____

Please reserve the following show tables (You must have a Show Table to Enter the Competition):

Mid-Wis. Chippers Club Member _____ Tables @ \$20.00 (\$25 after January 1, 2024). \$_____

Are you sharing a Table (See page 2)? If so with whom? _____

Non-Member Artist _____ Tables @ \$25.00 (\$30 after January 1, 2024).....\$_____

Are you sharing a Table (See page 2)? If so with whom? _____

Club Tables _____ @ \$30.00 (\$35 after January 1, 2024).....\$_____

(Only one entry per participant at Club Tables.) List Club Table Participants on page 2.

Competing Youth (under age 18), there is no cost, but indicate Sponsor (See page 2.)

Sponsor: _____ (See page 2 for more information.)

Commercial Tables _____ Tables @ \$30 (\$35 @ after January 1, 2024).....\$_____

Special Needs/Comments: _____

I, _____, will display my own work and grant permission for photographs of my entries and displays to be used by the Mid-Wis. Chippers for promotional purposes. I will not hold the Mid- Wisconsin Chippers Woodcarving Club or The Oshkosh Convention Center/Best Western Premier responsible for loss or damage to my work.

Enclosed is check # _____ in the amount of \$_____.

Signature: _____ Date: _____

Important: Return this entire form with your fee*. Mail by April 1, 2024 (April 15 final deadline for late registration.)

Make checks payable to Mid-Wisconsin Chippers.

*** Fees current as of May 1, 2023.**

Mail to: Paul Wolters, 1273 Meadow Lane, Neenah, WI 54956

Please print and return entire form.

Keep a copy for your records.

Rev.: 4/22/2023

TABLE SET UP BEGINS AT 7:00 A.M.

TABLES MUST REMAIN SET UP FROM 9:00 A.M. UNTIL 4:00 P.M.,

NO EARLY PACK UP.

- Table Fee includes admission for registrant & one helper (two total), except Club Table admission is only for participants (six total).
- **Sharing a non-club Table** - Each participant pays the full table fee & has 4 entries. (Some share a table for their convenience or because they are only bringing a few items for display.)

Club Table Participants: (Only one entry for each participant; Limit 6 for Judging):

a) _____ b) _____
c) _____ d) _____
e) _____ f) _____

- *****
- **Competing Youth** may enter their carvings through the Youth Group Table or through a Sponsor such as a Club Table or Artist Table whether member or nonmember. The competition fee is waived for Youth under the age of 18 with a maximum of two (2) competition entries per individual. Carvings are required to remain on display at the Sponsor Table throughout the Show except for the time of Judging.
 - **Youth Group Table** - Members of a recognized Youth Group are encouraged to exhibit their carvings at our show by registering for a no charge Youth Group Table. We require a list of participants, ages & organization name and city.

Current Skill Levels of Competition: Youth Novice Intermediate Open Masters

Current Competition Categories: (See Judging Entry Form for rules & number of entries allowed.)

- | | | |
|--------------------|-------------------------|-----------------------------------|
| 1. Waterfowl | 10. Human | 19. Interpretive/Stylized |
| 2. Song Birds | 11. Relief | 20. Carved Canes & Walking Sticks |
| 3. Game Birds | 12. Group* | 21. Pyrography |
| 4. Shore Birds | 13. Mythical | 22. Pyrography With Color |
| 5. Birds of Prey | 14. Santas | 23. Pyrography - Human |
| 6. All other Birds | 15. Caricature | 24. Gourds, Carved and/or Burned |
| 7. Fish | 16. Amphibians/Reptiles | 25. Intarsia |
| 8. Marine Mammals | 17. Religious | 26. Bark Carving |
| 9. Mammals | 18. Chip Carving | 27. Misc.(Any other woodcarving) |

*A group is two or more subjects on one base, e.g. two adult male chickadees on a single base is eligible for either the group category or the song bird category.

Note: Entry officials may override the choice of category.