

Register now - 2024 Chippers Show Table \$25 for members

Whittle Bits and Pieces

Mid-Wisconsin Chippers Newsletter for January 2024

Club President : Tim Gosz Vice-President: Duane Foote

Treasurer: Bill Tuchscherer Secretary: Cedric Richeson

Annual Show Director: Paul Wolters

Visit our Website at: <http://midwisconsinchippers.weebly.com/>

Happy New Year!

Next Meeting **Sunday**, January 7, 2024

**Master Carver Bill Kempen on
How to Carve a Blue Ribbon Winner**

Gloria Dei Lutheran Church, 1140 Tullar Road, Neenah, Wisconsin
Board meeting 12:30 p.m. General Meeting 1:30 p.m. Library Open.

Bring your carvings & pyrography for Show 'N Tell!



*The Chippers Club logo:
"The carver on the stool"
was created by Bob Yancey
MWC Club President
from 1984 - 1985.*



Bill Kempen's Best of Show Warbler from the 47th annual Mid-Wis. Chippers Show.

Table of Contents

Meeting Calendar, Location.....	Page 2
Club Library News.....	Page 3
December Club Report.....	Page 3
Menasha Public Library Display.....	Pages 4-5
Christmas Potluck Photographs.....	Page 6
Show 'N Tell from December Meeting.....	Pages 7-9
OSC Pyrography on Leather Class Photos.....	Page 10
Power Carving - Making Sense of Buying Burs.....	Pages 11-18
Potential Woodcarving Class Surveys.....	Page 19
2024 Chippers Show Info and Volunteer Requests.....	Pages 20-22
Friendship Cane Theme.....	Page 23
NEWWG January Talk by Annette Aubinger Therapy through Whittling	Page 24
Oshkosh Senior Center Woodshop Open House on January 25th.....	Page 24
Oshkosh Senior Center Carving, Pyrography & Woodshop News.....	Pages 25-26
Online Woodcarving Classes.....	Pages 27-28
Places to Go Carving in Mid-Wisconsin	Page 29
Annual Woodcarving Shows List (Updated).....	Page 30



2023-2024 Club Meeting Calendar:

- ✓ August 27 Visual Aides for Woodcarving by Chris Rigotti
- ✓ October 1 Carving Competitions Part I The Basics
- ✓ November 4 Ice Sculpture Carving Demo by Paul Salmon of Krystal Kleer Ice Sculptures
- ✓ December 3 Christmas & Holiday Potluck
- January 7 Carving Competitions Part II Making a Blue Ribbon Winner by Master Carver Bill Kempen**
- February 4 Carving a Button Tufting Pattern by Master Carver Richard Young
- March 3 *Panel - Pyrography Challenges - skin tones, clouds, foliage, feathers, scales & more*
- April 7 **Show Preview, Judging Pre-registration, Friendship Canes, Elections**
- May 5 48th Annual Show at Oshkosh Convention Center**
- May 19 1:30 p.m. Show Review**

Regular Club Meetings

The Mid. Wis. Chippers Club meets at Gloria Dei Lutheran Church, 1140 Tullar Road, Neenah, Wis. (by Neenah High School) on the first Sunday of each month **(except as noted.)**

Meetings are at 1:30 p.m. (except our December potluck with a noon setup & lunch at 1:00 p.m.)

Board meetings are at 12:30 p.m. (No Board meeting in December.)

Club Webmasters:
Josie Hartzke & Jackie Silva

Librarians:
John Goheen & Duane Foote

Mid-Wisconsin Chippers Woodcarving Club (MWC) Board

Barb Behm Rodney Manthey
Gene Bengel Keith Melzer
Steve Binder Chris Rigotti
Dick Krummick & the Officers

*2023-2024 Club Year Begins
Dues \$20 are now past due!*



*Thanks to the 65 people who
have paid their 2023-2024
dues!*

December Club Report

No Board meeting in December.

Chuck Butzlaff was elected at the December general meeting to fill the vacant Board position. Congratulations Chuck and thank you for serving.

The general meeting was opened at 1:33 p.m. by President Tim Gosz. Total attendance was 35.

A sign up sheet to gauge interest in possible spring Josh Guge classes for a hawk, airbrush, habitat and/or brush painting or a Jan Jenson chip carving class was made available.

The Menasha Public Library in December has a display of club woodcarvings and pyrography. Paul Wolters coordinated the display (photos on page 4).

At 1 pm, the club potluck began. The Library was open thanks to our new cabinet. Show 'n Tell followed the potluck.

MID-WIS. CHIPPERS CLUB LIBRARY CATALOG IS ON LINE!

**Our club library book & magazine holdings, study casts and carving sticks are available on line at: <http://midwisconsinchippers.weebly.com/>
You can search books & magazines by category, title or author.**

Club members! Look on line for carving book or study cast. We have lots of reference materials. Then just bring your list to the meeting and retrieve the wanted items from our new book cabinet.

Ask Librarians John Goheen or Duane Foote, if you need help.

MID-WIS. CHIPPERS CLUB LIBRARY HAS A NEW CABINET!



Librarian John Goheen and our new library cabinet. The club now has room to add more books.

Menasha Public Library Display

December 2023

Photographs by Paul Wolters



Bill Kempen, Bill Tuchscherer, Tim Gosz & Paul Wolters set up the display at the Menasha Library.



Menasha Public Library Display December 2023

Photographs by Paul Wolters



Paul Wolters
Carver
"Lizzy"
Carved in basswood



Chris Rigotti
Neenah
"Santa"
Carved in basswood



Jayne Neuenfeldt
New London
"Grizzly"
Carved in basswood



Barb Behm
Winchester
"The Butternut"
Carved in basswood



Bill Kempen
Dakota
"Saw-Whet Owl"



Rodney Marthey
Apelton
"Trout"
Carved in basswood

Christmas & Holiday Potluck 2023

Photographs by Paul Wolters



The Club provided turkey and ham, buns, coffee, plates and utensils. The members brought an abundance of good eats, most home made!

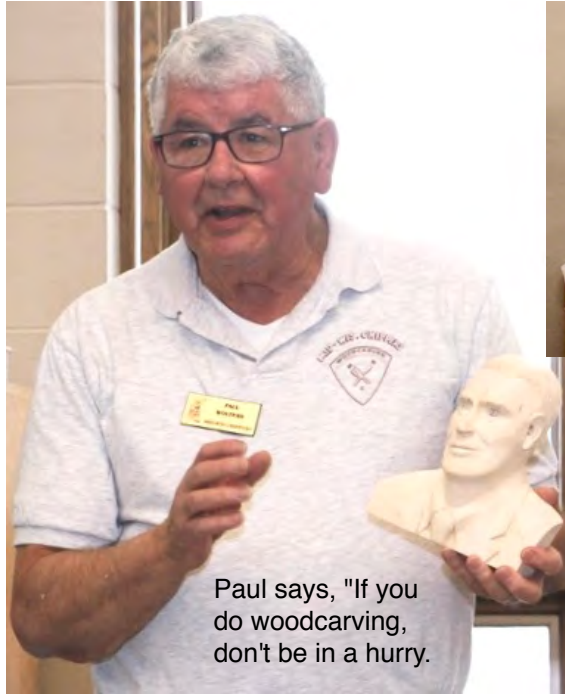


Good news!

At the January 7th meeting the club will have turkey & ham sandwiches for snack time!



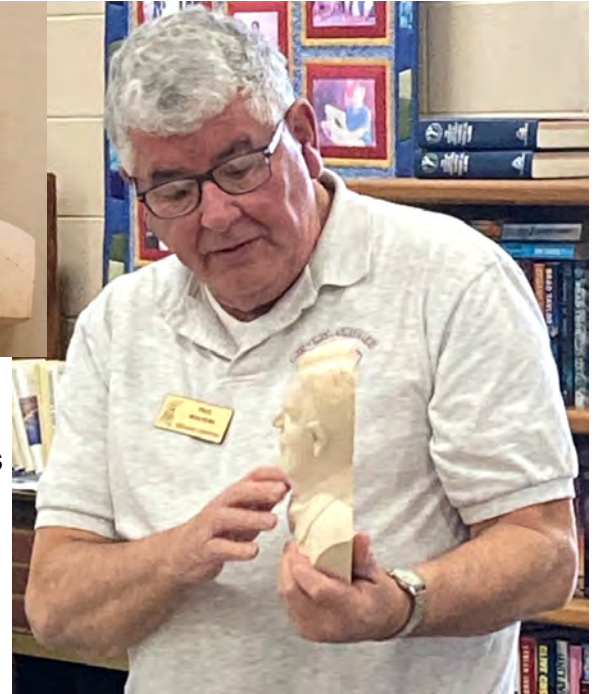
Show 'N Tell Photos - December 3rd Meeting



Paul says, "If you do woodcarving, don't be in a hurry."



Paul Wolters gets a lot of depth out of his relief carvings. Here is his rendition of John Bergstrom.



Don Weyenberg and son. Don made this fantastic house and equipped it with lights. Don also showed seedpod birds that he made. With imagination spurred by nature's beauty art expresses the joy of creation. Here we have a cabin made from found wood and milkweed birds.

Show 'N Tell Photos - December 3rd Meeting

Bill Wright brought a photograph of his phantasm of a frustrated woodcarver called Wilhelm, but the gallery lists it as "Duck Brains".

Made from plywood, basswood, and African paduk, it was painted with oils. Measuring 35" x 18" x 3" it was on display in December at the Art Garage Gallery in Green Bay.



Bill Tuchscherer made three trays.

He is holding one of zebrawood, above is box elder, and below a maple burl.

All are finished with woodturner's bowl finish by General.



Ahmed Pima showed a toothpick holder he turned from spalted maple and a fire starter with a compass.

Show 'N Tell Photos - December 3rd Meeting



Gene Bengel's Christmas Bear is carved from a Rich Wetherbee roughout.

Richard Young's fawn is carved from basswood.



OSC Pyrography on Leather Class



Paula Hayford, Cedric Richeson, Dave Sennholz, Terry Cheng & Paul Wolters made their marks.



The Wood Tinker Meets Tyro Tool of the Month Reminder: Leather gloves, apron & safety glasses are your pals.

Power Carving - Making Sense of Buying Burs

The Wood Tinker, aka the Basswood Beginner or Tupelo Tyro, makes a foray into Tyro Tool-land with a bit about power carving burs. This is a BIG field so we will whittle the scope down to hone in on bits/burs that are popular with songbird and small animal power carvers.

Caveat: This article is the rodomontade of a tupelo tyro's attempt to simplify buying bits for a novice power carver. This represents a Yuletide of reading and *lacks* the wisdom of extensive personal experience. In other words, the collected shavings of other carvers have been stewed together into the following potage.



Dremel with awkwardly located on off switch.

In the tinker's part of the world, the most common rotary handheld power carvers are made by Dremel, Pflingst, Foredom, Ram, Mastercarver and WeCheer. Similar carvers are made by Gesswein and NSK. The motor is typically either hung on a post in a flexible shaft system with a foot control or has a tabletop control with a micromotor in the handle.



The bits in these systems typically rotate up to 18,000 to 35,000 rpm in a flexible shaft system and up to 35,000 to 50,000 in a micromotor. Generally power coupled with low rpm removes wood fast, but higher rpms will cut smoother surfaces. One should make sure that the bits/burs used are suitable for the maximum rpms that will be used.

So what is the difference between a bit and a bur? We consulted Webster's heirs.

A bit is the replaceable part of a tool that provides the biting or cutting edge.

A bur (or burr) is a small rotary cutting tool e.g. a bit used on a dental tool.

So there you have it. The terms are essentially interchangeable.

Unless you are talking about a Scottish dentist, worry no more.

There are literally hundreds of carving bits on the market. After perusing the carving literature, the wood tinker's head was spinning like a whirlybird. To make sense of it all, the wood tinker focused on bits for handheld rotary carvers with collets accepting shaft diameters of 3/32 & 1/8 inch. This excludes both the 1/16 inch shaft bits used by compressed air powered tools and the large 1/4" shafted bits useful for hogging out and shaping larger carvings.

Understanding this multitude of bits can be simplified by examining them by (1) shape; (2) material; (3) size; and (4) brand.



The Wood Tinker: Power Carving - Making Sense of Buying Burs

Shape

The first television artist, Jon Gnagy, on his show "You Are an Artist" referred to four basic forms: cube, ball, cone and cylinder. (1)

Three of these forms can be made into rotating shapes having a surface defined by a line rotating about an axis (the shaft).

For this article, we consider a special type of cylinder - a circular wheel to be another form. Our multitude of bits can be placed into four groups similar to the four forms of cylinder, ball, cone and wheel.

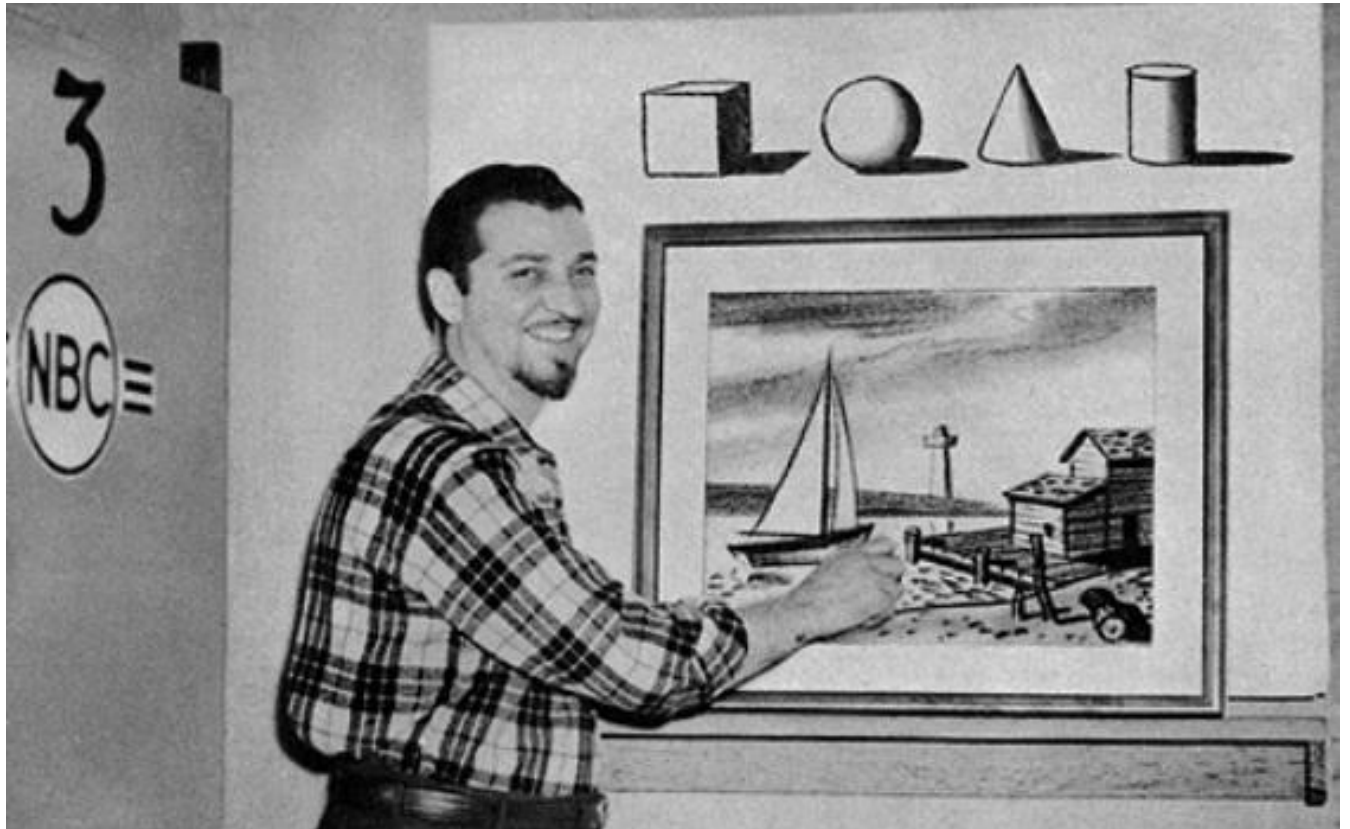


Jon Gnagy
1907-1981

(1) Gnagy's show debuted on May 13, 1946, being broadcast from the Empire State Building in New York City for NBC.

It later switched to CBS under the name "Learn to Draw" and ran in syndication to stations throughout the country until 1970.

Gnagy's show inspired many to become artists. Videos of his show are available on the internet at www.jongnagyart.com.



Jon Gnagy in his New York studio. Born in Varner's Forge, Kansas, the son of Hungarian-Swiss Mennonites, Gnagy was a self-taught artist who worked in Wichita as an advertising illustrator for local aircraft manufacturers Ceesna, Stearman and Beechcraft. Later he took art classes in Kansas City and at age 24 with wife and family moved to New York City. His subsequent jobs took him to Pennsylvania then the lecture circuit and his return to New York City and broadcast history.

Ball (Round) Shapes



Ball Oval Pear Flame

Cone Shapes



Small Cone Large Cone Inverted Cone

Cylindrical Shapes



Regular cylinder Bulnose cylinder Square cylinder

Wheel Shapes



Wheel

Starting with a cut out e.g. of a bird or animal, the phases of carving may be thought of as **(1) roughing, (2) shaping, and (3) detailing**. Roughing, sometimes called "hogging", is removal of large amounts to bring the carving to a rough general form, while shaping produces a refined smooth shape. The last phase furnishes fine details to the carving, adding texture that produces the character and personality of the sculpture. Various burs may be used in all three phases along with handtools and sanders.

The bur shape is the first consideration in choosing a bit because its shape defines the negative space that remains after removal of the waste material. Let us examine a little closer the nature of these shapes.

Ball

The ball shape is useful in producing concave surfaces. An appropriately sized ball may be used to make an eye socket or indentations, furrows and hollowed out areas. It may also make a cut similar to a U gouge.

Oval

The oval shape makes cuts very much like the ball, concave and may be a bit easier at rounding edges and creating lumpy textures. Also, called egg shaped.

Pear

The pear shape is very popular and used to make the bumpy, lumpy breast area feathers of birds as well as rounding edges. *Strangely, this shape may be referred to as an inverted pear, and a bulbous cylinder that angles back towards the shaft may also be called a pear.*

Flame

The versatile flame shape is used in all three phases, roughing, shaping, and especially in detailing. It can make concave shapes and hollow out. Its tip is like a V tool while the bottom makes a U tool cut. Sometimes a flame bit is referred to as a "bud" bur.

Small Cone & Large Cone & Inverted Cone

Cone bits are called "tapers", and sometimes "trees". These bits have many lengths and widths. Some have a truncated flat end, but most are round end tapers. A long thin taper reaches into tight spots & can detail hair and feather features. Large tapers are used for roughing out, rounding edges, and can shape transition areas between flight feathers and tail feathers. The inverted cone textures fur, hair, feathers and makes V tool type cuts.

Regular, Bulbous & Square Cylinders

*The **regular cylinder** can have an abrasive end or a smooth end (called a "safe end"). Safe end cylinders are more useful; the smooth safe end prevents unwanted end cutting. One of the most useful burs for roughing and shaping. It rounds edges, quickly removes relief areas, and makes V tool style cuts. The **bulbous cylinder** can do cuts similar to a ball & cylinder except the flat edge. The **square cylinder** is a shorter version of the regular cylinder. A safe end is preferred.*

Wheel

The wheel bit, aka disc or circle bit, is used to cut off pieces, make thin slices, stop cuts, and undercut feathers. It can come in different size diameters and thicknesses, and have different outer edge profiles. The most useful has a thin, plain, flat uniform circular edge.

Material

The hardness and wear resistance of materials is measured by the Mohs Scale of Hardness which is widely used by the jewelry industry. The Mohs number reflects the resistance of a material to being scratched or abraded: 1 is the softest material and 10 the hardest.

Common materials' Mohs #s: fingernail ~2.3; copper penny 3.2; pocket knife ~5.1; glass ~5.5; steel needle ~6.5; diamond 10. The Mohs scale is not linear. For example, going from Mohs 3 to 4 is an ~25% increase in hardness, while going from 9 to 10 is ~300%.

What does a Mohs number mean to a wood carver? Harder cutting edges **should** cut easier, and last longer, relative to soft edges, but cuttability is also affected by other factors e.g. grit size & configuration which affect how fast a bit can remove wood without clogging. Very hard materials are sometimes quite brittle and may break more easily.

The Wood Tinker: Power Carving - Making Sense of Buying Burs

So what types of hard materials are used in bits to scratch away wood? The cutting edges of bits are most commonly made with High Speed Steel (HSS), tungsten carbide, ruby, sapphire, diamond, silicon carbide, or aluminum oxide aka ceramic. If you are counting that is SEVEN differently named materials. And their cutting forms may vary too. Here is a chart of a few properties of the most common types. Note: this chart is a rough guide. Bits are not available in all grit sizes or dimensions. Max RPMs will vary too, as will quality.

Material	Mohs Scale	Cost	Max RPM	Collet Size		Diameter	Length	Other
				3/32	1/8			
High Speed Steel (HSS)	7-8	\$6-11		✓				
HSS cross-cut "stump cutter"	7-8	\$4-14		✓		1.2-10 mm	5-14 mm	
Tungsten Carbide Cutters	8.5-9	\$10-20	15,000	✓	✓	3/32 - 1/4 inch	1/4 - 5/8 inch	
Tungsten Carbide Point Bits -	8.5-9	\$12-20	24-25,000	✓	✓	1/8 - 5/8 inch	3/16 - 1 inch	
Aluminum Oxide	9	\$2-4	35,000	✓		5/32 - 1/4 inch	5/32 - 7/16 inch	white (fine) pink(coarse)
Ceramcut aluminum oxide	9	\$2-4	45,000	✓	✓	3/32 - 1/2 inch	1/8-3/4 inch	blue 80-120 grit
Ruby	9	\$10-20	35,000	✓		3.5-11 mm	4.5-19 mm	
Sapphire	9	\$13-14		✓		4- 7 mm	8.5-12 mm	bi-directional
Silicon Carbide	9-9.5	\$2.50	35,000	✓		5/32 - 1/4 inch	5/32 - 7/16 inch	green stone med grit
Diamond Plated	10	\$5-22	35-50,000	✓		1.2-10 mm	1.2-15 mm	
Diamond Sintered	10	\$10-18	8,000	✓		3-10 mm	2-14 mm	

A note about mail ordering burs: it is worse than you might expect. Aside from suppliers using different names for the same shape, on line catalogs have other errors. One large supplier lists several "8 mm" burs all of which have a 0.5 inch diameter. Which is it? The basswood beginner knows that a half inch is 12.5 mm. So it remains a mystery as to what the 8 mm refers. That same supplier has a home page "shop by category" link labelled "carving burs" that takes you to a page listing a single palm tool gouge, no burrs. At least their search function works, sort of. Most suppliers provide scant information about their burs, so buyer beware!. Sometimes if you are lucky, you may see information about maximum rpms, directional limitations, country of origin, or manufacturer, but not usually.

High Speed Steel (HSS) Single or Double Cut

Ordinary steel is iron plus carbon which makes it stronger than iron alone. High speed steel (HSS) developed in the early 20th century. HSS has tungsten and cobalt added to make it harder and more abrasion resistant than common steel. HSS is an **inexpensive** material that makes good power carving bits. The flutes of HSS bits can be formed single cut, or double cut at a mirrored angle. Single cut edges wrap around in one direction, double cut in two. This affects their cuttability with respect to the grain. The double cut produces a smoother surface. Some HSS is sold as **Vanadium Steel**. It is an HSS alloy having added vanadium to increase wear resistance.

High Speed Steel (HSS) Cross-cut "Stump Cutter"

The flutes of these HSS bits are cross-cut at 90°. The cross-cut produces rows of teeth that cut a smoother surface than the double cut HSS bits. Available in coarse, fine or extra fine cuts. Jaymes offers a carbide stump cutter with a slightly different design from the usual German made HSS stump cutters. Some are bi-direction and some not.

Tungsten Carbide Cutter

Tungsten Carbide is harder than HSS and cuts 4-7 times faster. It is also more brittle. While it is tougher, wearing longer, it may also be easier to break than HSS.

Tungsten Carbide Point

Tungsten Carbide Point Bits combine the less brittle HSS bodies with the harder carbide cutting edges. These are the well known and colorful Kutzall, Saburr, and Typhoon cutters.

Aluminum Oxide, Ruby, & Sapphire

Aluminum oxide (Al_2O_3), also called alumina, can be found as a natural mineral **corundum**. It is usually brown or gray, but colorless when pure. Corundum is calcined (heated to extremely high temperatures to drive off all water) and most often is used as the grit on sandpaper (silicon carbide is also used as sandpaper grit). Aluminum oxide is an extremely hard, Mohs 9, polycrystalline ceramic. Sometimes sales literature refers to a mixture of ceramic and aluminum oxide grit. This is a tautology. Aluminum oxide **is** a ceramic. This type of marketed bur is likely a mixture of fused (melted) and sintered (pressed together with heat, but not melted) aluminum oxide. Sintered aluminum oxide has thousands of fracture sites and a self-sharpening ability much higher than fused (melted) grain alumina. Natural corundum may contain trace elements including iron, chromium, titanium, or vanadium which may also be added in synthetic corundum. Ceramic aluminum oxides can be either natural or synthetic.

Often sold as a set of small shapes and sizes colored white for fine grit (400), and pink for a coarse (80-150) grit. Freedom markets a blue colored ceramic aluminum oxide set under the trademark Ceramcut that is either 80 or 120 grit and also comes sized for 1/8" and 3/32" collets. It is rated for a max 45,000 rpm.

Rubies are red colored, chromium containing aluminum oxide and may be either natural or synthetic. **Sapphires** are also aluminum oxide and are typically blue from having iron and titanium, but sapphires may also vary in color depending upon the types and amounts of trace elements. (Rubies are considered a red sapphire).

All these aluminum oxide based stones have a similar hardness, and may come in different size grits. Slight variations in purity and trace minerals may cause slight variations in hardness and wear resistance. Aluminum oxide, ruby and sapphire bits have particles bonded to a steel shaft and body.

Silicon Carbide

Silicon carbide (SiC) is found naturally as **carborundum** and is as hard as, or slightly harder, than **corundum** minerals. Silicon carbide is often sold a green colored (300 grit) set with similar shapes and sizes to the Al_2O_3 sets.

Diamond

Diamonds rate a 10 (the hardest) on the Mohs scale, while corundum i.e. Al_2O_3 , sapphires and rubies are a 9, and Silicon Carbide around 9.5. Diamonds tend to be the most expensive and the burs are usually small. Plated diamond bits have a layer embedded in the surface of the bur body while sintered diamond burs have diamond in a matrix (multiple layers). An inexpensive set of 20 small (1-2.7 mm) sized bits or ten larger (1.6-6 mm) plated bits is available from SumaLapidary.com for \$16 per set, or a large (6-10 mm) size sintered 10 piece assortment sells for \$82.

Brands

Many bits are made by dental industry manufacturers and several lines are manufactured in the USA, Germany, Switzerland, or China. Studies have shown that the wear resistance of similar bits made by different manufacturers can vary significantly. Unfortunately most bits sold to wood carvers are unbranded, or only list an importer like Floxite.

We do know there are 3 major players for carbide point bits: Kutzall, Saburr, and Typhoon (Foredom brand), all made in the USA. Kutzall's original burs have their carbide points in a random arrangement while Saburr and Typhoon are in rows. Reportedly the original Kutzall random arrangement is more difficult to clean after getting clogged. Kutzall Extreme appears to be similar to Saburr. Saburr tends to be less expensive.

What does it all mean"

The Tupelo Tyro suggests that for a given shape and size, picking the hardest material would be a good starting point. Then factor in the quality of the manufacture and the bonding of the cutting surface to the bit body and of course the rpms that you intend to run at. In reality, not all materials are available in all sizes and shapes. Price may also be a consideration. So which shapes? The Wood Tinker thinks you won't go wrong if your

The Wood Tinker: Power Carving - Making Sense of Buying Burs

first bur is a regular cylinder with a smooth end; that's a safe bet, e.g. a 1/8" collet Saburr carbide point that is ~1/4" diameter and ~1/2" long. Next on the Tinker's list would be a large taper e.g. a 1/8" collet, Saburr, then an assortment of flame, pear, taper and ball shapes with a 3/32 collet between about 3 and 11 mm in diameter e.g. super coarse ruby carvers. The wheel & inverted cone shapes are for special uses, and the bulbous and square cylinders are secondary too. An el cheapo diamond plated set is a good way to try several shapes before springing for large sized sintered diamond burs. But that is just a neophyte's blather, you better check with an experienced power carver first for a reality check. Let's look at what a well known power carver uses.

What does a pro use?

The carver authors in general do a poor job of specifying the brand and size of the bits they use. They are a bit better at revealing the shape and whether it is fine, medium or coarse grit. The Wood Tinker suspects that they have bought burs at shows just like the rest of us and just eyeballed the size and shape, never recorded the dimensions or details (they were too busy carving). They found what they liked, went on. Later somebody asked them to write a book. Anyway here is what the Wood Tinker found by perusing the writings of one of the best author/carvers, Rosalyn Leach Daisey.

Rosalyn Leach Daisey

Rosalyn Daisy for roughing out uses both 1/4" & 1/8" burs favoring fine grit for tupelo and coarse for basswood. Daisey likes to use a lot of super coarse ruby carvers. Wood Tinker surmises the ruby bits offered by many retailers all come from the same Swiss manufacturer, likely through a NJ importer named Floxite Co., Inc.. They all pretty much say: regular ruby carvers (fine grit; no band on the shaft); ruby trimmers (80 grit with a green band on the shaft) ; and super coarse (black band; said to be 50% more abrasive than the 80 grit ruby trimmers and twice as abrasive as the regular ruby carvers). Well, out of space, the Tinker's rodomontade must end; here's a bit more of what Daisey uses.

Phase	Shape	collet	Diameter	Length	Grit	Type	Brand
Rough	Cylinder†	1/8"	5/16"	1/2"	Coarse	Carbide Point	Typhoon
Rough	Flame	1/8"	7/16"	5/8"	Coarse	Carbide Point	Typhoon
Rough	Bud (Flame)	1/8"	5/16"	3/4"	Coarse	Carbide Point	Typhoon
all phases	††	3/32"			Super Coarse	Ruby	? - Swiss
Detail	†††				Fine	Al ₂ O ₃ - White	

† One of Daisey's favorite bits is a fine grit Typhoon cylinder for carving tupelo wood.

†† Referring to the Hummul catalog Daisey uses Super Coarse Ruby Carvers having SKUs RSC-16, 17, 18, 19, 20, 23, 25, and 30. RSC-30 is the largest being an 8 mm taper. The shapes also include a small ball, several flames, a cylinder and a pear.

††† Daisey dresses cylinder or taper shaped Al₂O₃ stones to be more bullet shaped. She uses these instead of sanders, but provides little additional information.

Time to Secure Your 2024 Show Table!

Member Table Rates are \$25 per table.

Interested in taking a Woodcarving Class taught locally in 2024?

Possible Classes: Chip Carving, Bird Carving, Airbrush Painting, Brush Painting or Habitat.

The Club is asking its members to indicate serious interest in specific classes. We will take care to minimize conflicts and overlapping dates. Classes would be set up at a location in the Appleton to Oshkosh area, most likely in Neenah at St. Marks Lutheran Church. We have several excellent instructors in mind. *Possibilities* include:

Airbrush class by Josh Guge; typical cost \$100 for a one day class on a Saturday.

Brush Painting class by Josh Guge; typical cost \$200 for a two day class.

Habitat class by Josh Guge; typical cost \$300 for a three day class.

1/3 Size Goshawk Class by Josh Guge, typical cost \$ 400 for a four day class.

Chip Carving class by Jen Jensen; typical cost \$100-\$150 for a two day class, Th-F, or F-Sat.

The above classes may also have a small material fee.

Before the club contacts a master carver and makes a *commitment* for our club to sponsor a class, the club will need *commitments of interest* from enough club members. What is a "enough"? Depending upon the class, six to ten students. Serious Interest Sign-Up Sheets will be at our Sunday Potluck meeting. Please let the club know this Sunday! If you are interested, but cannot make the meeting, e-mail your particular interest to cedricheson@icloud.com.

MID-WIS. CHIPPERS WOODCARVING CLUB MAY 5, 2024 SHOW, COMPETITION & SALE AT THE OSHKOSH CONVENTION CENTER

Oshkosh is Event City. Make it a weekend. The day before our show you can check out the EAA Aviation Museum, Oshkosh Public Museum, Military Veterans Museum & Education Center, Paine Art Center & Gardens and more.



The Best Western Premier Waterfront Hotel & Conference Center connects to The Oshkosh Convention Center.

The Mid-Wis-Chippers Club website has current information, forms, articles, and photographs from club events and meetings. Go to: <https://midwisconsinchippers.weebly.com>



48th ANNUAL SHOW!

The Mid-Wis. Chippers needs volunteers now!

To learn the ropes of creating a great woodcarving Show, Sale & Competition.

We need volunteers for hospitality, registration, admissions, publicity.
Other important tasks for success are recruiting exhibitors, vendors, judges.

Email cedricheson@icloud.com to volunteer or sign up at the club meeting.

Hospitality.

Hospitality involves:

1. Prepare Welcome Packets & Thank You cards before the show day. Mail thank you cards to non-attending raffle donors.
2. Distribute Welcome Packets on show day before 9 am. Place Table Number Cards in the proper location on Show tables, along with the welcome packets.
3. Show Day Set Up Checker: At 6 am. the venue workers should have the tables, chairs, door locks, carts etc. all in place. The checker verifies this and tells the Club's Show Director if any deficiencies need to be addressed (e.g. popcorn mess on floor from prior night event needs to be cleaned up).

Registration Volunteers

1. Volunteer & Vendor Registration - At the show first thing (6 a.m.) to: (1) put up signs; and (2) register & wristband volunteers, exhibitors, and vendors and provide a show program to guide them to their tables. The times are from 6 am to the show opening at 9 am, these volunteers work shifts of an hour or more. At least four volunteers are needed. Also, order any needed wristbands.

2. Judging Registration - This involves knowledge of Judging Rules & Procedures. Times are early. These volunteers, directly following their check in at the Show registration table, proceed to set up & check the Judging area including table set up & category cards, directional signage, Judging Registration table coverings, and the paraphernalia associated with judging registration.

These volunteers also register the carvings for judging and some of the volunteers act as "runners" to place the carvings in their proper place for judging with their class & category designations intact.

Six to nine people are needed depending upon the number of entries. (4-6 registrars plus 2-3 "runners.") The time is from about 6:15 - 8:00 a.m. (Need to arrive at 6:00 in order to get checked in as volunteers.)



48th ANNUAL SHOW!

Admissions Volunteers

Admissions involves taking money, placing wristbands on show attendees, providing show programs and directions. Wristband start and stop numbers are logged to track attendance. Also, checking in late arrival vendors, volunteers and Presenters. They get special exhibitor/volunteer wristbands. Lots of time slots from 9 am to 4 pm. Volunteers here typically work in 1-2 hour shifts.

Mid-Wis. Chippers Club Table Volunteers

Answer questions, sign up new members, sell club patches, hand out club newsletters, 2025 Show fliers and table registration forms. Set up Club history photo albums. Be an ambassador for the club, and woodcarving. Provide information about upcoming carving events and other club's shows and classes.

Distribute and collect Show surveys. Set up Posterboard displays on tables for any last minute exhibitor cancellations (there are usually one or two).

Volunteers here typically work in 1-2 hour shifts.

Recruiting exhibitors, vendors, judges

People are needed to prepare & mail out table registration forms, Judging Rules & entry forms, and show promotional material. This mailing solicits carvers outside of our club to join us as exhibitors & competitors at our show. In 2021 we solicited 45-50 carvers from outside our club including contacts at 8 area carving clubs. 38 non-club member carvers had one or more tables at our 46th annual event. We also had club tables from three other clubs. This is usually a one time mailing sent out in the fall.

We similarly solicit vendors.

Judges are a special solicitation which is usually done by one or more of our Board members who has contact with master carvers from other clubs. Our membership likes to utilize outside judges.

Another key area is publicity

There are many aspects to publicity and always more avenues that might be explored.

1. Show Flyers - Flyers don't just happen. They are made & printed and handed out at club meetings, for members to use at fall and spring shows. They are widely distributed to family, friends, bulletin boards at stores, companies, banks, supermarkets, senior centers, and business acquaintances to promote the show. Doctors & dentists don't want to become advertising outlets, but YOUR doctor and nurse might not mind receiving a personal copy during your annual checkup. If you, your spouse, children, grandchildren, or siblings are employed, their place of employment might have a bulletin board where events may be posted.



48th ANNUAL SHOW!

Another key area is publicity

2. Carving Magazines -

Information is sent in the fall to carving magazines for their Event Calendars.

Chip Chats - Info sent to: nwca@chipchats.org

Woodcarving Illustrated - editors@woodcarvingillustrated.com

Wildfowl Carving Magazine - mallison@amprycp.com

3. Carving Clubs - Wisconsin area including: Blackhawk Carving Club, Capital Area Carvers of Wisconsin, Iola Chippers & Sippers, Kettle Karvers Klub, NEWWG, Rock River Valley Carving Club, Waupaca Area Carvers, Wausau Area Carvers, West Wisconsin Woodcarver's Guild, Wisconsin River Woodcarvers.

4. The Oshkosh Convention Center Electronic Signboard - The Convention Center the week before the show will advertise our show on at no extra charge. They will need a reminder and ad copy.

5. Press Release - The Oshkosh Visitor Center at no charge will send out a **press release** to radio & television stations, and newspapers advertising our show. Oshkosh is Event City and the Visitor Center does this as part of their mission to publicize Oshkosh venue events. They have a press release questionnaire and will need to receive particulars of the event about one month before the show. In 2023, they provided us with welcome bags and sharpies for our exhibitors and vendors.

6. Newspaper Advertisements - In 2023 we had paid ads in several local weekly newspapers: The Oshkosh Herald, The Neenah News, and the Berlin Journal Newspapers publications of The Billboard, and the Feature Section that goes out with the Berlin Journal, Omro Herald, Green Lake Reporter, Princeton-Times Republic, and Markesan Regional Reporter.

7. Newspaper Articles - In 2023 we provided article copy & photographs on thumb drives to the newspapers that we advertised with for their use. With their edits and choice of photographs, articles appeared in all papers.

8. Yard signs - Yard signs are stored in the trailer. They are updated with adhesive stickers to show the date of the current show. Yard signs are distributed at the March or April club meeting before the show.

9. Other - Radio, Billboards, other possibilities exist. Assistance is needed for any or all of the above categories. What strikes your fancy?



CALLING ALL CARVERS!

THE FRIENDSHIP CANE'S THEME FOR OUR 2024 SHOW IS WISCONSIN WILDFLOWERS & MUSHROOMS!

PICK UP A BLOCK TO CARVE OR WOODBURN AT SATURDAY'S MEETING.
RELIEF CARVING AND WOODBURNING WILL WORK WELL WITH THIS THEME!

ARE YOU UP TO THE CHALLENGE?

IF NOT, MAKE ANY DESIGN FOR OUR POTPOURI FRIENDSHIP CANE.

The Wisconsin State Flower is the Wood Violet, but there are lots of wildflowers native to the Badger State:

- Woodland Phlox
 - Pale Purple Cone Flowers
 - Black Eyed Susans
 - Compass Plant
 - Prairie Smoke
 - Prairie Spiderwort
 - Royal CatchFly
 - Bloodroot & more
- See e.g. wildlifeinformer.com/wildflowers-in-wisconsin
or www.uswildflowers.com



Five States have a State mushroom. Alas, there is no State Mushroom for Wisconsin! However, Wisconsin is home to many fungi, from the delicious Morel at left to the ominous Destroying Angel below!! Other common 'rooms in Wisconsin: Artist's Conk, Crown-tipped coral, puffball, Chicken of the Woods, Chanterelle, Aspen Oyster & more!



Want to peruse Fungi Photos for ideas? Try these websites:
argobuilder.com

wisconsinmycologicalsociety.org

wisconsinmushrooms.com

www.pbases.com

The Oshkosh Senior Center Woodshop Open House is Thursday, January 25, 2024 9 o'clock to Noon



Therapy Through Whittling

Annette Aubinger will speak on "Wood Carving - a Life Altering Therapy" at the January 17th Northeastern Wood Workers Guild (NEWWG) meeting.

Place: Northeast WI Technical College (NWTC) 2740 W Mason St., Green Bay, WI .

Meeting starts at 7 p.m. Prospective members are welcome to attend a meeting, and meet fellow woodworkers. Annette Aubinger is President of the Ashwaubenon Historical Society and an experienced teacher.

For more information email: info@newwg.org or visit their website at www.newwg.org

Late Addition: Linda Gomach is leading an **unfinished projects woodburning class** on **Tuesdays at OSC, 8-11 am; January 9-30.** \$30 Resident/ \$35 Nonresident

Woodcarving & Woodburning Classes

Carving & Pyrography Classes held at the Oshkosh Senior Center (OSC)

200 North Campbell Road, Oshkosh, WI tel: (920) 232-5311

Woodburning in the South Building; Carving in the North Building Woodshop.

Gene Bengel - Project Wood Carving



Refresh skills and work on projects alongside fellow carvers.

This class is open to wood carvers using either power or hand tools.

Power tool carvers must bring a bench fan dust collector.

Only carvers with current machine safety training may use designated OSC shop power equipment.

Carvers without current machine training may carve using handtools and their own hand rotary tools (e.g. Dremels) using a bench pass available from Gene.

Gene is available to instruct, guide, and problem solve to help you with projects.

Mondays, 8:00 a.m. to Noon, January 8-29 (4 days; 16 hours total.)

Class size: minimum of 3 / maximum of 14.

Cost: \$40 for Oshkosh residents and \$45 for non-residents.

Woodshop Guided Hours

Wednesdays from 10 am - 2:30 pm

Woodshop time for you to use machines to work on your own projects.

Experienced volunteer woodworkers supply support as needed.

Cost \$5 (Oshkosh Resident / \$6.50 (Nonresident)

Prerequisite: Machine Safety Training. If you plan an afternoon arrival please call ahead to advise.



Coming in February: a Tuesday Portrait Woodburning Class & a Thursday Indian Art Pyrography Class at OSC.

Woodcarving & Woodburning Classes

Carving & Pyrography Classes held at the Oshkosh Senior Center (OSC)

200 North Campbell Road, Oshkosh, WI tel: (920) 232-5311

Woodburning in the South Building; Carving in the North Building Woodshop.

Don Schettl & Gene Bengel - Bird Carving Monday Afternoons January 8 - March 25, 2024 Lifesize Robin Woodcarving Class



A great class for intermediate to advanced carvers to continue their wood carving journey.

The instructors will teach techniques and methods to carve the state bird of Wisconsin, a full size Robin. Students will carve from a basswood cutout provided by the instructors.

Award winning instructors will help you with step by step instructions to complete your project. Power carvers will require the use of a dust collector/bench fan.

This class is filling up fast, so don't delay if you want to sign up.

Painting & habitat classes will be scheduled and offered at a later dates.

Mondays, 12:30 p.m. to 3:00 p.m., January 8 - March 25

(12 day class; 30 hours total)

Class size: Minimum 3 - Maximum 10.

Cost \$55 for Oshkosh residents and \$60 for non-residents. Bird cutout & eyes included.

Registration is open!

Class is Full!!

Basic Machine Safety Training (Woodshop) - Jeff Becker

Any NEW participants wanting to use the OSC woodshop machines for classes or "Guided Hours" are required to attend machine safety training class. Both days are required. Training materials will be provided. Upon completion of this class participants may use designated machines in the woodshop. Training is good for one year from date of training.

Fridays. January 19 & 26 10 am - Noon

Register by Friday, January 12, 2024

Cost: \$5 Oshkosh Resident / \$7.50 (nonresident)

Online Woodcarving Lessons (that don't cost an arm & a leg)



The Woodcarving Academy offers:

- (1) online video courses by subscription for many different types of carving from a roster of carvers; and
- (2) separate online live classes for a per course fee. The live classes are not included in the subscription. See woodcarvingacademy.com

Subscription Offerings- Recorded video instruction from two dozen instructors:

Free membership Plan

Access to the sample videos

Paid Membership Plans

Full unlimited access to all the videos during the subscription period.

Monthly

\$19.95 Recurring

Quarterly

\$49.95 Recurring

Yearly

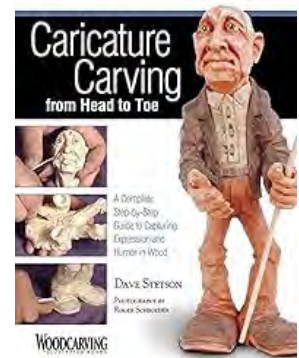
\$139.95 Recurring (Save \$100)

The subscription plan teachers include:

Caricature Carvers:

Dave Stetson (CCA*, 16 videos);
Floyd Rhadigan (CCA, 4 Videos);
Ryan Olsen (CCA, 7 Videos);
Mark Akers (3 Videos);
Rich Wetherbee (CCA, 3 Videos);
Dwyane Gosnell (CCA, 14 Videos);
Tom Wolfe (CCA, 5 Videos).

Kevin Applegate (CCA, 9 Videos);
Pat Moore (8 Videos);
Dale Green (CCA, 6 Videos);
James Miller (5 Videos);
Bob Hershey (CCA, 8 Videos);
Mitch Cartledge (CCA, 2 Videos);



* Caricature Carvers of America Member

Realistic Carvers:

Stu Martin (4 videos);
Janet Cordell (10 Videos);
Maddy Kloeber (2 Videos);

Jim Redhawk (8 Videos);
Dylan Goodson (3 Videos);
Donna Menke (3 Videos)

Relief Carvers:

Dylan Goodson (5 Videos);
Randy Stoner (2 Videos)

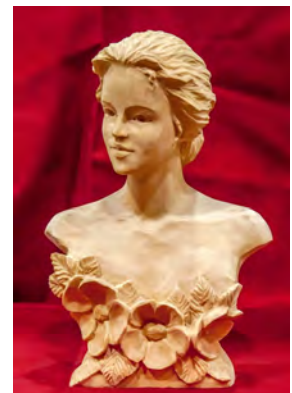
Fred & Elaine Stenman (3 Videos);

Chip Carver:

Carolyn Halbrook (8 Videos)

Wood Spirits and Walking Sticks:

Mark Gargac (5 Videos)



Online Woodcarving Lessons (that don't cost an arm & a leg)



Free Membership - 6+ hours Beginner Lessons plus Guides on tools, sharpening & suppliers

Paid Membership - Full unlimited access to All Lessons plus downloadable templates and livestream every two weeks

Monthly - \$14.99 recurring

Full Year - \$159.99 nonrecurring (10% discount) plus can renew at \$129.99

Mary May is author of the book "Carving the Acanthus Leaf."

For more info and sample lesson:
<https://www.marymaycarving.com/carvingschool/>

Welcome to the wonderful world of woodcarving!
Join me, Mary May, and learn the art of traditional woodcarving through online instructional videos.
We currently offer **288** full-length basic, intermediate, and advanced lessons (currently **611** individual episodes), with a new, HD episode added every week!
Read more about my [woodcarving journey](#).



If you want to carve like Grinling Gibbons learn from this guy!

Alexander Grabovetskiy On Line Courses \$22.95 per month Full access to all video courses
\$229.99 For full year Full access 3000 video segments

Key Points:

- Classical design development for carving—the ancient art of design
- How to think in 3D before you carve—the art of composition
- How to properly use wood carving tools for safety and efficiency
- How to work with wood grain issues
- How to carve a classical design applicable to any type of woodcarving (furniture, ornamental, architectural)
- How to sharpen wood carving tools fast and efficiently
- Tips and tricks on how to get the most out of your carvings

Named International Woodcarver of the Year by the UK's Woodcarving Magazine.

For on line courses go to: <https://schoolofwoodcarving.com>



*Places to Go Carving: Appleton, Berlin, Fond du Lac ,
Scandinavia, Oshkosh, Green Bay, Princeton, Waupaca, Wausau*

Thompson Center on Lourdes (TCoL), at St. Bernadette Center, 2331 E. Lourdes Drive, **Appleton**, WI
Room 209 at South Building (St. Bernadette School), (door by elevator).
Fridays, 9:00 a.m. to noon - Cost: \$2 daily fee. All ages.
New carvers are welcome! You must register ahead of time(920) 939-3088.
See www.thetcol.org for details.

Berlin Senior Center, 142 Water St., **Berlin**, WI 54923 (920) 361-5422
Wednesdays, 9:00 a.m. to Noon - Cost: Free.
We typically have about 12 people wood carving.

Fond du Lac Senior Center Woodcarving Club, 151 East 1st Street, Fond du Lac, WI 54935
tel: (920)322-3630, Mondays, 9:00 a.m. - 11:30 a.m.
Yearly membership (age 50+) is \$10. New members always welcome.
Call to register (920) 322-3630.

ADRC Woodcarvers Group (Aging & Disability Resource Center of Brown County)
300 S. Adams Street, **Green Bay**, Wisconsin, Tuesdays, 8:30 a.m. to 10:30 a.m. - Cost \$2/day
Bring hand tools (no power allowed), wood & project e.g. caricature, chip carving, bark, fish, animals,
holiday, etc. No classes, but experienced carvers will help re: tools, sharpening, painting, etc.

Iola Chippers & Sippers, Scandihaus Coffee Shop, 280 N. Main St., **Scandinavia**, WI
Tuesdays, Noon - 3:00 p.m.
No Fee. Informal group. All skill levels. New carvers welcome.

Oshkosh Seniors Center (OSC), North Building Woodshop, tel: (920) 232-5311
200 North Campbell Road, **Oshkosh**, Wisconsin
Woodshop safety training required for machine use in woodshop. (See Current newsletter).
Woodshop has Guided Hours to work on projects in woodshop on Wednesdays.
Classes offered in both North(Woodshop) and South Bldgs. See Newsletter.

Princeton Carvers, American Legion, 853 W. Main Street, **Princeton**, WI
Tuesdays, 8-11 a.m. - Cost: \$2 daily donation to the Legion.
An informal group of 4-6 people meet Tuesdays to carve and woodburn. New carvers welcome.

Waupaca Senior Center , 407 School Street, **Waupaca**, WI (715) 258-4437
Wednesdays 8:00 a.m. to 1:00 p.m. Enter at School Street entrance.
Yearly membership (age 55+) is \$15 -\$20 depending on residence. Waupaca
Woodcarving Club plus Senior Center carvers, typically 20-25 people meet.
New carvers welcome.

Wausau Area Carvers, Forest Park Village, 2901 N. 7th St., Wausau, WI
(South side of Building, Ground Level; door is marked "Legacy Woodworking Academy")
Tuesdays 10 a.m. to 1 p.m.; Thursdays 5:30 - 8:30 p.m.
Contact Cheryl Ruplinger at cherriruplinger@gmail.com

Woodcarving Annual Show Calendar

2024 Southwest Florida Wood Art Exposition & Competition

Charlotte Harbor Event & Conference Center, 75 Taylor Street, Punta Gorda, Florida

January 12-13, 2024

2 Day woodcarving & woodturning show & competition, tool & wood vendors.

For details & entry forms see: <https://swflwoodartexpo.org>

38th Annual Rio Grande Woodcarvers Show 2024

Nomad Shrine Club, 1044 W. Nolana Loop, Pharr, TX 78577

January 19-20, 2024

2 Day woodcarving show & competition, tool & wood vendors.

For details & entry forms see: <https://www.rgvwoodcarvers.org/rgv-woodcarving-show/>

The Woodworking Show Milwaukee (Trade Show)

[More information to come]

February 16-18, 2024 12-6 (Fri) 10-6 (Sat) 10-3 (Sun) Admission \$?? (for all 3 days)

Under 15 free Open to Public. About 50 vendors. Typical attendance ~7,000.

International Woodworking Trade Exhibition for veneers, carving tools and machinery, dovetail jigs, shop safety, dust collection, measuring devices, anything related to woodworking or DIY. Tools, adhesives, exotic woods, stationary machinery, dowels, legs, shop equipment, time savers, measuring devices, finishing tools and products, cabinet tools and hardware, turning tools and supplies, etc.

<http://www.thewoodworkingshows.com/buy-tickets.html>

The 31st Kettle Karvers Klub Artistry in Wood Woodcarving and Wood Sculpture Show

April TBD, 2024, 10:00 am to 4:00 pm.

Emil Mazey Hall, **Plymouth, WI**

Demonstrations, Judged Competition, Vendors, Food

www.kettlekarvers.org

Oshkosh Bird Fest

Saturday, May 4, 2024 at TBD

For more event information check the Bird Fest website: <http://www.oshkoshbirdfest.com>

The 48th Annual Mid-Wisconsin Chippers Woodcarving Show, Competition & Sale

"The Oldest Annual Woodcarving Show in the State of Wisconsin"

Sunday, May 5, 2024, 9:00 am to 4:00 pm. Admission: \$5 Age 12 & under free

The Oshkosh Convention Center, 2 North Main St., **Oshkosh, WI**

between the Leach Amphitheater & the Best Western Premier Waterfront Hotel.

The 56th International Woodcarvers Congress sponsored by the Affiliated Wood Carvers

Jackson County Fairgrounds, Maquoketa, Iowa

June 8-15, 2024 Instructors will be: John Engler, Ryan Olsen, Randy Hansen, Vic Hood, Roger Nadrchal, Carol Leavy, Bruce Shostak, Jan Jenson, Jeff Phares, and Alex Grabovetskiy.

Competitions, Seminars, Show Judges will be: Ryan Olsen, Roger Nadrchal, and Greg Wirtz

For membership & more information: www.woodcarverscongress.org